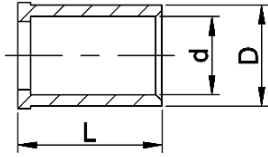


# INDUSTRIAL HOSES - air-conditioning

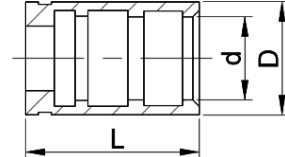
## Fittings for ZC-FR5-02 (1/12") and ZC-FR5-04 (5/32") hoses

Ferrule for 1/12" hose (aluminium)



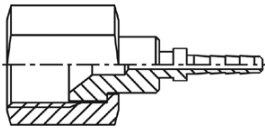
code	L [mm]	d [mm]	D [mm]
ZC-FR-015	11.5	6.2	8

Ferrule for 5/32" hose (aluminium)



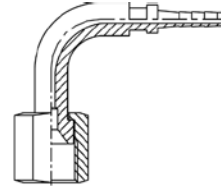
code	L [mm]	d [mm]	D [mm]
ZC-FR-025	18	8.6	11.2

UNF female thread, SAE type, 45° cone, (1/12 - brass, 5/32 - steel)



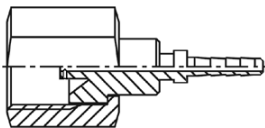
code	thread [inch]	hose I.D. [inch]
ZC-FR101-04-015	7/16-20 UNF (1/4 SAE)	1/12
ZC-FR101-04-025	7/16-20 UNF (1/4 SAE)	5/32
ZC-FR101-06-025	5/8-18 UNF (3/8 SAE)	5/32

UNF female thread, SAE type, 45° cone, (1/12 - brass, 5/32 - steel)



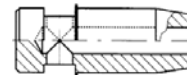
code	thread [inch]	hose I.D. [inch]
ZC-FR102-04-015	7/16-20 UNF (1/4 SAE)	1/12
ZC-FR102-04-025	7/16-20 UNF (1/4 SAE)	5/32
ZC-FR102-06-025	5/8-18 UNF (3/8 SAE)	5/32

UNF fem. thread, SAE type, 45° cone, with throttle (brass)



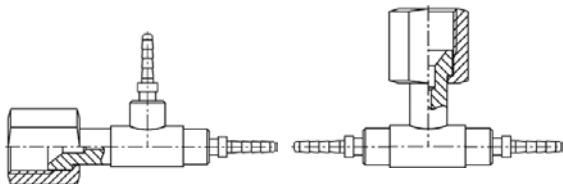
code	thread [inch]	hose I.D. [inch]
ZC-FR103-04-015	7/16-20 UNF (1/4 SAE)	1/12

Throttle for FR103 type fitting (brass)



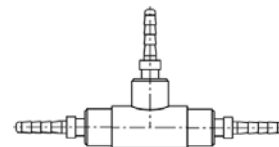
code	thread [inch]
ZC-FR103-D	7/16-20 UNF (1/4 SAE)

Tee-adaptor, UNF female thread, SAE type, 45° cone, (brass)



code	thread [inch]	hose I.D. [inch]
ZC-FR105-015	7/16-20 UNF (1/4 SAE)	1/12
ZC-FR106-015	7/16-20 UNF (1/4 SAE)	1/12

Tee-connector (brass)



code	hose I.D. [inch]
ZC-FR104-015	1/12