

Heat-resistant hoses



GRIPFLEX 1100

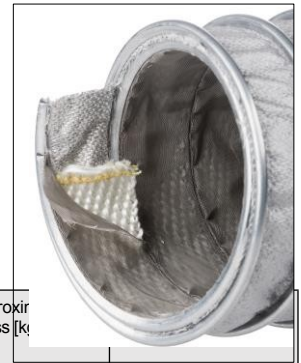
Suction hose for extraction of gases, fumes, vapours and air at very high temperatures of up to 1100°C

Hose material: 3 layers: externally impregnated glass fabric with stainless steel fibres (grey), middle layer - high-temperature insulation fabric, inside fine mesh - stainless steel

Reinforcement: type CLIP - outer wire spiral and stainless steel sheets, left-handed

Operating temp: -50°C to +1100°C

A three-layered suction hose of specific construction designed for the extra hot (up to 1100°C) discharge of gases, vapours, fumes and air. The outer layer of impregnated glass fabric with stainless steel threads provides mechanical strength, the middle thick high-temperature fabric acts as insulation, the inner very fine stainless steel mesh separates the flow of hot gases. Flame-retardant, to some extent resistant to hot sparks. Used on furnaces and engines for extraction of very high-temperature gases, in metallurgy, ceramics, shipbuilding, aerospace, automotive and military equipment. Hose of robust construction and resistance to injury due to the external spiral. Used exclusively as a vacuum suction hose due to the possibility of gas permeation to the outside at positive pressure (outgassing). Hoses with small inside diameters < 100 mm are characterised by the so-called two-hose construction (the mesh inner layer is a separate hose with spiral). The hose is fitted to the couplings with bridge ties (left-handed).



index	internal diameter [mm]	working pressure 23°C [bar]	vacuum 23°C [bar]	bend radius [mm]	approx. mass [kg]	
TS-GRIP1100-075	75	do not use for hypertension	0,31	150	1,6	2 ÷ 10
TS-GRIP1100-080	80		0,28	160	1,8	2 ÷ 10
TS-GRIP1100-090	90		0,25	180	1,8	2 ÷ 10
TS-GRIP1100-100	100		0,2	60	1,2	2 ÷ 10
TS-GRIP1100-110	110		0,17	66	1,3	2 ÷ 10
TS-GRIP1100-120	120		0,14	72	1,3	2 ÷ 10
TS-GRIP1100-125	125		0,13	75	1,5	2 ÷ 10
TS-GRIP1100-130	130		0,12	78	1,5	2 ÷ 10
TS-GRIP1100-140	140		0,11	84	1,5	2 ÷ 10
TS-GRIP1100-150	150		0,09	90	1,7	2 ÷ 10
TS-GRIP1100-160	160		0,08	96	1,7	2 ÷ 10
TS-GRIP1100-170	170		0,07	102	1,7	2 ÷ 10
TS-GRIP1100-175	175		0,07	105	2	2 ÷ 10
TS-GRIP1100-180	180		0,06	108	2	2 ÷ 10
TS-GRIP1100-200	200		0,05	120	2,2	2 ÷ 10
TS-GRIP1100-215	215		0,05	129	2,4	2 ÷ 10
TS-GRIP1100-225	225		0,04	135	2,7	2 ÷ 10
TS-GRIP1100-250	250		0,04	175	3	2 ÷ 10
TS-GRIP1100-275	275		0,03	193	3,5	2 ÷ 10
TS-GRIP1100-300	300		0,02	210	3,9	2 ÷ 10
TS-GRIP1100-315	315		0,02	221	4	2 ÷ 10
TS-GRIP1100-325	325		0,02	228	4,2	2 ÷ 10
TS-GRIP1100-350	350		0,018	245	4,6	2 ÷ 10
TS-GRIP1100-375	375		0,16	263	5,4	2 ÷ 10
TS-GRIP1100-400	400		0,014	280	5,8	2 ÷ 6
TS-GRIP1100-450	450	0,011	360	6,7	2 ÷ 6	
TS-GRIP1100-500	500	0,009	400	7,6	2 ÷ 6	
TS-GRIP1100-600	600	0,006	480	9,6	2 ÷ 3	
TS-GRIP1100-700	700	0,005	560	11,1	2 ÷ 3	
TS-GRIP1100-800	800	0,004	640	12,8	2 ÷ 3	
TS-GRIP1100-900	900	0,003	720	14,5	2 ÷ 3	