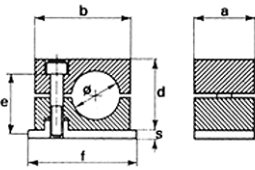


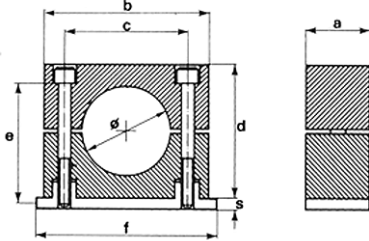
# INDUSTRIAL FITTINGS - clips, clamps, ferrules

100 type

0 group



1÷6 group



## DIN 3015 standard clamp

**Clamp material:** Green polypropylene (also: self-extinguishing polyamide, aluminium, rubber)

**Bolts material:** Galvanized steel

**Base material:** Carbon steel

Designed for quick, easy, durable and esthetic assembly of pipes, cables and hoses. Apart from standard metal parts, extended plates, rails and bolts for clamp sets are available as well. For proper selection of elements, contact Sales or Technical Department of TUBES INTERNATIONAL®.

code (polypropylene)	code (polyamide)	code (rubber)	code (aluminium)	group	pipe O.D. [mm]	dimensions														
						a	b	c	d	f	s	e								
TC-PP100-006	TC-PA100-006	-	-	0	6	30	28	-	27	32	3	M6 x 20								
TC-PP100-008	TC-PA100-008	-	-		8															
TC-PP100-010	TC-PA100-010	-	-		10															
TC-PP100-012	TC-PA100-012	-	-		12															
TC-PP100-106	TC-PA100-106	TC-RB100-106	TC-AL100-106	1	6	30	34	20	27	42	3	M6 x 20								
TC-PP100-106.4	TC-PA100-106.4	TC-RB100-106.4	-		6.4															
TC-PP100-108	TC-PA100-108	TC-RB100-108	TC-AL100-108		8															
TC-PP100-109.5	TC-PA100-109.5	TC-RB100-109.5	-		9.5															
TC-PP100-110	TC-PA100-110	TC-RB100-110	TC-AL100-110		10															
TC-PP100-112	TC-PA100-112	TC-RB100-112	TC-AL100-112		12															
TC-PP100-212.7	TC-PA100-212.7	TC-RB100-212.7	-	2	12.7	30	40	26	33	48	3	M6 x 25								
TC-PP100-213.5	TC-PA100-213.5	TC-RB100-213.5	-		13.5															
TC-PP100-214	TC-PA100-214	TC-RB100-214	TC-AL100-214		14															
TC-PP100-215	TC-PA100-215	TC-RB100-215	TC-AL100-215		15															
TC-PP100-216	TC-PA100-216	TC-RB100-216	TC-AL100-216		16															
TC-PP100-217.2	TC-PA100-217.2	TC-RB100-217.2	TC-AL100-217.2		17.2															
TC-PP100-218	TC-PA100-218	TC-RB100-218	TC-AL100-218		18															
TC-PP100-219	TC-PA100-219	TC-RB100-219	-		19															
TC-PP100-319	TC-PA100-319	TC-RB100-319	TC-AL100-319		3								19	30	48	33	35	55	3	M6 x 30
TC-PP100-320	TC-PA100-320	TC-RB100-320	TC-AL100-320										20							
TC-PP100-321.3	TC-PA100-321.3	TC-RB100-321.3	TC-AL100-321.3	21.3																
TC-PP100-322	TC-PA100-322	TC-RB100-322	TC-AL100-322	22																
TC-PP100-325	TC-PA100-325	TC-RB100-325	TC-AL100-325	25																
TC-PP100-325.4	TC-PA100-325.4	TC-RB100-325.4	-	25.4																
TC-PP100-426.9	TC-PA100-426.9	TC-RB100-426.9	TC-AL100-426.9	4	26.9	30	57	40	42	62	3	M6 x 35								
TC-PP100-428	TC-PA100-428	TC-RB100-428	TC-AL100-428		28															
TC-PP100-430	TC-PA100-430	TC-RB100-430	TC-AL100-430		30															
TC-PP100-432	TC-PA100-432	TC-RB100-432	TC-AL100-432		32															
TC-PP100-532	TC-PA100-532	TC-RB100-532	TC-AL100-532	5	32	30	68	52	58	74	3	M6 x 50								
TC-PP100-533.7	TC-PA100-533.7	TC-RB100-533.7	TC-AL100-533.7		33.7															
TC-PP100-535	TC-PA100-535	TC-RB100-535	TC-AL100-535		35															
TC-PP100-538	TC-PA100-538	TC-RB100-538	TC-AL100-538		38															
TC-PP100-540	TC-PA100-540	TC-RB100-540	TC-AL100-540		40															
TC-PP100-542	TC-PA100-542	TC-RB100-542	TC-AL100-542		42															
TC-PP100-542.4	TC-PA100-542.4	TC-RB100-542.4	-		42.4															
TC-PP100-545	TC-PA100-545	TC-RB100-545	TC-AL100-545		45															
TC-PP100-644.5	TC-PA100-644.5	TC-RB100-644.5	TC-AL100-644.5	6	44.5	30	86	66	66	88	3	M6 x 60								
TC-PP100-648.3	TC-PA100-648.3	TC-RB100-648.3	TC-AL100-648.3		48.3															
TC-PP100-650.8	TC-PA100-650.8	TC-RB100-650.8	TC-AL100-650.8		50.8															