

INDUSTRIAL FITTINGS - valves

Ball valves

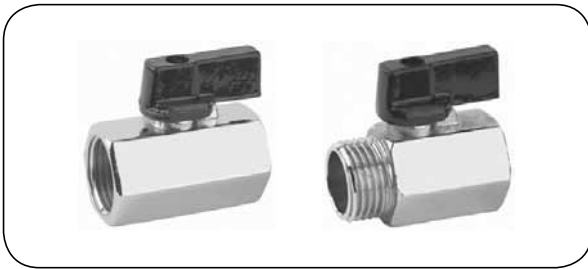


Mini ball valve 6400/6410 type

Body material: Nickel-plated brass
Ball material: Chrome-plated brass
Handle material: Polyamide (PA 66)
Ball seal: PTFE
Stem seal: NBR
Working temp.: From -20°C up to +80°C

A general purpose mini ball valve designed for industrial installations. Used for air, gases, water, chemicals, petrochemical products, etc. Vacuum 0.9 bar.

code	flow diameter [mm]	length [mm]	thread size [inch]	working pressure [bar]
6400 type (2 x BSP female thread)				
AI-6400-02	5.5	35	1/8	20
AI-6400-04	5.5	37	1/4	20
AI-6400-06	8	42	3/8	20
AI-6400-08	10	49	1/2	20
AI-6400-12	14	58	3/4	20
6410 type (BSP male / female thread)				
AI-6410-02	5.5	34	1/8	20
AI-6410-04	5.5	35	1/4	20
AI-6410-06	8	39	3/8	20
AI-6410-08	10	45	1/2	20
AI-6410-12	14	52	3/4	20



Mini ball valve 4010/4011 type

Body material: Nickel-plated brass
Ball material: Chrome-plated brass
Handle material: Aluminium
Ball seal: PTFE
Stem seal: NBR
Working temp.: From -10°C up to +90°C

A general purpose mini ball valve designed for industrial installations. Used for air, gases, water, chemicals, petrochemical products, etc.

code	flow diameter [mm]	length [mm]	thread size [inch]	working pressure [bar]
4010 type (2 x BSP female thread)				
RV-4010-06	8	40	1/4	10
RV-4010-10	8	40	3/8	10
RV-4010-13	10	44	1/2	10
RV-4010-19	14	48	3/4	10
4011 type (BSP male / female thread)				
RV-4011-06	8	39	1/4	10
RV-4011-10	8	39	3/8	10
RV-4011-13	10	43	1/2	10
RV-4011-19	14	50	3/4	10