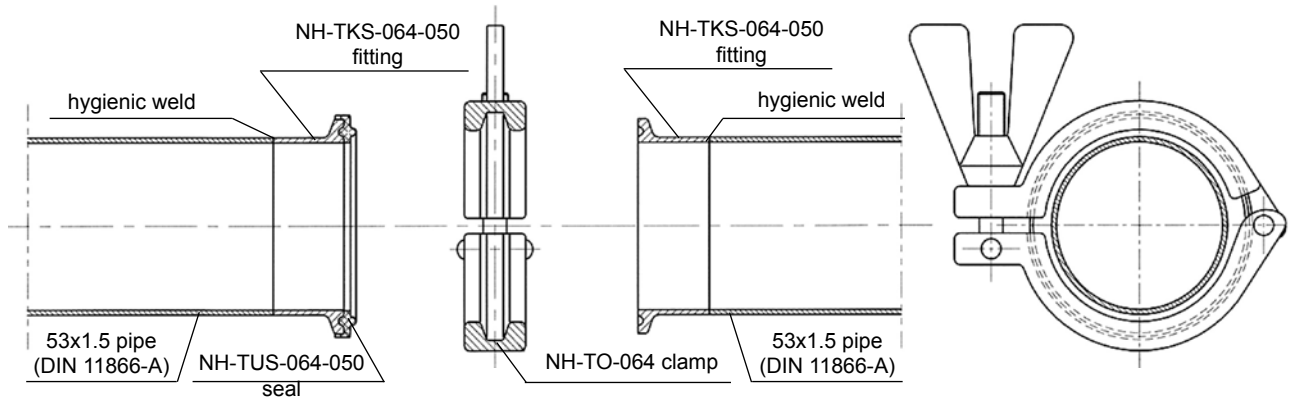


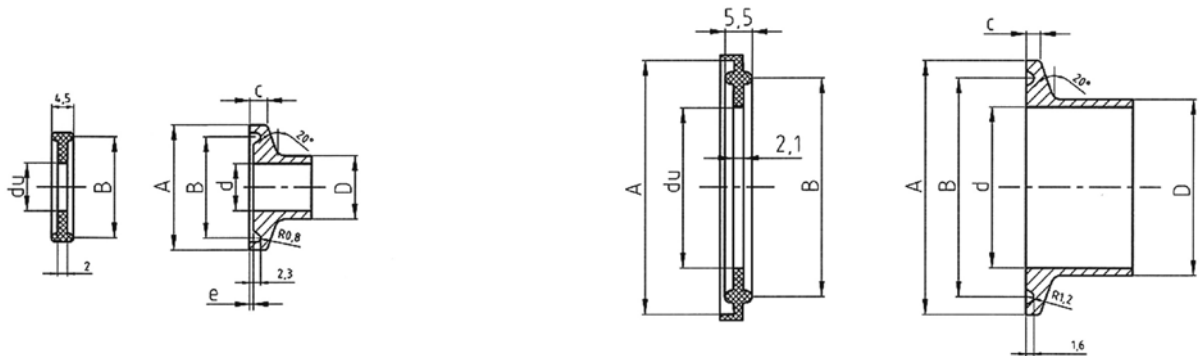
INDUSTRIAL FITTINGS - couplings

Stainless steel hygienic couplings

TRICLOVER (Tri-Clamp) couplings



TRICLOVER couplings consist of two flanges („plates”) with grooves to accommodate a seal, secured by a clamp. The seal fills up the crevice between two flanges so that it ensures high hygiene of the coupling. Used in pharmaceutical, food, cosmetic and chemical industries, in biotechnology, for fluids and high viscosity media. TRICLOVER couplings are manufactured in compliance with such standards as: ISO 2852, DIN 32676, BS 4825-3 and other, which generally define the same basic dimensions of connection (see table). It is typical of TRICLOVER couplings that the diameter of the flange (A) and the internal diameter (d) correspond to the internal diameter of the pipes in the installation. The working pressure of the coupling itself depends on the size of the coupling and type of the clamp applied (at least 16 bar up to 2”, 10 bar - above 2”).



standard				ISO 2852		DIN32676 - A		ISO 1127 DIN 32676 - B		ASME BPE DIN32676 - C		BS 4825-3		size [inch]		
pipe standard				ISO 2037		DIN 11866 - A DIN 11850		ISO 1127 DIN 11866 - B		ASME BPE DIN 11866 - C		BS 4825-1				
A	B	c	e	D	d	D	d	D	d	D	d	D	d			
25 (25.4*)	20.2 (20.3*)	3.6 (3.7*)	0.8 (0*)			6**	4**			6.35	4.57			1/4		
						8	6									
						10	8	10.2	7	9.53	7.75					3/8
						12	10	13.5	10.3	12.7	9.4	12.7	9.5			1/2
						14**	12**									
		16**	14**													
		18**	16**	17.2	14	19.05	15.75	19.05	15.85					3/4		
34	27.5	2.85	0	12	10											
				12.7	10.7	13	10									
				17.2	15.2	19	16									
				21.3	19.3	23	20									
50.5	43.5	2.85	0					21.3	18.1							
				25	22.6	29	26	26.9	23.7	25.4	22.1	25.4	22.2	1		
				33.7	31.3	35	32	33.7	29.7							
64	56.5	2.85	0	38	35.6	41	38			38.1	34.8	38.1	34.9	1.1/2		
				40	37.6			42.4	38.4							
51	48.6	53	50	48.3	44.3	50.8	47.5	50.8	47.6	50.8	47.6	2				
77.5	70.5	2.85		63.5	60.3			60.3	56.3	63.5	60.2	63.5	60.3	2.1/2		

Note: * - according to BS 4825-3; ** - utilized, but not listed in a standard.