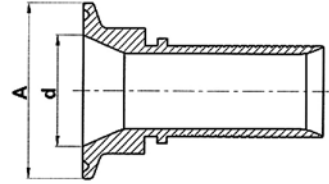
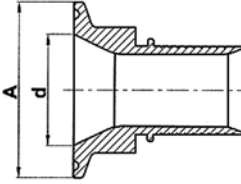
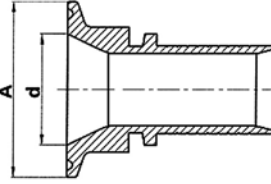
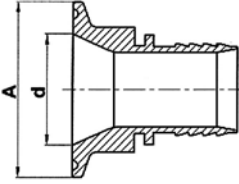


INDUSTRIAL FITTINGS - couplings

Stainless steel hygienic couplings

AISI 316 steel, Ra (inside) 0.4 µm



NH-TCK

NH-TCR

AF-PHXTC

AF-FXXTC

A	d	comply with fittings according standards below: DIN: DIN 32676 BS: BS-4825-3 ISO: ISO 2852	hose DN		NH-TCK	NH-TCR	AF-PHXTC	AF-FXXTC
			[inch]	[mm]	hose type			
					rubber hoses	rubber hoses, plastic hoses, rubber hoses with internal layer made of UPE, PTFE, FEP, MFA, PFA	PTFE hoses PHARMALINE, PHARMALEX, CORROFLON, BIOFLEX	PTFE hoses HYPERLINE FX, HYPERLINE SB, thermoplastic hoses, rubber hoses
					assembled with			
					TI-LD, TI-LDR ferrules	TI-LR, TI-LDR ferrules or RS safety clamps	ferrules for above mentioned hoses	AF-THU ferrules for PTFE hoses, TI-L ferrules for rubber hoses, ferrules for thermoplastic hoses.
[mm]	[mm]	-	[inch]	[mm]	code	code	code	code
50.5	9.4	BS / DIN-C	1/2"	13	NH-TCK-050-09-013	NH-TCR-050-09-013	AF-PHXTC-050-09-013	AF-FXXTC-050-09-013
50.5	15.75	BS / DIN-C	3/4"	19	NH-TCK-050-15-019	NH-TCR-050-15-019	AF-PHXTC-050-15-019	AF-FXXTC-050-15-019
50.5	18.1	DIN-B	3/4"	19	NH-TCK-050-18-019	NH-TCR-050-18-019	AF-PHXTC-050-18-019	AF-FXXTC-050-18-019
50.5	22.1	BS / DIN-C	1/2"	13	NH-TCK-050-22-013	NH-TCR-050-22-013	AF-PHXTC-050-22-013	AF-FXXTC-050-22-013
50.5	22.1	BS / DIN-C	5/8"	16	NH-TCK-050-22-016	-	AF-PHXTC-050-22-016	AF-FXXTC-050-22-016
50.5	22.1	BS / DIN-C	3/4"	19	NH-TCK-050-22-019	NH-TCR-050-22-019	AF-PHXTC-050-22-019	AF-FXXTC-050-22-019
50.5	22.1	BS / DIN-C	1"	25	NH-TCK-050-22-025	NH-TCR-050-22-025	AF-PHXTC-050-22-025	AF-FXXTC-050-22-025
50.5	22.6	ISO	1"	25	NH-TCK-050-23-025	NH-TCR-050-23-025	AF-PHXTC-050-23-025	AF-FXXTC-050-23-025
50.5	23.7	DIN-B	3/4"	19	NH-TCK-050-24-019	NH-TCR-050-24-019	AF-PHXTC-050-24-019	AF-FXXTC-050-24-019
50.5	23.7	DIN-B	1"	25	NH-TCK-050-24-025	NH-TCR-050-24-025	AF-PHXTC-050-24-025	AF-FXXTC-050-24-025
50.5	26	DIN-A	5/8"	16	NH-TCK-050-26-016	-	AF-PHXTC-050-26-016	AF-FXXTC-050-26-016
50.5	26	DIN-A	3/4"	19	NH-TCK-050-26-019	NH-TCR-050-26-019	AF-PHXTC-050-26-019	AF-FXXTC-050-26-019
50.5	26	DIN-A	1"	25	NH-TCK-050-26-025	NH-TCR-050-26-025	AF-PHXTC-050-26-025	AF-FXXTC-050-26-025
50.5	29.7	DIN-B	3/4"	19	NH-TCK-050-30-019	NH-TCR-050-30-019	AF-PHXTC-050-30-019	AF-FXXTC-050-30-019
50.5	29.7	DIN-B	1"	25	NH-TCK-050-30-025	NH-TCR-050-30-025	AF-PHXTC-050-30-025	AF-FXXTC-050-30-025
50.5	29.7	DIN-B	1.1/4"	32	NH-TCK-050-30-032	NH-TCR-050-30-032	AF-PHXTC-050-30-032	-
50.5	31.3	ISO	1"	25	NH-TCK-050-31-025	NH-TCR-050-31-025	AF-PHXTC-050-31-025	AF-FXXTC-050-31-025
50.5	31.3	ISO	1.1/4"	32	NH-TCK-050-31-032	NH-TCR-050-31-032	AF-PHXTC-050-31-032	-
50.5	32	DIN-A	3/4"	19	NH-TCK-050-32-019	NH-TCR-050-32-019	AF-PHXTC-050-32-019	AF-FXXTC-050-32-019
50.5	32	DIN-A	1"	25	NH-TCK-050-32-025	NH-TCR-050-32-025	AF-PHXTC-050-32-025	AF-FXXTC-050-32-025
50.5	32	DIN-A	1.1/4"	32	NH-TCK-050-32-032	NH-TCR-050-32-032	AF-PHXTC-050-32-032	-
50.5	34.8	BS / DIN-C	3/4"	19	NH-TCK-050-35-019	NH-TCR-050-35-019	AF-PHXTC-050-35-019	AF-FXXTC-050-35-019
50.5	34.8	BS / DIN-C	1"	25	NH-TCK-050-35-025	NH-TCR-050-35-025	AF-PHXTC-050-35-025	AF-FXXTC-050-35-025
50.5	34.8	BS / DIN-C	1.1/4"	32	NH-TCK-050-35-032	NH-TCR-050-35-032	AF-PHXTC-050-35-032	-
50.5	34.8	BS / DIN-C	1.1/2"	38	NH-TCK-050-35-038	NH-TCR-050-35-038	AF-PHXTC-050-35-038	-
50.5	34.8	BS / DIN-C	-	40		NH-TCR-050-35-040	-	-
50.5	35.6	ISO	1.1/2"	38	NH-TCK-050-36-038	NH-TCR-050-36-038	AF-PHXTC-050-36-038	-
50.5	38	DIN-A	3/4"	19	NH-TCK-050-38-019	NH-TCR-050-38-019	AF-PHXTC-050-38-019	AF-FXXTC-050-38-019
50.5	38	DIN-A	1"	25	NH-TCK-050-38-025	NH-TCR-050-38-025	AF-PHXTC-050-38-025	AF-FXXTC-050-38-025
50.5	38	DIN-A	1.1/4"	32	NH-TCK-050-38-032	NH-TCR-050-38-032	AF-PHXTC-050-38-032	-
50.5	38	DIN-A	1.1/2"	38	NH-TCK-050-38-038	NH-TCR-050-38-038	AF-PHXTC-050-38-038	-
50.5	38	DIN-A	-	40		NH-TCR-050-38-040	-	-
50.5	38.4	DIN-B	1.1/4"	32	NH-TCK-050-38B-032	NH-TCR-050-38B-032	AF-PHXTC-050-38B-032	-
50.5	38.4	DIN-B	1.1/2"	38	NH-TCK-050-38B-038	NH-TCR-050-38B-038	AF-PHXTC-050-38B-038	-