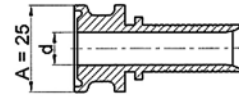
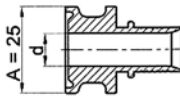
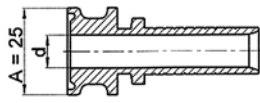
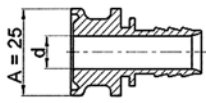
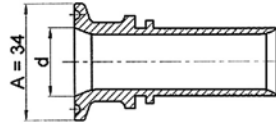
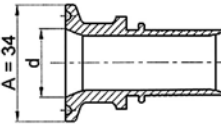
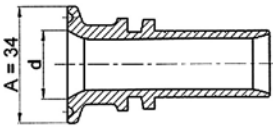
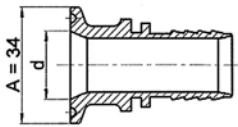


INDUSTRIAL FITTINGS - couplings

Stainless steel hygienic couplings



AISI 316 steel, Ra (inside) 0.4 µm



NH-TCK

NH-TCR

AF-PHXTC

AF-FXXTC

A	d	comply with fittings according standards below: DIN: DIN 32676 BS: BS-4825-3 ISO: ISO 2852	hose DN		NH-TCK	NH-TCR	AF-PHXTC	AF-FXXTC
					hose type			
					rubber hoses	rubber hoses, plastic hoses, rubber hoses with internal layer made of UPE, PTFE, FEP, MFA, PFA	PTFE hoses PHARMALINE, PHARMALEX, CORROFLON, BIOFLEX	PTFE hoses HYPERLINE FX, HYPERLINE SB, thermoplastic hoses, rubber hoses
assembled with				TI-LD, TI-LDR ferrules	TI-LR, TI-LDR ferrules or RS safety clamps	ferrules for above mentioned hoses	AF-THU ferrules for PTFE hoses, TI-L ferrules for rubber hoses, ferrules for thermoplastic hoses.	
[mm]	[mm]	-	[inch]	[mm]	code	code	code	code
25	4	DIN-A*	1/4"	6	-	-	AF-PHXTTC-025-04-006	AF-FXXTC-025-04-006
25	4.57	DIN-C	1/4"	6	-	-	AF-PHXTTC-025-05-006	AF-FXXTC-025-05-006
25	6	DIN-A	5/16"	8	-	-	-	AF-FXXTC-025-06-008
25	7	DIN-B	3/8"	10	-	-	AF-PHXTTC-025-07B-010	AF-FXXTC-025-07B-010
25	7.75	DIN-C	3/8"	10	-	-	AF-PHXTTC-025-07-010	AF-FXXTC-025-07-010
25	8	DIN-A	3/8"	10	-	-	AF-PHXTTC-025-08-010	AF-FXXTC-025-08-010
25	9.4	BS / DIN-C	1/4"	6	-	-	AF-PHXTTC-025-09-006	AF-FXXTC-025-09-006
25	9.4	BS / DIN-C	3/8"	10	-	-	AF-PHXTTC-025-09-010	AF-FXXTC-025-09-010
25	9.4	BS / DIN-C	1/2"	13	NH-TCK-025-09-013	NH-TCR-025-09-013	AF-PHXTTC-025-09-013	AF-FXXTC-025-09-013
25	10	DIN-A*	1/2"	13	NH-TCK-025-10-013	NH-TCR-025-10-013	AF-PHXTTC-025-10-013	AF-FXXTC-025-10-013
25	10.3	DIN-B	1/2"	13	NH-TCK-025-11-013	NH-TCR-025-11-013	AF-PHXTTC-025-11-013	AF-FXXTC-025-11-013
25	12	DIN-A*	1/2"	13	NH-TCK-025-12-013	NH-TCR-025-12-013	AF-PHXTTC-025-12-013	AF-FXXTC-025-12-013
25	14	DIN-A* / DIN-B	1/2"	13	NH-TCK-025-14-013	NH-TCR-025-14-013	AF-PHXTTC-025-14-013	AF-FXXTC-025-14-013
25	15.75	BS / DIN-C	1/2"	13	NH-TCK-025-15-013	NH-TCR-025-15-013	AF-PHXTTC-025-15-013	AF-FXXTC-025-15-013
25	15.75	BS / DIN-C	5/8"	16	-NH-TCK-025-15-016	-	AF-PHXTTC-025-15-016	AF-FXXTC-025-15-016
25	15.75	BS / DIN-C	3/4"	19	NH-TCK-025-15-019	NH-TCR-025-15-019	AF-PHXTTC-025-15-019	AF-FXXTC-025-15-019
25	16	DIN-A*	3/4"	19	NH-TCK-025-16-019	NH-TCR-025-16-019	AF-PHXTTC-025-16-019	AF-FXXTC-025-16-019
34	10	ISO / DIN-A	3/8"	10	-	-	AF-PHXTTC-034-10-010	AF-FXXTC-034-10-010
34	10	ISO / DIN-A	1/2"	13	NH-TCK-034-10-013	NH-TCR-034-10-013	AF-PHXTTC-034-10-013	AF-FXXTC-034-10-013
34	10.3	DIN-B	3/8"	10	-	-	AF-PHXTTC-034-10B-010	AF-FXXTC-034-10B-010
34	10.3	DIN-B	1/2"	13	NH-TCK-034-10B-013	NH-TCR-034-10B-013	AF-PHXTTC-034-10B-013	AF-FXXTC-034-10B-013
34	10.7	ISO	1/2"	13	NH-TCK-034-11-013	NH-TCR-034-11-013	AF-PHXTTC-034-11-013	AF-FXXTC-034-11-013
34	14	DIN-A*	1/2"	13	NH-TCK-034-14-013	NH-TCR-034-14-013	AF-PHXTTC-034-14-013	AF-FXXTC-034-14-013
34	14	DIN-A*	5/8"	16	NH-TCK-034-14-016	-	AF-PHXTTC-034-14-016	AF-FXXTC-034-14-016
34	15.2	ISO	5/8"	16	NH-TCK-034-15-016	-	AF-PHXTTC-034-15-016	AF-FXXTC-034-15-016
34	15.2	ISO	3/4"	19	NH-TCK-034-15-019	NH-TCR-034-15-019	AF-PHXTTC-034-15-019	AF-FXXTC-034-15-019
34	16	DIN-A	5/8"	16	NH-TCK-034-16-016	-	AF-PHXTTC-034-16-016	AF-FXXTC-034-16-016
34	16	DIN-A	3/4"	19	NH-TCK-034-16-019	NH-TCR-034-16-019	AF-PHXTTC-034-16-019	AF-FXXTC-034-16-019
34	18.1	DIN-B	5/8"	16	NH-TCK-034-18-016	-	AF-PHXTTC-034-18-016	AF-FXXTC-034-18-016
34	18.1	DIN-B	3/4"	19	NH-TCK-034-18-019	NH-TCR-034-18-019	AF-PHXTTC-034-18-019	AF-FXXTC-034-18-019
34	19.3	ISO	5/8"	16	NH-TCK-034-19-016	-	AF-PHXTTC-034-19-016	AF-FXXTC-034-19-016
34	19.3	ISO	3/4"	19	NH-TCK-034-19-019	NH-TCR-034-19-019	AF-PHXTTC-034-19-019	AF-FXXTC-034-19-019
34	20	DIN-A	5/8"	16	NH-TCK-034-20-016	-	AF-PHXTTC-034-20-016	AF-FXXTC-034-20-016
34	20	DIN-A	3/4"	19	NH-TCK-034-20-019	NH-TCR-034-20-019	AF-PHXTTC-034-20-019	AF-FXXTC-034-20-019