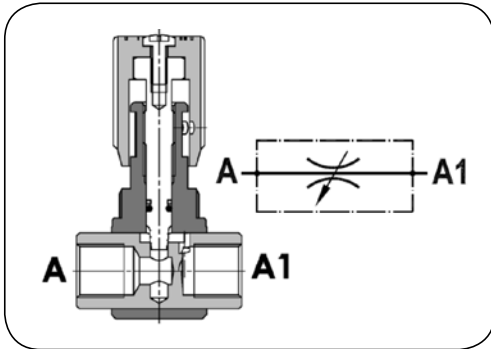


HIGH PRESSURE - valves

Throttle and safety valves



Throttle valve FPB

Material: Body - galvanized steel
Wheel - plastic

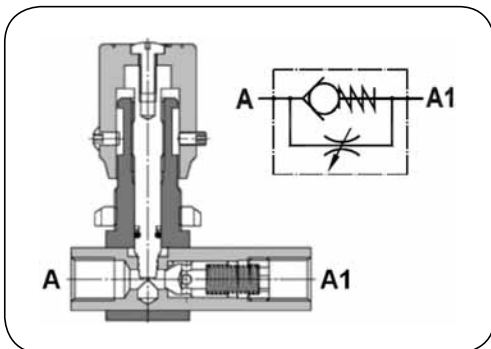
Seal: NBR

Working temp.: From -20°C up to +90°C

Adjustable throttle valve, FPB type, used in hydraulic systems to control a flow rate. The flow rate is controlled by a wheel.

Allowable flow direction: A → A1, A1 → A.

code	thread size [inch]	working pressure [bar]	bursting pressure [bar]	flow rate [l/min]	weight [kg]
DC-FPB-04	1/4	300	1200	12	0.21
DC-FPB-06	3/8	300	1200	30	0.35
DC-FPB-08	1/2	280	1120	45	0.50
DC-FPB-12	3/4	250	1000	85	0.87



Throttle check valve FPU

Material: Body - galvanized steel
Spring - steel
Stem - steel
Knob - plastic

Seal: NBR

Working temp.: From -20°C up to +90°C

Throttle check valve, FPSU type, used in hydraulic systems to open free flow in one direction. The flow, throttled in the opposite direction, is controlled by a rotary ring. Standard opening pressure: 0.5 bar (2.5, 5 and 10 bar available).

Allowable flow direction: A → A1 (free), A1 → A (throttled).

code	thread size [inch]	working pressure [bar]	bursting pressure [bar]	flow rate [l/min]	weight [kg]
DC-FPU-04	1/4	300	1200	12	0.25
DC-FPU-06	3/8	300	1200	30	0.42
DC-FPU-08	1/2	280	1120	45	0.60
DC-FPU-12	3/4	250	1000	85	1.10

picture	code	valve size [inch]	thread size [mm]	description
	DC-TP-04	1/4	M21x1	Tightening nut designed for mounting valves of FPB or FPU type. Material: galvanized steel.
	DC-TP-06	3/8	M25x1.5	
	DC-TP-08	1/2	M30x1.5	
	DC-TP-12	3/4	M35x1.5	