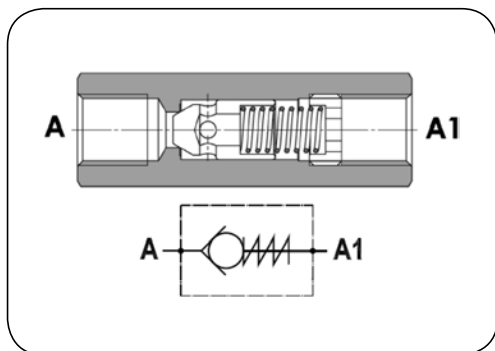


HIGH PRESSURE - valves

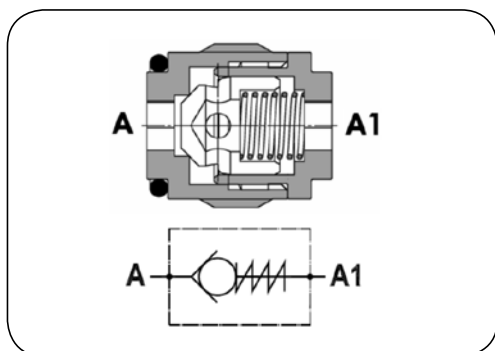


Check valve FPR

Material: Body - galvanized steel
Stem - hardened steel

Check valves, FPR type, designed for closing hydraulic fluid flow in one direction and opening free hydraulic fluid flow in the opposite direction. Standard opening pressure: 0.5 bar (2.5; 5 and 10 bar available).
Allowable flow direction: A → A1.

code	thread size [inch]	working pressure [bar]	bursting pressure [bar]	flow rate [l/min]	weight [kg]
DC-FPR-04	1/4	350	1400	12	0.10
DC-FPR-06	3/8	350	1400	30	0.17
DC-FPR-08	1/2	320	1280	45	0.22
DC-FPR-12	3/4	300	1200	85	0.45
DC-FPR-16	1	250	1000	130	0.97
DC-FPR-20	1.1/4	250	1000	200	1.68
DC-FPR-24	1.1/2	210	840	310	2.10



Check valve FPRI

Material: Body - steel
Stem - hardened steel

Seal: NBR
Working temp.: From -20°C up to +90°C

Check (cartridge) valve, FPRI type, designed for closing hydraulic fluid flow in one direction and opening free hydraulic fluid flow in the opposite direction. Standard opening pressure: 1 bar.
Allowable flow direction: A → A1.

code	thread size [inch]	working pressure [bar]	bursting pressure [bar]	flow rate [l/min]	weight [kg]
DC-FPRI-04	1/4	350	1400	15	0.015
DC-FPRI-06	3/8	350	1400	30	0.025
DC-FPRI-08	1/2	350	1400	45	0.040
DC-FPRI-12	3/4	300	1200	80	0.070