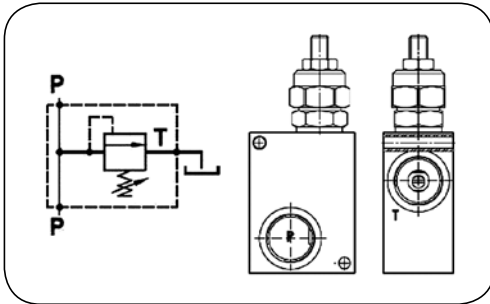


HIGH PRESSURE - valves

Hydraulic safety valves



Pressure relief valve FPM

Material: Body - aluminium
Stem - zinc-plated steel

Seal: NBR

Working temp.: From -20°C up to +90°C

FPM safety valve limits the maximum pressure in a hydraulic system. The valve enables hydraulic fluid to flow freely between P connection ports. When the pressure rises above the set value, T passage opens and the excessive pressurised fluid is relieved out of the system, into the tank. The maximum pressure value is set with an adjusting screw (set with a hex wrench, locked with a locking nut).

code	thread size [inch]	flow rate [l/min]	set pressure range [bar]	set pressure adjustment [bar/turn]	weight [kg]
DC-FPM-40P05-06	3/8	40	5 ÷ 50	10	0.41
DC-FPM-40P10-06	3/8	40	30 ÷ 100	20	0.41
DC-FPM-40P20-06	3/8	40	50 ÷ 220	40	0.41
DC-FPM-40P05-08	1/2	40	5 ÷ 50	10	0.41
DC-FPM-40P10-08	1/2	40	30 ÷ 100	20	0.41
DC-FPM-40P20-08	1/2	40	50 ÷ 220	40	0.41
DC-FPM-70P05-08	1/2	80	5 ÷ 50	10	0.73
DC-FPM-70P10-08	1/2	80	30 ÷ 100	20	0.73
DC-FPM-70P20-08	1/2	80	80 - 280*	40	0.73
DC-FPM-70P05-12	3/4	80	5 ÷ 50	10	0.73
DC-FPM-70P10-12	3/4	80	30 ÷ 100	20	0.73
DC-FPM-70P20-12	3/4	80	80 ÷ 280*	40	0.73

* - be very careful not to set the pressure value higher than 250 bar (max. working pressure of the valve body).