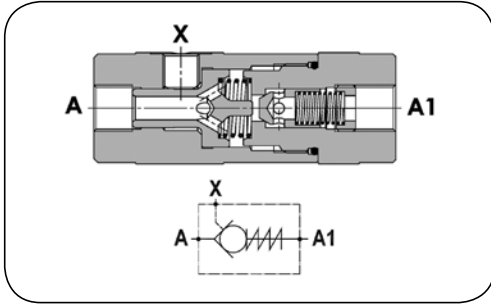


HIGH PRESSURE - valves



Controlled check valve FPS

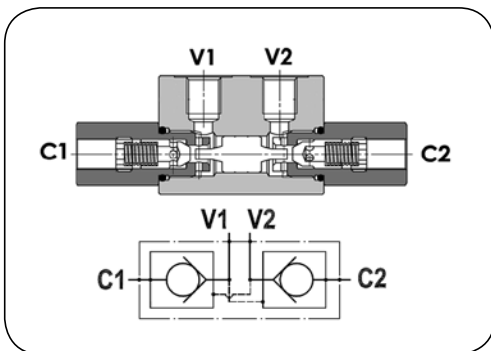
Material: Body - galvanized steel
Stem - hardened steel

Seal: NBR

Working temp.: From -20°C up to +90°C

FPS valve allows free flow of hydraulic fluid in one direction (A → A1) and opening the fluid flow in the opposite direction (A1 → A) but only by X pilot pressure signal. Standard opening pressure (A → A1) 0.5 bar. The pressure required for the X pilot pressure signal to open the flow in the opposite direction (A1 → A) is determined by the product of the multiplication of a pilot ratio and the pressure value on A1 side.

code	thread size [inch]	thread size X [inch]	working pressure [bar]	flow rate [l/min]	pilot ratio	weight [kg]
DC-FPS-04	1/4	1/4	350	12	1:5	0.65
DC-FPS-06	3/8	1/4	310	30	1:4.4	0.82
DC-FPS-08	1/2	1/4	310	45	1:4.2	0.96
DC-FPS-12	3/4	1/4	300	80	1:4	1.95



Controlled check valve FPD

Material: Body - galvanized steel
Springs - hardened steel
Stem - hardened steel

Seal: NBR

Working temp.: From -20°C up to +90°C

Controlled check valve (hydraulic lock), FPD type, applied in hydraulic systems to prevent automatic drop of an actuator. Standard opening pressure: 2 bar (5 and 10 bar available).

Allowable flow directions: V1 → C1 and simultaneously C2 → V2, V2 → C2 and simultaneously C1 → V1.

code	thread size [inch]	working pressure [bar]	bursting pressure [bar]	flow rate [l/min]	weight [kg]
DC-FPD-04	1/4	300	1200	12	0.65
DC-FPD-06-30L*	3/8	300	1200	30	0.63
DC-FPD-06	3/8	300	1200	30	1.75
DC-FPD-08	1/2	250	1000	45	1.78
DC-FPD-12	3/4	280	1120	85	3.25