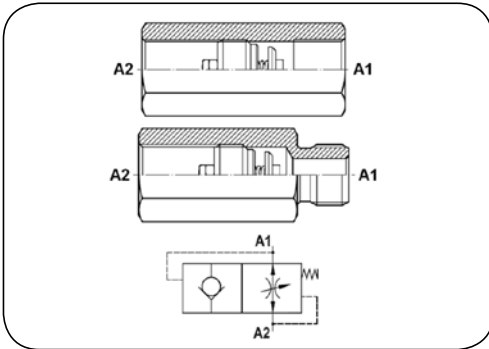


# HIGH PRESSURE - valves

## Throttle and safety valves



### Safety valve FFP, MFP

**Material:** Galvanized steel

Safety valve secures hydraulic system from oil leakage in case of sudden depressurisation (e.g. failure of hose assembly).

Allowable flow direction: A1 → A2 (valve), A2 → A1 (without valve).

code	thread size [inch]	working pressure [bar]	bursting pressure [bar]	flow rate [l/min]	weight [kg]
FFP type (BSP female thread)					
DC-FFP-04	1/4	350	1400	25	0.08
DC-FFP-06	3/8	350	1400	50	0.11
DC-FFP-08	1/2	350	1400	80	0.18
DC-FFP-12	3/4	350	1400	150	0.40
DC-FFP-16	1	300	1200	200	0.88
MFP type (BSP male thread)					
DC-MFP-04	1/4	350	1400	25	0.08
DC-MFP-06	3/8	350	1400	50	0.12
DC-MFP-08	1/2	350	1400	80	0.21
DC-MFP-12	3/4	350	1400	150	0.41
DC-MFP-16	1	300	1200	200	0.86