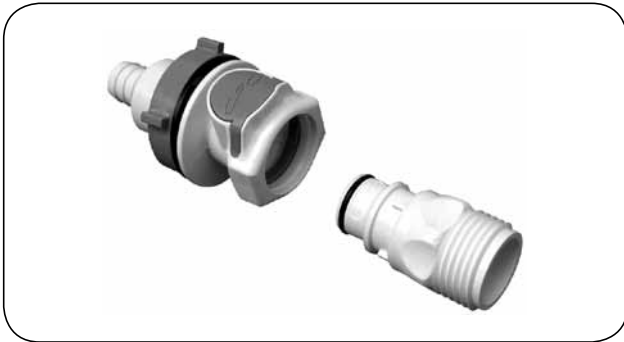


INDUSTRIAL FITTINGS - quick release couplings

CPC - plastic couplings



HFC series DN 12.7

Material: Polypropylene (up to 4.2 bar)
 Polysulfone (up to 8.6 bar)
 Polysulfone UV (up to 8.6 bar)

Seal: EPDM

Working temp.: From 0°C up to +71°C (polypropylene)
 From -40°C up to +138°C (polysulfone)

Couplings designed for water, chemical, and pneumatic installations, etc. They are very lightweight in comparison with traditional heavy couplings with locking balls and ferrule. An ergonomic design and a large push button make it easy to grip and operate. An efficient valve design ensures high flow rates and minimum spillage. In addition the coupling allows some rotation of the connected hose. This feature prevents kinking and accidental disconnection during use. Application: chemical photographic processing, battery and accumulator filling installations, spraying equipment, pneumatic installations and antifreeze fluid systems, etc.

HFC couplings are also available: with valve inner parts made of Hastelloy, with BSPT male thread or 3/4" GHT male thread. The couplings made of polysulfone are highly resistant to chemicals and mechanical impact. Can be sterilized in an autoclave. UV version is resistant to ultraviolet radiation.

picture	description	code				
		polypropylene	polysulfone	polysulfone UV		
	1	with 3/8" NPT male thread	CC-HFV-01-PP	CC-HFV-01-PS	-	
		with 1/2" NPT male thread	CC-HFV-02-PP	CC-HFV-02-PS	CC-HFV-02-PSU	
		with 3/4" NPT male thread	CC-HFV-03-PP	CC-HFV-03-PS	-	
	2	socket	with 3/4" GHT female thread	-	CC-HFV-04-PS	CC-HFV-04-PSU
			with 3/4" BSP female thread	-	CC-HFV-05-PS	CC-HFV-05-PSU
			panel mount for 3/8" hose	CC-HFV-06-PP	CC-HFV-06-PS	CC-HFV-06-PSU*
			panel mount for 1/2" hose	CC-HFV-07-PP	CC-HFV-07-PS	CC-HFV-07-PSU*
			panel mount for 5/8" hose	CC-HFV-08-PP	CC-HFV-08-PS	CC-HFV-08-PSU*
			panel mount for 3/4" hose	CC-HFV-09-PP	CC-HFV-09-PS	CC-HFV-09-PSU*
			panel mount for 3/8" hose (O.D.)	CC-HFV-10-PP	-	-
			panel mount for 1/2" hose (O.D.)	CC-HFV-11-PP	-	-
			for 3/8" hose	CC-HFV-12-PP	CC-HFV-12-PS	CC-HFV-12-PSU
			for 1/2" hose	CC-HFV-13-PP	CC-HFV-13-PS	CC-HFV-13-PSU
	3	plug	for 5/8" hose	CC-HFV-14-PP	CC-HFV-14-PS	CC-HFV-14-PSU
			for 3/4" hose	CC-HFV-15-PP	CC-HFV-15-PS	CC-HFV-15-PSU
			for 3/8" hose (O.D.)	CC-HFV-16-PP	-	-
			for 1/2" hose (O.D.)	CC-HFV-17-PP	-	-
with 3/8" NPT male thread			CC-HFV-18-PP	CC-HFV-18-PS	-	
with 1/2" NPT male thread			CC-HFV-19-PP	CC-HFV-19-PS	CC-HFV-19-PSU	
with 3/4" NPT male thread			CC-HFV-20-PP	CC-HFV-20-PS	-	
for 3/8" hose			CC-HFV-21-PP	CC-HFV-21-PS	CC-HFV-21-PSU	
4	plug	for 1/2" hose	CC-HFV-22-PP	CC-HFV-22-PS	CC-HFV-22-PSU	
		for 5/8" hose	CC-HFV-23-PP	CC-HFV-23-PS	CC-HFV-23-PSU	
		for 3/4" hose	CC-HFV-24-PP	CC-HFV-24-PS	CC-HFV-24-PSU	
		for 3/8" hose (O.D.)	CC-HFV-25-PP	-	-	
		for 1/2" hose (O.D.)	CC-HFV-26-PP	-	-	
5	plug	90° elbow for 3/8" hose	CC-HFV-27-PP	CC-HFV-27-PS	-	
		90° elbow for 1/2" hose	CC-HFV-28-PP	CC-HFV-28-PS	-	
		with 3/4" GHT female thread	-	CC-HFV-29-PS	CC-HFV-29-PSU	
		with 3/4" BSP female thread	-	CC-HFV-30-PS	CC-HFV-30-PSU	

- Note!
- The codes given above apply to versions with valves. A code example of the version without the valve e.g.: CC-HFX-10-PP (* - always valved).
 - Versions for application in food and pharmaceutical industry or medical equipment are also available.