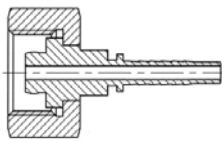


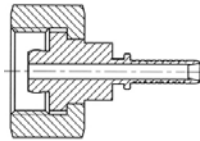
# INDUSTRIAL HOSES - technical gas

## Fittings for high pressure gas hoses

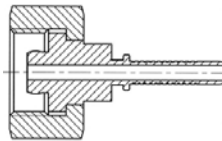
High pressure gas hoses can be used with many types of fittings in different shapes. Most of those fittings are adjusted to be connected to the valves of gas cylinders. The types of couplings of gas cylinder valves are listed in PN-81/M-69229 and DIN477-1. The standards specify the types of couplings (sizes, threads) and indicate the application with the particular type of gas. The size and shape of a tail end fitting depends on the size and type of the hose (rubber hydraulic, thermoplastic, PTFE, steel, SPIR STAR®). Material of the fittings must be resistant to the corrosive effect of gases, while some other materials must not be used (e.g. copper and copper alloys for acetylene and ammonia). Usually a fitting made of AISI 304 stainless steel with a brass nut are applicable. Other types of couplings according to the customer's specification or standards are also available e.g. elbows, but also those made of other materials e.g. zinc-plated carbon steel, AISI 316 stainless steel.



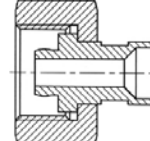
TI-ZBW170  
TI-ZWW170



AF-HBW170  
AF-HWW170



AF-TLBW170  
AF-TLWW170



TB-SBW170  
TB-SWW170

hose type	code			
	DN6 (1/4")	DN8 (5/16")	DN10 (3/8")	DN12 (1/2")
G-3/4" (3/4"-BSP) female thread, connection according to PN-81/M69229 (DIN477-1 No. 9) Material: fitting - AISI 304 steel, nut - brass, application: oxygen, carbogen.				
thermoplastic, hydraulic	TI-ZBW170-12-04-SS-MO	TI-ZBW170-12-05-SS-MO	TI-ZBW170-12-06-SS-MO	TI-ZBW170-12-08-SS-MO
PTFE HPG HI	-	-	-	-
PTFE HPG	AF-TLBW170-12-04-SS-MO	AF-TLBW170-12-05-SS-MO	AF-TLBW170-12-06-SS-MO	-
steel	TB-SBW170-12-04-SS-MO	-	TB-SBW170-16-06-SS-MO	TB-SBW170-12-08-SS-MO
Whitworth W21.8x1/14" female thread, connection according to PN-81/M-69229 (DIN477-1 No. 6) Material: fitting - AISI 304 steel, nut - brass, application: ammonia, argon, carbon dioxide, helium and many other.				
thermoplastic, hydraulic	TI-ZWW170-21-04-SS-MO	TI-ZWW170-21-05-SS-MO	TI-ZWW170-21-06-SS-MO	TI-ZWW170-21-08SS-MO TI-ZWW270-21-08-SS-MO
PTFE HPG HI	AF-HWW170-21-04-SS-MO	-	-	-
PTFE HPG	AF-TLWW170-21-04-SS-MO	AF-TLWW170-21-05-SS-MO	AF-TLWW170-21-06-SS-MO	-
steel	TB-SWW170-21-04-SS-MO	-	-	-
Whitworth W21.8x1/14" L (left) female thread, connection according to PN-81/M-69229 (DIN477-1 No. 1) Material: fitting - AISI 304 steel, nut - brass, application - hydrogen, methane, other flammable gases.				
thermoplastic, hydraulic	TI-ZWW170-21L-04-SS-MO	TI-ZWW170-21L-05-SS-MO	TI-ZWW170-21L-06-SS-MO	-
PTFE HPG HI	AF-HWW170-21L-04-SS-MO AF-HWW270-21L-04-SS-MO	-	-	-
PTFE HPG	AF-TLWW170-21L-04-SS-MO	AF-TLWW170-21L-05-SS-MO	AF-TLWW170-21L-06-SS-MO	-
steel	TB-SWW170-21L-04-SS-MO	-	TB-SWW170-21L-06-SS-MO	-
Whitworth W24.32x1/14" female thread, connection according to PN-81/M-69229 (DIN477-1 No. 10) Material: fitting - AISI 304 steel, nut - brass, application - nitrogen.				
thermoplastic, hydraulic	TI-ZWW170-24-04-SS-MO	-	TI-ZWW170-24-06-SS-MO	TI-ZWW170-24-08-SS-MO
PTFE HPG HI	AF-HWW270-24-04-SS-MO	-	TI-HWW270-24-06-SS-MO	-
PTFE HPG	AF-TLWW170-24-04-SS-MO AF-TLWW270-24-04-SS-MO	AF-TLWW170-24-05-SS-MO AF-TLWW370-24-05-SS-MO	AF-TLWW170-24-06-SS-MO	-
steel	TB-SWW-170-24-04-SS-MO	-	-	-