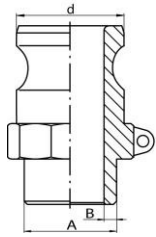


CAMLOCK connectors

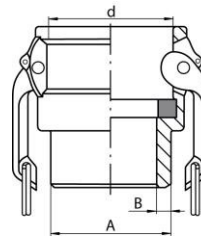
Type FW



CAMLOCK connector plug
with butt welding end

stainless steel AISI 316

Type BW



CAMLOCK connector socket
with butt welding end

stainless steel AISI 316

DN [mm]	connector [inch]	connector size			plug index (AISI 316 steel)	socket index (AISI 316 steel)
		d (plug) [mm]	Outside diameter A [mm]	thickness B [mm]		
15	1/2	~ 24	21,3	2	AC-FW-050-SS AC-FW-050-SSX	AC-BW-050-SS AC-BW-050-SSX
20	3/4	32,1	26,7	2,3	AC-FW-075-SS AC-FW-075-SSX	AC-BW-075-SS AC-BW-075-SSX
25	1	36,7	33,4	2,6	AC-FW-100-SS AC-FW-100-SSX	AC-BW-100-SS AC-BW-100-SSX
32	1.1/4	45,5	42,2	2,6	AC-FW-125-SS AC-FW-125-SSX	AC-BW-125-SS AC-BW-125-SSX
40	1.1/2	53,4	48,3	2,6	AC-FW-150-SS AC-FW-150-SSX	AC-BW-150-SS AC-BW-150-SSX
50	2	63	60,3	2,9	AC-FW-200-SS AC-FW-200-SSX	AC-BW-200-SS AC-BW-200-SSX
65	2.1/2	75,8	76	2,9	AC-FW-250-SS AC-FW-250-SSX	AC-BW-250-SS AC-BW-250-SSX
80	3	91,5	88,9	3,2	AC-FW-300-SS AC-FW-300-SSX	AC-BW-300-SS AC-BW-300-SSX
100	4	119,5	114,3	3,6	AC-FW-400-SS AC-FW-400-SSX	AC-BW-400-SS AC-BW-400-SSX



CAMLOCK connector connector butt-welded to a BSP male threaded end (end index: TK-WGZ-050-200).



CAMLOCK connector socket butt-welded to seamless EN 10216-2 pipe (pipe index: MPR-RBSZ-060X2.9- SS321) in AISI 321 steel.



Bevel Y 30°

