

# INDUSTRIAL HOSES - air-conditioning

## General information about refrigerants

Refrigerant is a substance engaged in a process of heat exchange in refrigeration systems. The refrigerant absorbs heat by evaporation at low temperature and low pressure, then it gives up heat when vapour is condensed at the respectively higher temperature and pressure. A refrigerant can be made of a single substance or a combination of two or more substances.

There are numerous substances that can be employed as refrigerants: natural substances (ammonia, water, carbon dioxide), flammable gases and their mixtures (propane, butane) and synthetic media - hydrocarbons, where atoms of hydrogen were substituted by chlorine, fluoride or bromine obtaining non-flammable, low-boiling substances commonly known as "Freons". Refrigerants are usually defined with a number preceded by a letter R: R12, R22, R134a. Due to environmental concerns (ozone depletion) the application of some refrigerants is limited and prohibited of the others - in new or refilled equipment (e.g. R12, R22, R502).

- R12** - formerly the most popular refrigerant, used in household refrigerators, replaced with R134a.  
**R22, R502** - used in large refrigerating equipment, now being replaced with recently designed blends such as R402A, R404A, R407, R507.  
**R134a** - the most common refrigerant at the moment, especially in car air-conditioning.

A refrigerant is usually called with the brand name of its manufacturer e.g.: Suva HP62, Suva MP52, Forane134a, Reclin 404A etc.

Apart from refrigerants, there are lubricants also used in installations. The impact of lubricants on the material of hoses and sealing have to be taken into account. Common lubricants: mineral oils, ester oil, polyalkylene glycol (PAG).



## FR 5

- Internal layer:** Polyamide (PA) + thermoplastic elastomer (TPE) (from 1/12" to 1/4")  
 Polyamide (from 5/16" to 1")  
**Reinforcement:** Polyester braid  
**External layer:** Pin-pricked polyurethane, resistant to abrasion  
**Working temp.:** From -45°C up to +130°C

Lightweight, flexible hose designed for commercial refrigeration systems (alternative to copper pipes) and automotive air-conditioning (filling and testing). Particularly recommended for Freons (R22, R134a, R404a, R407c, R410a, R507), POE and PAG compressor oils. The hose in sizes from 1/12" to 1/4" can be also used to transfer CO<sub>2</sub> (R-744) - when CO<sub>2</sub> is used as a refrigerant, pressure must be up to 10 times higher than when regular Freons are used. Assembly - use ZC-FR type fittings.

code	I.D. [mm]	O.D. [mm]	working pressure [bar]	bursting pressure [bar]	bending radius [mm]	weight [kg/100 m]
ZC-FR5-02	2.1	6	120	600	15	2.80
ZC-FR5-04	4	8.2	120	600	30	4.30

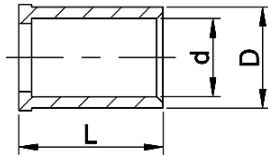
Assembly - use Z type fittings (IT-46).

code	I.D. [mm]	O.D. [mm]	working pressure [bar]	bursting pressure [bar]	bending radius [mm]	weight [kg/100 m]
ZC-FR5-05	4.8	10.1	120	600	50	6.90
ZC-FR5-06	6.4	11.9	120	600	75	8.60
ZC-FR5-08	8.1	14.2	60	300	89	12.00
ZC-FR5-10	9.7	15.6	60	300	100	13.40
ZC-FR5-13	12.9	19.3	60	300	125	18.00
ZC-FR5-16	16	22.3	45	225	165	20.90
ZC-FR5-19	19.2	25.3	45	225	250	25.70
ZC-FR5-25	25.4	32.3	45	225	300	34.40

# INDUSTRIAL HOSES - air-conditioning

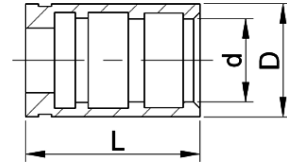
## Fittings for ZC-FR5-02 (1/12") and ZC-FR5-04 (5/32") hoses

Ferrule for 1/12" hose (aluminium)



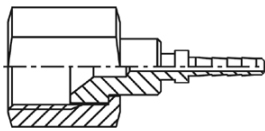
code	L [mm]	d [mm]	D [mm]
ZC-FR-015	11.5	6.2	8

Ferrule for 5/32" hose (aluminium)



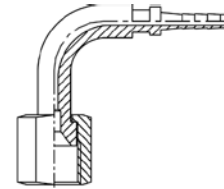
code	L [mm]	d [mm]	D [mm]
ZC-FR-025	18	8.6	11.2

UNF female thread, SAE type, 45° cone, (1/12 - brass, 5/32 - steel)



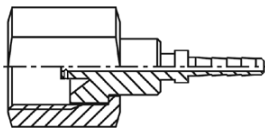
code	thread [inch]	hose I.D. [inch]
ZC-FR101-04-015	7/16-20 UNF (1/4 SAE)	1/12
ZC-FR101-04-025	7/16-20 UNF (1/4 SAE)	5/32
ZC-FR101-06-025	5/8-18 UNF (3/8 SAE)	5/32

UNF female thread, SAE type, 45° cone, (1/12 - brass, 5/32 - steel)



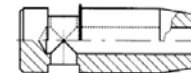
code	thread [inch]	hose I.D. [inch]
ZC-FR102-04-015	7/16-20 UNF (1/4 SAE)	1/12
ZC-FR102-04-025	7/16-20 UNF (1/4 SAE)	5/32
ZC-FR102-06-025	5/8-18 UNF (3/8 SAE)	5/32

UNF fem. thread, SAE type, 45° cone, with throttle (brass)



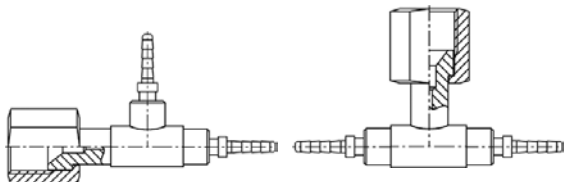
code	thread [inch]	hose I.D. [inch]
ZC-FR103-04-015	7/16-20 UNF (1/4 SAE)	1/12

Throttle for FR103 type fitting (brass)



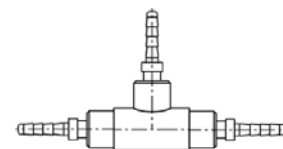
code	thread [inch]
ZC-FR103-D	7/16-20 UNF (1/4 SAE)

Tee-adapter, UNF female thread, SAE type, 45° cone, (brass)



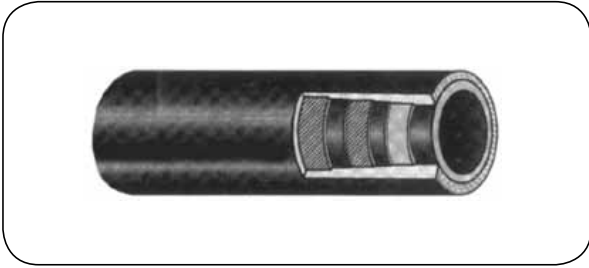
code	thread [inch]	hose I.D. [inch]
ZC-FR105-015	7/16-20 UNF (1/4 SAE)	1/12
ZC-FR106-015	7/16-20 UNF (1/4 SAE)	1/12

Tee-connector (brass)



code	hose I.D. [inch]
ZC-FR104-015	1/12

## INDUSTRIAL HOSES - air-conditioning



### 3055, 3060

**Internal layer:** Synthetic rubber (CR), nylon layer (PA), synthetic rubber (NBR)  
**Reinforcement:** Double textile braid (3060 - single)  
**External layer:** Pin-pricked synthetic rubber (3055 - EPDM, 3060 - IIR)  
**Working temp.:** From -35°C up to +125°C

The top grade hose designed for automotive and commercial refrigeration systems, air-conditioning systems operating with the use of Freon R 12, R 134a, Suva MP 52, R 22, and such lubricants as mineral oils, esters, PAG. External layer resistant to oil, abrasion and weather conditions. The hose type 3060 has an extremely small outside diameter that provides increased flexibility and lower weight (LW).

Standards - 3055 - SAE J51b AII/SAE J2064, 3060 - GM:SD2-254, FORD: WHSM 96D25, CHRYSLER:PF6318. Assembly - use fittings for air-conditioning - BU (IT-43, IT-44, IT-73).

type	code	I.D. [inch]	I.D. [mm]	O.D. [mm]	working pressure [bar]	bursting pressure [bar]	bending radius [mm]
3055	BU-3055-08	5/16	7.9	18.3	24	121	102
	BU-3055-10	13/32	10.3	22.4	24	121	114
	BU-3055-13	1/2	12.7	24.6	24	121	127
	BU-3055-16	5/8	15.9	27.7	17	86	165
3060 (LW)	BU-3060-08	5/16	7.9 ÷ 8.6	14.2 ÷ 15.2	34.5	172	51
	BU-3060-10	13/32	10.2 ÷ 11.2	16.8 ÷ 17.8	34.5	172	64
	BU-3060-13	1/2	12.5 ÷ 13.5	18.9 ÷ 19.9	34.5	121	76
	BU-3060-16	5/8	15.6 ÷ 16.6	23.1 ÷ 24.1	34.5	121	102



### 3056

**Internal layer:** Synthetic rubber IIR (CR for 3/16")  
**Reinforcement:** Single steel braid  
**External layer:** Pin-pricked synthetic rubber (CSM)  
**Working temp.:** From -40°C up to +125°C

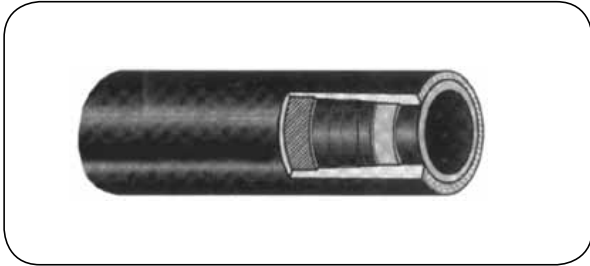
The top grade hose designed for automotive (especially trucks and buses) and commercial refrigeration systems, air-conditioning systems operating with the use of Freon R134a and such lubricants as mineral oils, esters, PAG. External layer resistant to oil, abrasion and weather conditions.

Standards - SAE J2064 type B (SAE 100R5 dimensions).

Assembly - use fittings for air-conditioning - BU.

code	I.D. [inch]	I.D. [mm]	O.D. [mm]	working pressure [bar]	bursting pressure [bar]	bending radius [mm]
BU-3056-05	3/16	4.8	13.1	35	137	85
BU-3056-22	7/8	22.2	31.4	35	137	155
BU-3056-28	1.1/8	28.6	38.1	35	137	190

# INDUSTRIAL HOSES - air-conditioning



## 3090

**Internal layer:** Synthetic rubber (CR) with a nylon (PA) interlayer  
**Reinforcement:** Single textile braid  
**External layer:** Pin-pricked synthetic rubber (CIIR)  
**Working temp.:** From -40°C up to +135°C

The top grade hose designed for automotive and commercial refrigeration systems, air-conditioning systems operating with the use of R134a (also R12, Suva MP52, R22, HFO1234yf) and such lubricants as mineral oils, esters, PAG. External layer resistant to abrasion and weather conditions.

Assembly - use fittings for air-conditioning BU-54... (BURGACLIP system, IT-73) or BU-53... (IT-43, IT-44).

code	I.D. [inch]	I.D. [mm]	O.D. [mm]	working pressure [bar]	bursting pressure [bar]	bending radius [mm]
BU-3090-08	5/16	7.9÷8.6	14.2÷15.2	35	172	51
BU-3090-10	13/32	10.2÷11.2	16.8÷17.8	35	172	64
BU-3090-13	1/2	12.5÷13.5	18.9÷19.9	35	121	76
BU-3090-16	5/8	15.6÷16.6	23.1÷24.1	35	121	102
BU-3090-19	3/4	18.9÷19.9	28.1÷29.1	35	121	250
BU-3090-22	7/8	22	31	35	121	-

## Air-conditioning fittings assembly

Thermoplastic hoses designed for air-conditioning applications (e.g. FR5) are usually used with standard hydraulic fittings (Z type) and matching crimp ferrules.

Rubber hoses designed for air-conditioning require specially designed fittings in aluminium or steel: reusable, crimp or for assembly with the use of special clips (fast assembly system).

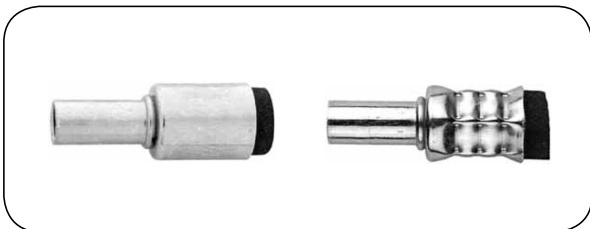


### Reusable fittings

Assembly of a fitting is performed by screwing the fitting together with a ferrule that was fitted on the hose. An advantage of this solution is a lack of need to use tools - useful in the field conditions.

### Fast assembly system

Special design of a fitting tail and a clip enables fast and easy assembly using only assembly pliers.



### Crimp fittings

A crimp fitting for air-conditioning has an integrated ferrule. The crimping process is performed by crimping pliers, crimping machines designed for air-conditioning or by standard FINN-POWER crimping machines (with special die sets).



### Hose assembly repair

If a hose assembly failed but its fittings are not damaged, it can be easily repaired by brazing the fittings to nipples and assembling then once again on the new hose.

## INDUSTRIAL HOSES - air-conditioning

### BURGACLIP fast assembly system



The system enables fast and easy assembly of air-conditioning fittings with the use of special clamps that are tightened with assembly pliers. Special design of a tail combined with a top grade hose ensures excellent quality of the hose assembly - very low Freon permeability.

We provide a range of fittings for fast assembly system (designed for 3090 hose in particular).



D-294050

### Assembly pliers

Special clip pliers designed to assemble clips of the air-conditioning fittings - BURGACLIP.



BU-CASE-1

### Tool case

The case includes a full set of tools necessary to assemble an air-conditioning hose and fittings of BURGACLIP system.

The case contains:

- special clip pliers designed to assemble clips of the air-conditioning fittings - BURGACLIP,
- hose cutter for hose of BU-3090 type in DN 8, 10, 12, 16 dimension,
- dual range hose cutter for hoses with an outside diameter up to 42 mm.



BU-CASE-2

### Service case

The case contains a set of various (most often used) BURGACLIP fittings for BU-3090 hose type in DN 8, 10, 12 and 16.

The case contains:

- 80 BURGACLIP clips,
- 40 BURGACLIP clip holders,
- 39 BURGACLIP fittings (straight, elbow, UNF thread, for compressors, type: SAE, ORFS),
- 80 HNBR O-rings.

# INDUSTRIAL HOSES - air-conditioning

## Fittings for air-conditioning rubber hoses - BURGACLIP

### BURGACLIP - assembly elements



**8769**



**8768**

fitting connection size	hose I.D. [inch]	clip holder (plastic)		clip (stainless steel)	
		code		code	
-06	5/16	BU-8769-06		BU-8768-06	
-08	13/32	BU-8769-08		BU-8768-08	
-10	1/2	BU-8769-10		BU-8768-10	
-12	5/8	BU-8769-12		BU-8768-12	
-14	3/4	BU-8769-14		BU-8768-14	
-16	7/8	BU-8769-16		BU-8768-16	

### BURGACLIP - braze nipples



**54743**

fitting connection size	hose dash	connection size [inch]	hose I.D. [inch]	code
-06	-06	3/8	5/16	BU-54743-06-06-S
-06	-08	3/8	13/32	BU-54743-06-08-S
-08	-08	1/2	13/32	BU-54743-08-08-S
-08	-10	1/2	1/2	BU-54743-08-10-S
-10	-10	5/8	1/2	BU-54743-10-10-S
-10	-12	5/8	5/8	BU-54743-10-12-S
-12	-12	3/4	5/8	BU-54743-12-12-S
-12	-14	3/4	3/4	BU-54743-12-14-S
-16	-16	1	7/8	BU-54743-16-16-S

### BURGACLIP - connectors



**548753**



**548751**



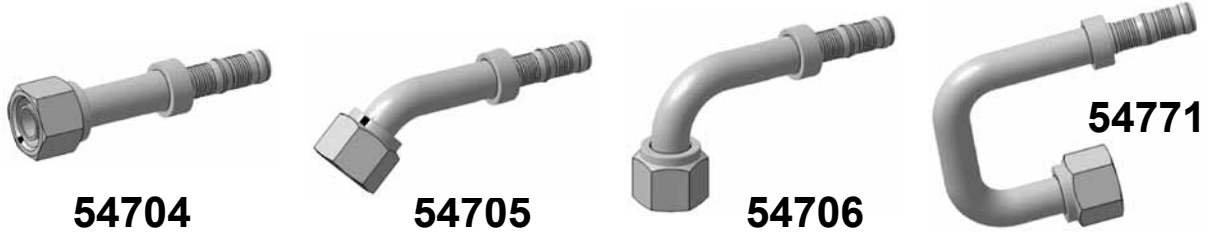
**548749**

hose dash	hose I.D. [inch]	valve size [mm]	connector		90° connector	
			code		code	
-06	5/16	16	BU-548753-06-06-S	BU-548751-06-06-S	BU-548749-06-06-S	
-08	13/32	16	BU-548753-08-08-S	BU-548751-08-08-S	BU-548749-08-08-S	
-10	1/2	13	BU-548753-10-10-S	BU-548751-10-10-S	BU-548749-10-10-S	
-12	5/8	13	BU-548753-12-12-S	BU-548751-12-12-S	BU-548749-12-12-S	

# INDUSTRIAL HOSES - air-conditioning

## Fittings for air-conditioning rubber hoses - BURGACLIP

BURGACLIP - tube connection fitting with UNF female thread



fitting connection size	hose dash	thread [inch]	hose I.D. [inch]	straight	45°	90°	180°
				code	code	code	code
-05	-06	9/16-18	5/16	BU-54704-05-06-S	BU-54705-05-06-S	BU-54706-05-06-S	-
-06	-06	5/8-18	5/16	BU-54704-06-06-S	BU-54705-06-06-S	BU-54706-06-06-S	BU-54771-06-06-S
-06	-08	5/8-18	13/32	BU-54704-06-08-S	-	BU-54706-06-08-S	-
-08	-06	3/4-16	5/16	BU-54704-08-06-S	BU-54705-08-06-S	BU-54706-08-06-S	-
-08	-08	3/4-16	13/32	BU-54704-08-08-S	BU-54705-08-08-S	BU-54706-08-08-S	BU-54771-08-08-S
-08	-10	3/4-16	1/2	BU-54704-08-10-S	BU-54705-08-10-S	BU-54706-08-10-S	-
-10	-06	7/8-14	5/16	BU-54704-10-06-S	-	BU-54706-10-06-S	-
-10	-08	7/8-14	13/32	BU-54704-10-08-S	-	BU-54706-10-08-S	-
-10	-10	7/8-14	1/2	BU-54704-10-10-S	BU-54705-10-10-S	BU-54706-10-10-S	BU-54771-10-10-S
-10	-12	7/8-14	5/8	BU-54704-10-12-S	BU-54705-10-12-S	BU-54706-10-12-S	-
-12	-10	1.1/16-14	1/2	BU-54704-12-10-S	BU-54705-12-10-S	BU-54706-12-10-S	-
-12	-12	1.1/16-14	5/8	BU-54704-12-12-S	BU-54705-12-12-S	BU-54706-12-12-S	BU-54771-12-12-S
-12	-14	1.1/16-14	3/4	-	BU-54705-12-14-S	-	BU-54771-12-14-S
-12	-16	1.1/16-14	7/8	BU-54704-12-16-S	BU-54705-12-16-S	BU-54706-12-16-S	BU-54771-12-16-S

BURGACLIP - compressor fitting with UNF female thread



fitting connection size	hose dash	thread [inch]	hose I.D. [inch]	straight	45°	90°
				code	code	code
-10	-08	1-14	13/32	BU-54707-10-08-S	BU-54708-10-08-S	BU-54709-10-08-S
-10	-10	1-14	1/2	BU-54707-10-10-S	BU-54708-10-10-S	BU-54709-10-10-S
-10	-12	1-14	5/8	BU-54707-10-12-S	BU-54708-10-12-S	BU-54709-10-12-S



BURGACLIP - compressor fitting with UNF female thread and R134 valve






fitting connection size	hose dash	thread [inch]	hose I.D. [inch]	valve size	straight	45°	90°
					code	code	code
-10	-08	1-14	13/32	16	BU-54733-10-08-S	BU-54734-10-08-S	BU-54735-10-08-S
-10	-10	1-14	1/2	13	BU-54733-10-10-S	BU-54734-10-10-S	BU-54735-10-10-S
-10	-12	1-14	5/8	13	BU-54733-10-12-S	BU-54734-10-12-S	BU-54735-10-12-S

# INDUSTRIAL HOSES - air-conditioning

## Fittings for air-conditioning rubber hoses - BURGACLIP

BURGACLIP - tees							
							
<b>548750</b>				<b>548752</b>			
hose dash 1	hose I.D. 1 [inch]	hose dash 2	hose I.D. 2 [inch]	hose dash 3	hose I.D. 3 [inch]	T-tee	Y-tee
						code	code
-06	5/16	-06	5/16	-06	5/16	BU-548750-06-06-06-S	BU-548752-06-06-06-S
-08	13/32	-06	5/16	-06	5/16	BU-548750-08-06-06-S	-
-08	13/32	-08	13/32	-08	13/32	BU-548750-08-08-08-S	BU-548752-08-08-08-S
-10	1/2	-08	13/32	-08	13/32	BU-548750-10-08-08-S	-
-10	1/2	-10	1/2	-08	13/32	BU-548750-10-10-08-S	-
-10	1/2	-10	1/2	-10	1/2	BU-548750-10-10-10-S	BU-548752-10-10-10-S
-12	5/8	-10	1/2	-08	13/32	BU-548750-12-10-08-S	-
-12	5/8	-10	1/2	-10	1/2	BU-548750-12-10-10-S	-
-12	5/8	-12	5/8	-12	5/8	BU-548750-12-12-12-S	BU-548752-12-12-12-S

BURGACLIP - tube connection fitting with UNF female thread and R134 valve							
							
<b>54717</b>		<b>54718</b>			<b>54719</b>		
fitting connection size	hose dash	thread [inch]	hose I.D. [inch]	valve size [mm]	straight	45°	90°
					code	code	code
-06	-06	5/8-18	5/16	16	BU-54717-06-06-S*	BU-54718-06-06-S*	BU-54719-06-06-S*
-06	-08	5/8-18	13/32	16	-	-	BU-54719-06-08-S*
-08	-08	3/4-16	13/32	16	BU-54717-08-08-S*	BU-54718-08-08-S*	BU-54719-08-08-S
-08	-10	3/4-16	1/2	16	BU-54717-08-10-S*	-	BU-54719-08-10-S
-08	-12	3/4-16	5/8	16	-	-	BU-54719-08-12-S
-10	-08	7/8-14	13/32	13	-	-	BU-54719-10-08-S
-10	-10	7/8-14	1/2	13	BU-54717-10-10-S*	BU-54718-10-10-S*	BU-54719-10-10-S*
-10	-12	7/8-14	5/8	13	BU-54717-10-12-S*	BU-54718-10-12-S*	BU-54719-10-12-S*
-12	-12	1.1/16-14	5/8	13	BU-54717-12-12-S*	BU-54718-12-12-S*	BU-54719-12-12-S*
-12	-14	1.1/16-14	3/4	13	BU-54717-12-14-S	BU-54718-12-14-S	BU-54719-12-14-S
-12	-16	1.1/16-14	7/8	13	BU-54717-12-16-S	BU-54718-12-16-S	BU-54719-12-16-S

\* - available with R12 valve (BU-54710 - straight, BU-54711 - 45°, BU-54712 - 90°)



# INDUSTRIAL HOSES - air-conditioning

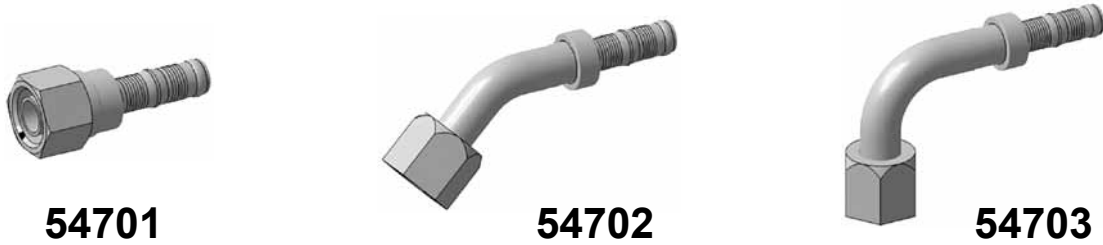
## Fittings for air-conditioning rubber hoses - BURGACLIP

BURGACLIP - tube connection fitting without nut



fitting connection size	hose dash	tube [mm]	hose I.D. [inch]	straight	45°	90°
				code	code	code
-06	-06	8.5	5/16	BU-54724-06-06-S	BU-54725-06-06-S	BU-54726-06-06-S
-08	-06	11.6	5/16	BU-54724-08-06-S	BU-54725-08-06-S	BU-54726-08-06-S
-08	-08	11.6	13/32	BU-54724-08-08-S	BU-54725-08-08-S	BU-54726-08-08-S
-10	-10	14.4	1/2	BU-54724-10-10-S	-	-
-10	-12	14.4	5/8	BU-54724-10-12-S	-	-
-12	-10	17.5	1/2	BU-54724-12-10-S	BU-54725-12-10-S	BU-54726-12-10-S
-12	-12	17.5	5/8	BU-54724-12-12-S	BU-54725-12-12-S	BU-54726-12-12-S
-12	-14	17.5	3/4	BU-54724-12-14-S	BU-54725-12-14-S	BU-54726-12-14-S
-12	-16	17.5	7/8	BU-54724-12-16-S	BU-54725-12-16-S	BU-54726-12-16-S

BURGACLIP - connection fitting with UNF female thread, SAE type, 45° cone

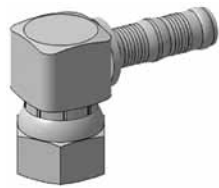


fitting connection size	hose dash	thread [inch]	hose I.D. [inch]	straight	45°	90°
				code	code	code
-04	-06	7/16-20	5/16	BU-54701-04-06-S	BU-54702-04-06-S	BU-54703-04-06-S
-06	-06	5/8-18	5/16	BU-54701-06-06-S	BU-54702-06-06-S	BU-54703-06-06-S
-06	-08	5/8-18	13/32	BU-54701-06-08-S	-	BU-54703-06-08-S
-08	-06	3/4-16	5/16	BU-54701-08-06-S	-	BU-54703-08-06-S
-08	-08	3/4-16	13/32	BU-54701-08-08-S	BU-54702-08-08-S	BU-54703-08-08-S
-08	-10	3/4-16	1/2	BU-54701-08-10-S	-	BU-54703-08-10-S
-10	-08	7/8-14	13/32	BU-54701-10-08-S	BU-54702-10-08-S	BU-54703-10-08-S
-10	-10	7/8-14	1/2	BU-54701-10-10-S	BU-54702-10-10-S	BU-54703-10-10-S
-10	-12	7/8-14	5/8	BU-54701-10-12-S	BU-54702-10-12-S	BU-54703-10-12-S
-12	-12	1.1/16-14	5/8	BU-54701-12-12-S	BU-54702-12-12-S	BU-54703-12-12-S
-12	-14	1.1/16-14	3/4	BU-54701-12-14-S	BU-54702-12-14-S	-
-16	-16	1.5/16-14	7/8	BU-54701-16-16-S	BU-54702-16-16-S	BU-54703-16-16-S

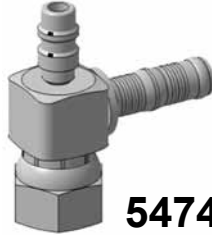
# INDUSTRIAL HOSES - air-conditioning

## Fittings for air-conditioning rubber hoses - BURGACLIP

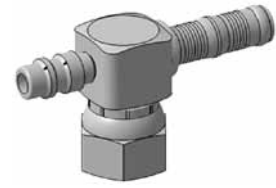
BURGACLIP - tube connection fitting with UNF female thread



**54740 (54421)**



**54742**

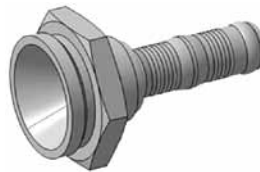


**54412 (54422)**

fitting connection size	hose dash	thread [inch]	hose I.D. [inch]	valve size [mm]	standard	with R134 valve	with R134 valve
					code	code	code
-06	-06	5/8-18	5/16	16	BU-54740-06-06-S	BU-54742-06-06-S	BU-54412-06-06-S
-08	-08	3/4-16	13/32	16	BU-54740-08-08-S	BU-54742-08-08-S	BU-54412-08-08-S
-10	-08	7/8-14	13/32	16	BU-54421-10-08-S*		BU-54422-10-08-S*
-10	-10	7/8-14	1/2	13	BU-54740-10-10-S	BU-54742-10-10-S	BU-54412-10-10-S
-10	-10	7/8-14	1/2	13	BU-54421-10-10-S*		BU-54422-10-10-S*
-10	-12	7/8-14	5/8	13	BU-54740-10-12-S	BU-54742-10-12-S	-
-12	-12	1.1/16-14	5/8	13	BU-54740-12-12-S	BU-54742-12-12-S	BU-54412-12-12-S
-12	-14	1.1/16-14	3/4	13	BU-54740-12-14-S	BU-54742-12-14-S	-
-12	-16	1.1/16-14	7/8	13	BU-54740-12-16-S	BU-54742-12-16-S	-

\* - „short drop” version - with short part with a nut

BURGACLIP - quick release coupling connection



**54747**

fitting connection size	hose dash	thread [inch]	hose I.D. [inch]	code
-08	-06	7/8-20	5/16	BU-54747-08-06S
-08	-08	7/8-20	13/32	BU-54747-08-08S
-12	-10	1.1/4-18	1/2	BU-54747-12-10S

BURGACLIP - connection fitting with a female metric thread, type DIN 3865, 24° cone, light series



**54901**



**54910**



**54904**

fitting connection size	hose dash	thread [mm]	hose I.D. [inch]	straight	45°	90°
				code	code	code
-22	-14	M30x2	3/4	BU-54901-22-14-S	BU-54910-22-14-S	BU-54904-22-14-S
-22	-16	M30x2	7/8	BU-54901-22-16-S	BU-54910-22-16-S	BU-54904-22-16-S

# INDUSTRIAL HOSES - air-conditioning

## Fittings for air-conditioning rubber hoses - BURGACLIP

BURGACLIP - tube connection fitting with UNF male thread



fitting connection size	hose dash	thread [inch]	hose I.D. [inch]	straight	45°	90°
				code	code	code
-06	-06	5/8-18	5/16	BU-54213-06-06-S	BU-54215-06-06-S	BU-54214-06-06-S
-08	-08	3/4-18	13/32	BU-54213-08-08-S	BU-54215-08-08-S	BU-54214-08-08-S
-10	-10	7/8-18	1/2	BU-54213-10-10-S	BU-54215-10-10-S	BU-54214-10-10-S
-10	-12	7/8-18	5/8	BU-54213-10-12-S	BU-54215-10-12-S	BU-54214-10-12-S
-12	-10	1.1/16-16	1/2	BU-54213-12-10-S	-	-
-12	-12	1.1/16-16	5/8	BU-54213-12-12-S	BU-54215-12-12-S	BU-54214-12-12-S
-12	-14	1.1/16-16	3/4	BU-54213-12-14-S	BU-54215-12-14-S	BU-54214-12-14-S
-12	-16	1.1/16-16	7/8	BU-54213-12-16-S	BU-54215-12-16-S	BU-54214-12-16-S

BURGACLIP - tube connection fitting with UNF male thread with a R134 valve



fitting connection size	hose dash	thread [inch]	hose I.D. [inch]	valve size	straight	45°	90°
					code	code	code
-06	-06	5/8-18	5/16	16	-	-	BU-54217-06-06-S
-08	-08	3/4-18	13/32	16	-	-	BU-54217-08-08-S
-10	-10	7/8-18	1/2	13	-	-	BU-54217-10-10-S
-12	-12	1.1/16-16	5/8	13	-	-	BU-54217-12-12-S
-12	-14	1.1/16-16	3/4	13	-	-	BU-54217-12-14-S
-12	-16	1.1/16-16	7/8	13	-	-	BU-54217-12-16-S

BURGACLIP - tube connection fitting with UNF male thread, male insert



fitting connection size	hose dash	thread [inch]	hose I.D. [inch]	straight	45°	90°
				code	code	code
-06	-60	5/8-18	5/16	BU-54206-06-06-S	BU-54207-06-06-S	BU-54208-06-06-S
-08	-08	3/4-16	13/32	BU-54206-08-08-S	BU-54207-08-08-S	BU-54208-08-08-S
-10	-10	7/8-14	1/2	BU-54206-10-10-S	BU-54207-10-10-S	BU-54208-10-10-S
-10	-12	7/8-14	5/8	BU-54206-10-12-S	-	-
-12	-12	1.1/16-14	5/8	BU-54206-12-12-S	BU-54207-12-12-S	BU-54208-12-12-S
-12	-14	1.1/16-14	3/4	BU-54206-12-14-S	BU-54207-12-14-S	BU-54208-12-14-S
-12	-16	1.1/16-14	7/8	BU-54206-12-16-S	BU-54207-12-16-S	BU-54208-12-16-S

# INDUSTRIAL HOSES - air-conditioning

## Fittings for air-conditioning rubber hoses - BURGACLIP

BURGACLIP - bulk head tube connection fitting with UNF male thread, male insert



fitting connection size	hose dash	thread [inch]	hose I.D. [inch]	straight	45°	90°
				code	code	code
-06	-06	5/8-18	5/16	BU-54758-06-06-S	BU-54760-06-06-S	BU-54759-06-06-S
-08	-08	3/4-16	13/32	BU-54758-08-08-S	BU-54760-08-08-S	BU-54759-08-08-S
-10	-10	7/8-14	1/2	BU-54758-10-10-S	BU-54760-10-10-S	BU-54759-10-10-S
-12	-12	1.1/16-14	5/8	BU-54758-12-12-S	BU-54760-12-12-S	BU-54759-12-12-S
-12	-14	1.1/16-14	3/4	BU-54758-12-14-S	BU-54760-12-14-S	BU-54759-12-14-S
-12	-16	1.1/16-14	7/8	BU-54758-12-16-S	BU-54760-12-16-S	BU-54759-12-16-S

BURGACLIP - connection fitting with UNF female thread, ORFS type, flat seal



fitting connection size	hose dash	thread [inch]	hose I.D. [inch]	straight	45°	90°
				code	code	code
-04	-06	9/16-18	5/16	BU-54501-04-06-S	BU-54502-04-06-S	BU-54503-04-06-S
-06	-06	11/16-16	5/16	BU-54501-06-06-S	BU-54502-06-06-S	BU-54503-06-06-S
-06	-08	11/16-16	13/32	-	-	BU-54503-06-08-S
-08	-08	13/16-16	13/32	BU-54501-08-08-S	BU-54502-08-08-S	BU-54503-08-08-S
-08	-10	13/16-16	1/2	-	-	BU-54503-08-10-S
-10	-10	1-14	1/2	BU-54501-10-10-S	BU-54502-10-10-S	BU-54503-10-10-S
-10	-12	1-14	5/8	-	BU-54502-10-12-S	-
-12	-12	1.3/16-12	5/8	BU-54501-12-12-S	BU-54502-12-12-S	BU-54503-12-12-S
-16	-16	1.7/16-12	7/8	BU-54501-16-16-S	BU-54502-16-16-S	BU-54503-16-16-S

BURGACLIP - connection fitting with BOCK flange (41.8 mm)



fitting connection size	hose dash	thread [inch]	hose I.D. [inch]	straight	45°	90°
				code	code	code
-16	-14	41.8	3/4	BU-54754-16-14-S	BU-54755-16-14-S	BU-54757-16-14-S
-16	-16	41.8	7/8	BU-54754-16-16-S	BU-54755-16-16-S	BU-54757-16-16-S

# INDUSTRIAL HOSES - air-conditioning

## Hand crimper for air-conditioning hoses



**TNT 250**



**TNT 8**

Crimping machines designed to assemble fittings on standard rubber hoses for air-conditioning systems in diameters: 5/16" (8 mm), 13/32" (10.3 mm), 1/2" (12.7 mm), 5/8" (16 mm). Using appropriate die sets, one can assemble fittings on standard hoses and hoses with reduced outside diameter. Heads of the crimping machines allow the hose to be pulled through them. This assembly solution makes crimping of the angular fittings particularly easy. TNT 250 - six dies crimp. Depending on a version crimping is performed manually with the help of a special key, by hydraulic pump that is manually or pneumatically operated.

TNT 8 - eight dies crimp. Depending on a version crimping is performed by a simple electric drill, by hydraulic pump that is manually or pneumatically operated.

code	description
PF-TNT250-B	Hand crimper, 6 die sets for standard and reduced O.D. hoses, lubricant, plastic calliper, tool case.
PF-TNT250-P	Hand crimper with manually operated hydraulic pump, 6 die sets for standard and reduced O.D. hoses, lubricant, plastic calliper, tool case.
PF-APT100	Pneumatically operated hydraulic pump (700 bar) - TNT 250.
PF-MPT100	Manually operated hydraulic pump.
PF-UHT100	Hydraulic actuator 5.6 T with 1.8 m hose (700 bar).
PF-HCT100	Hydraulic actuator 5.6 T.
PF-HET100	1.8 m hose (700 bar).
PF-TNT8-MPT100MOSI	Hand crimper with hydraulic pump operated by an electrical drill, 6 die sets for standard and reduced O.D. hoses, tool case.
PF-TNT8-MPT10032SE	Hand crimper with manually operated hydraulic pump, 6 die sets for standard and reduced O.D. hoses, tool case.
PF-TNT8-UHTM	Hand crimper with hydraulic actuator with 1.8 m hose, 6 die sets for standard and reduced O.D. hoses, tool case.
PF-APT100-TNT8	Pneumatically operated hydraulic pump (300 bar) - TNT 8.



PF-TNT250-P



PF-APT100



PF-TNT8-MPT100MOSI

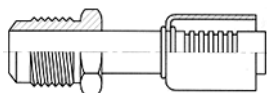


PF-TNT8-MPT10032SE

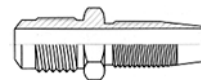
# INDUSTRIAL HOSES - air-conditioning

## Fittings for air-conditioning rubber hoses

SAE 45° male swivel, UNF thread



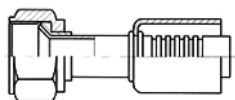
**52201**



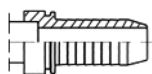
**51201**

fitting connection size	hose dash	thread [inch]	hose I.D. [inch]	valve size	crimping	crimping - LW hose	reusable
					code	code	code
-6	-6	5/8-18	5/16	-	BU-52201-06-06	-	BU-51201-06-06
-6	-8	5/8-18	13/32	-	BU-52201-06-08	-	BU-51201-06-08
-8	-8	3/4-16	13/32	-	BU-52201-08-08	-	BU-51201-08-08
-10	-8	7/8-14	13/32	-	BU-52201-10-08	-	BU-51201-10-08
-10	-10	7/8-14	1/2	-	BU-52201-10-10	-	BU-51201-10-10
-10	-12	7/8-14	5/8	-	BU-52201-10-12	-	-
-12	-12	1.1/16-14	5/8	-	BU-52201-12-12	-	BU-51201-12-12

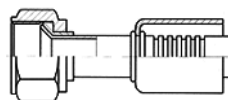
SAE 45° female swivel, UNF thread



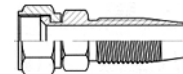
**52701**



**(52701)**



**53701**



**51701**

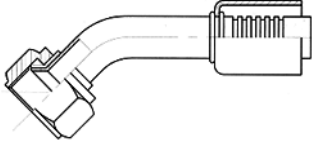
fitting connection size	hose dash	thread [inch]	hose I.D. [inch]	valve size	crimping	crimping - LW hose	reusable
					code	code	code
-4	-4	7/16-20	3/16	-	-	-	BU-51701-04-04
-4	-6	7/16-20	5/16	-	BU-52701-04-06	BU-53701-04-06	BU-51701-04-06
-6	-6	5/8-18	5/16	-	BU-52701-06-06*	BU-53701-06-06*	BU-51701-06-06
-6	-8	5/8-18	13/32	-	BU-52701-06-08	BU-53701-06-08	BU-51701-06-08
-8	-6	3/4-16	5/16	-	BU-52701-08-06	BU-53701-08-06	BU-51701-08-06
-8	-8	3/4-16	13/32	-	BU-52701-08-08*	BU-53701-08-08*	BU-51701-08-08
-8	-10	3/4-16	1/2	-	BU-52701-08-10	BU-53701-08-10	BU-51701-08-10
-10	-8	7/8-14	13/32	-	BU-52701-10-08	-	BU-51701-10-08
-10	-10	7/8-14	1/2	-	BU-52701-10-10*	BU-53701-10-10*	BU-51701-10-10
-10	-12	7/8-14	5/8	-	BU-52701-10-12	-	BU-51701-10-12
-12	-12	1.1/16-14	5/8	-	BU-52701-12-12*	BU-53701-12-12*	BU-51701-12-12
-16	-16	1.5/16-12	7/8	-	(BU-52701-16-16**)	-	BU-51701-16-16**
-20	-16	1.5/8-12	7/8	-	(BU-52701-20-16**)	-	-
-20	-20	1.5/8-12	1.1/8	-	(BU-52701-20-20**)	-	BU-51701-20-20**

\* - for all steel version add „S” to the part code: \*\* -cone 37°

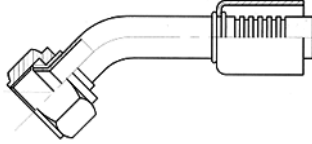
# INDUSTRIAL HOSES - air-conditioning

## Fittings for air-conditioning rubber hoses

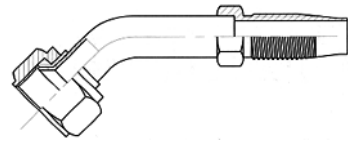
45° elbow, SAE 45° female swivel, UNF thread



**52702**



**53702**

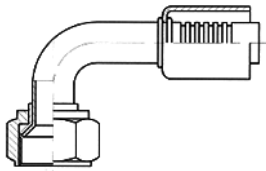


**51702**

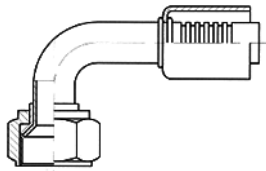
fitting connection size	hose dash	thread [inch]	hose I.D. [inch]	valve size	crimping	crimping - LW hose	reusable
					code	code	code
-4	-4	7/16-20	3/16	-	-	-	BU-51702-04-04
-4	-6	7/16-20	5/16	-	BU-52702-04-06	BU-53702-04-06	BU-51702-04-06
-6	-6	5/8-18	5/16	-	BU-52702-06-06*	BU-53702-06-06*	BU-51702-06-06
-6	-8	5/8-18	13/32	-	BU-52702-06-08	-	-
-8	-6	3/4-16	5/16	-	BU-52702-08-06	-	-
-8	-8	3/4-16	13/32	-	BU-52702-08-08*	BU-53702-08-08*	BU-51702-08-08
-8	-10	3/4-16	1/2	-	BU-52702-08-10	-	-
-10	-8	7/8-14	13/32	-	BU-52702-10-08	-	BU-51702-10-08
-10	-10	7/8-14	1/2	-	BU-52702-10-10*	BU-53702-10-10*	BU-51702-10-10
-10	-12	7/8-14	5/8	-	BU-52702-10-12	-	BU-51702-10-12
-12	-12	1.1/16-14	5/8	-	BU-52702-12-12*	-	BU-51702-12-12
-16	-16	1.5/16-12	7/8	-	-	-	BU-51702-16-16**
-20	-20	1.5/8-12	1.1/8	-	-	-	BU-51702-20-20**

\* - for all steel version add „S” to the part code: \*\* - cone 37°

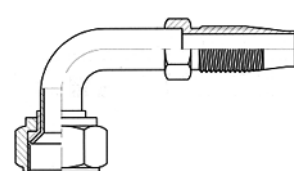
90° elbow, SAE 45° female swivel, UNF thread



**52703**



**53703**



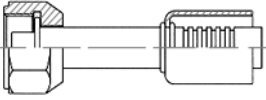
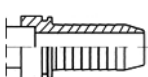
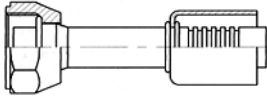
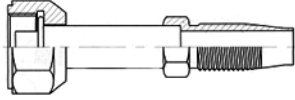
**51703**

fitting connection size	hose dash	thread [inch]	hose I.D. [inch]	valve size	crimping	crimping - LW hose	reusable
					code	code	code
-4	-4	7/16-20	3/16	-	-	-	BU-51703-04-04
-4	-6	7/16-20	5/16	-	BU-52703-04-06	BU-53703-04-06	BU-51703-04-06
-6	-6	5/8-18	5/16	-	BU-52703-06-06*	BU-53703-06-06*	BU-51703-06-06
-6	-8	5/8-18	13/32	-	BU-52703-06-08	-	-
-8	-6	3/4-16	5/16	-	BU-52703-08-06	BU-53703-08-06	BU-51703-08-06
-8	-8	3/4-16	13/32	-	BU-52703-08-08*	BU-53703-08-08*	BU-51703-08-08
-8	-10	3/4-16	1/2	-	BU-52703-08-10	BU-53703-08-10	BU-51703-08-10
-10	-8	7/8-14	13/32	-	BU-52703-10-08	-	BU-51703-10-08
-10	-10	7/8-14	1/2	-	BU-52703-10-10*	BU-53703-10-10*	BU-51703-10-10
-10	-12	7/8-14	5/8	-	BU-52703-10-12*	-	BU-51703-10-12
-12	-12	1.1/16-14	5/8	-	BU-52703-12-12*	-	BU-51703-12-12
-16	-16	1.5/16-12	7/8	-	-	-	BU-51703-16-16**
-20	-20	1.5/8-12	1.1/8	-	-	-	BU-51703-20-20**

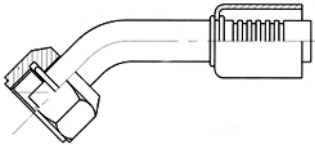
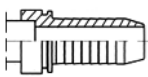
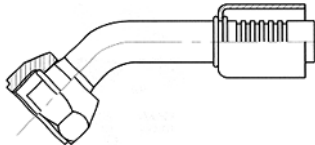
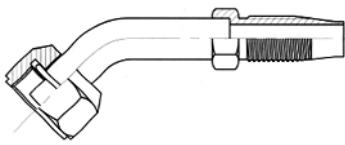
\* - for all steel version add „S” to the part code: \*\* - cone 37°

# INDUSTRIAL HOSES - air-conditioning

## Fittings for air-conditioning rubber hoses

O-ring pilot female swivel, UNF thread							
							
<b>52704</b>		<b>(52705)</b>		<b>53704</b>		<b>51704</b>	
fitting connection size	hose dash	thread [inch]	hose I.D. [inch]	valve size	crimping	crimping - LW hose	reusable
					code	code	code
-5	-6	9/16-18	5/16	-	BU-52704-05-06*	-	BU-51704-05-06
-6	-6	5/8-18	5/16	-	BU-52704-06-06*	BU-53704-06-06*	BU-51704-06-06
-6	-8	5/8-18	13/32	-	BU-52704-06-08	BU-53704-06-08-S	BU-51704-06-08
-8	-6	3/4-16	5/16	-	BU-52704-08-06*	BU-53704-08-06	BU-51704-08-06
-8	-8	3/4-16	13/32	-	BU-52704-08-08*	BU-53704-08-08*	BU-51704-08-08
-8	-10	3/4-16	1/2	-	BU-52704-08-10*	BU-53704-08-10*	BU-51704-08-10
-10	-6	7/8-14	5/16	-	-	-	BU-51704-10-06
-10	-8	7/8-14	13/32	-	-	BU-53704-10-08-S	BU-51704-10-08
-10	-10	7/8-14	1/2	-	BU-52704-10-10*	BU-53704-10-10*	BU-51704-10-10
-10	-12	7/8-14	5/8	-	BU-52704-10-12*	BU-53704-10-12*	BU-51704-10-12
-12	-10	1.1/16-14	1/2	-	BU-52704-12-10*	-	BU-51704-12-10
-12	-12	1.1/16-14	5/8	-	BU-52704-12-12*	BU-53704-12-12*	BU-51704-12-12
-12	-16	1.1/16-14	7/8	-	(BU-52704-12-16-S)	-	BU-51704-12-16
-12	-20	1.1/16-14	1.1/8	-	-	-	BU-51704-12-20

\* - for all steel version add „S” to the part code

45° elbow, O-ring pilot female swivel, UNF thread							
							
<b>52705</b>		<b>(52705)</b>		<b>53705</b>		<b>51705</b>	
fitting connection size	hose dash	thread [inch]	hose I.D. [inch]	valve size	crimping	crimping - LW hose	reusable
					code	code	code
-5	-6	9/16-18	5/16	-	BU-52705-05-06*	-	BU-51705-05-06
-6	-6	5/8-18	5/16	-	BU-52705-06-06*	BU-53705-06-06*	BU-51705-06-06
-6	-8	5/8-18	13/32	-	BU-52705-06-08	-	-
-8	-6	3/4-16	5/16	-	-	-	BU-51705-08-06
-8	-8	3/4-16	13/32	-	BU-52705-08-08*	BU-53705-08-08*	BU-51705-08-08
-8	-10	3/4-16	1/2	-	BU-52705-08-10	BU-53705-08-10-S	-
-10	-10	7/8-14	1/2	-	BU-52705-10-10*	BU-53705-10-10*	BU-51705-10-10
-10	-12	7/8-14	5/8	-	BU-52705-10-12*	BU-53705-10-12*	BU-51705-10-12
-12	-10	1.1/16-14	1/2	-	BU-52705-12-10*	-	BU-51705-12-10
-12	-12	1.1/16-14	5/8	-	BU-52705-12-12*	BU-53705-12-12*	BU-51705-12-12
-12	-16	1.1/16-14	7/8	-	(BU-52705-12-16-S)	-	-

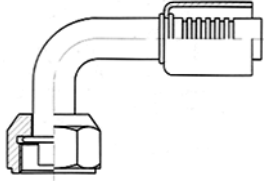
\* - for all steel version add „S” to the part code



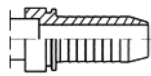
# INDUSTRIAL HOSES - air-conditioning

## Fittings for air-conditioning rubber hoses

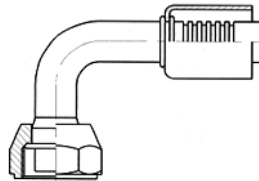
90° elbow, O-ring pilot female swivel, UNF thread



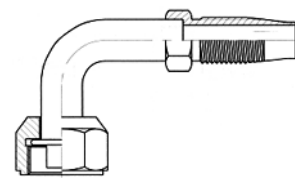
**52706**



**(52706)**



**53706**

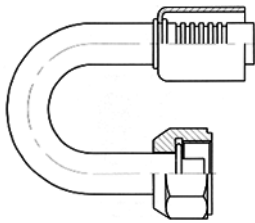


**51706**

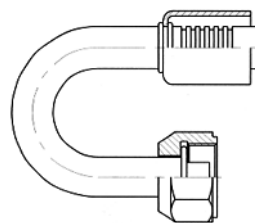
fitting connection size	hose dash	thread [inch]	hose I.D. [inch]	valve size	crimping	crimping - LW hose	reusable
					code	code	code
-5	-6	9/16-18	5/16	-	BU-52706-05-06*	-	BU-51706-05-06
-6	-6	5/8-18	5/16	-	BU-52706-06-06*	BU-53706-06-06*	BU-51706-06-06
-6	-8	5/8-18	13/32	-	BU-52706-06-08*	BU-53706-06-08*	BU-51706-06-08
-8	-6	3/4-16	5/16	-	BU-52706-08-06*	BU-53706-08-06	BU-51706-08-06
-8	-8	3/4-16	13/32	-	BU-52706-08-08*	BU-53706-08-08*	BU-51706-08-08
-8	-10	3/4-16	1/2	-	BU-52706-08-10*	BU-53706-08-10*	BU-51706-08-10
-10	-6	7/8-14	5/16	-	-	-	BU-51706-10-06
-10	-8	7/8-14	13/32	-	-	BU-53706-10-08-S	BU-51706-10-08
-10	-10	7/8-14	1/2	-	BU-52706-10-10*	BU-53706-10-10*	BU-51706-10-10
-10	-12	7/8-14	5/8	-	BU-52706-10-12*	BU-53706-10-12*	BU-51706-10-12
-12	-10	1.1/16-14	1/2	-	BU-52706-12-10*	BU-53706-12-10-S	BU-51706-12-10
-12	-12	1.1/16-14	5/8	-	BU-52706-12-12*	BU-53706-12-12*	BU-51706-12-12
-12	-16	1.1/16-14	7/8	-	(BU-52706-12-16-S)	-	BU-51706-12-16
-12	-20	1.1/16-14	1.1/8	-	-	-	BU-51706-12-20

\*\* - for all steel version add „S” to the part code

180° elbow, O-ring pilot female swivel, UNF thread



**52771**



**53771**

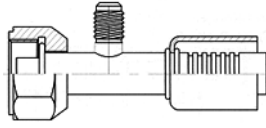
fitting connection size	hose dash	thread [inch]	hose I.D. [inch]	valve size	crimping	crimping - LW hose	reusable
					code	code	code
-6	-6	5/8-18	5/16	-	BU-52771-06-06*	BU-53771-06-06-S	-
-8	-8	3/4-16	13/32	-	BU-52771-08-08*	BU-53771-08-08-S	-
-10	-10	7/8-14	1/2	-	BU-52771-10-10*	BU-53771-10-10-S	-
-12	-12	1.1/16-14	5/8	-	BU-52771-12-12*	BU-53771-12-12-S	-

\*\* - for all steel version add „S” to the part code

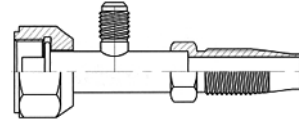
# INDUSTRIAL HOSES - air-conditioning

## Fittings for air-conditioning rubber hoses

O-ring pilot female swivel, UNF thread, R12 valve



**52710**

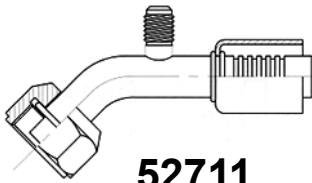


**51710**

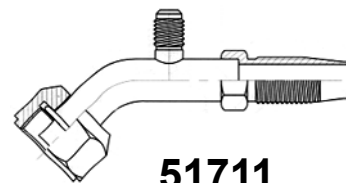
fitting connection size	hose dash	thread [inch]	hose I.D. [inch]	valve size	crimping	crimping - LW hose	reusable
					code	code	code
-6	-6	5/8-18	5/16	1/4	BU-52710-06-06*	-	BU-51710-06-06
-8	-8	3/4-16	13/32	1/4	BU-52710-08-08*	-	BU-51710-08-08
-8	-10	3/4-16	1/2	1/4	-	-	BU-51710-08-10
-10	-8	7/8-14	13/32	1/4	-	-	BU-51710-10-08
-10	-10	7/8-14	1/2	1/4	BU-52710-10-10*	-	BU-51710-10-10
-10	-12	7/8-14	5/8	1/4	-	-	BU-51710-10-12
-12	-12	1.1/16-14	5/8	1/4	BU-52710-12-12	-	BU-51710-12-12

\*\* - for all steel version add „S” to the part number

45° elbow, O-ring pilot female swivel, UNF thread, R12 valve



**52711**

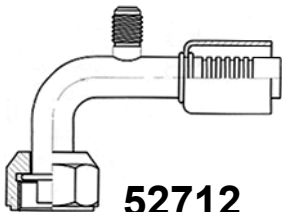


**51711**

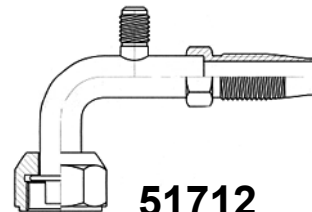
fitting connection size	hose dash	thread [inch]	hose I.D. [inch]	valve size	crimping	crimping - LW hose	reusable
					code	code	code
-6	-6	5/8-18	5/16	1/4	BU-52711-06-06*	-	BU-51711-06-06
-8	-8	3/4-16	13/32	1/4	BU-52711-08-08	-	BU-51711-08-08
-10	-10	7/8-14	1/2	1/4	BU-52711-10-10	-	BU-51711-10-10
-10	-12	7/8-14	5/8	1/4	BU-52711-10-12	-	BU-51711-10-12
-12	-12	1.1/16-14	5/8	1/4	BU-52711-12-12	-	BU-51711-12-12

\* - for all steel version add „S” to the part code

90° elbow, O-ring pilot female swivel, UNF thread, R12 valve



**52712**



**51712**

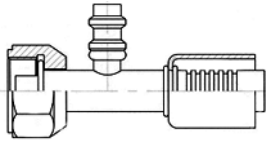
fitting connection size	hose dash	thread [inch]	hose I.D. [inch]	valve size [inch]	crimping	crimping - LW hose	reusable
					code	code	code
-6	-6	5/8-18	5/16	1/4	BU-52712-06-06*	-	BU-51712-06-06
-8	-6	3/4-16	5/16	1/4	BU-52712-08-06	-	-
-8	-8	3/4-16	13/32	1/4	BU-52712-08-08*	-	BU-51712-08-08
-10	-10	7/8-14	1/2	1/4	BU-52712-10-10*	-	BU-51712-10-10
-10	-12	7/8-14	5/8	1/4	BU-52712-10-12	-	BU-51712-10-12
-12	-12	1.1/16-14	5/8	1/4	-	-	BU-51712-12-12

\*\* - for all steel version add „S” to the part code

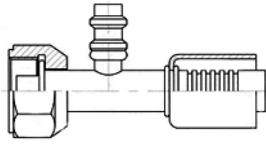
# INDUSTRIAL HOSES - air-conditioning

## Fittings for air-conditioning rubber hoses

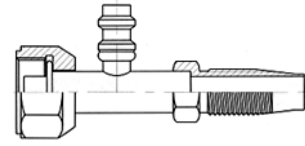
O-ring pilot female swivel, UNF thread, R134 valve



**52717**



**53717**

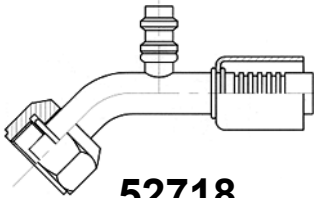


**51717**

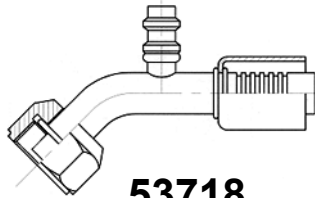
fitting connection size	hose dash	thread [inch]	hose I.D. [inch]	valve size [mm]	crimping	crimping - LW hose	reusable
					code	code	code
-6	-6	5/8-18	5/16	16	BU-52717-06-06*	BU-53717-06-06*	BU-51717-06-06
-8	-8	3/4-16	13/32	16	BU-52717-08-08*	BU-53717-08-08*	BU-51717-08-08
-8	-10	3/4-16	1/2	16	-	-	BU-51717-08-10
-10	-10	7/8-14	1/2	13	BU-52717-10-10*	BU-53717-10-10*	BU-51717-10-10
-10	-12	7/8-14	5/8	13	BU-52717-10-12*	BU-53717-10-12*	BU-51717-10-12
-12	-12	1.1/16-14	5/8	13	BU-52717-12-12*	BU-53717-12-12	BU-51717-12-12

\*\* - for all steel version add „S” to the part code

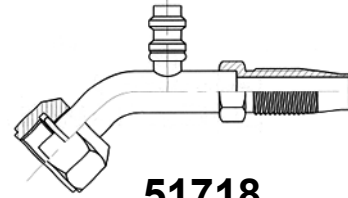
45° elbow, O-ring pilot female swivel, UNF thread, R134 valve



**52718**



**53718**

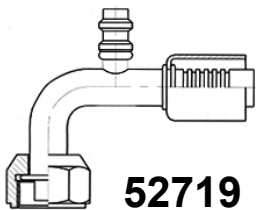


**51718**

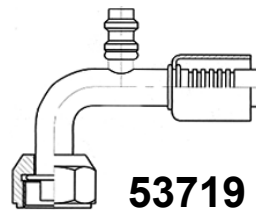
fitting connection size	hose dash	thread [inch]	hose I.D. [inch]	valve size [mm]	crimping	crimping - LW hose	reusable
					code	code	code
-6	-6	5/8-18	5/16	16	BU-52718-06-06*	-	BU-51718-06-06
-8	-8	3/4-16	13/32	16	BU-52718-08-08*	BU-53718-08-08*	BU-51718-08-08
-10	-10	7/8-14	1/2	13	BU-52718-10-10*	BU-53718-10-10*	BU-51718-10-10
-10	-12	7/8-14	5/8	13	BU-52718-10-12*	-	BU-51718-10-12
-12	-12	1.1/16-14	5/8	13	BU-52718-12-12*	-	BU-51718-12-12

\*\* - for all steel version add „S” to the part code

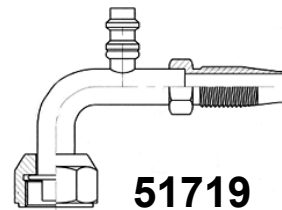
9° elbow, O-ring pilot female swivel, UNF thread, R134 valve



**52719**



**53719**



**51719**

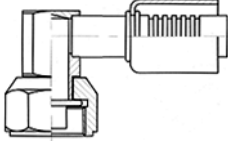
fitting connection size	hose dash	thread [inch]	hose I.D. [inch]	valve size [mm]	crimping	crimping - LW hose	reusable
					code	code	code
-6	-6	5/8-18	5/16	16	BU-52719-06-06*	BU-53719-06-06*	BU-51719-06-06
-6	-8	5/8-18	13/32	16	-	-	BU-51719-06-08
-8	-8	3/4-16	13/32	16	BU-52719-08-08*	BU-53719-08-08*	BU-51719-08-08
-8	-10	3/4-16	1/2	16	-	-	BU-51719-08-10
-8	-12	3/4-16	5/8	16	-	-	BU-51719-08-12
-10	-08	7/8-14	13/32	13	-	-	BU-51719-10-08
-10	-10	7/8-14	1/2	13	BU-52719-10-10*	BU-53719-10-10*	BU-51719-10-10
-10	-12	7/8-14	5/8	13	BU-52719-10-12*	BU-53719-10-12*	BU-51719-10-12
-12	-12	1.1/16-14	5/8	13	BU-52719-12-12*	-	BU-51719-12-12
-12	-16	1.1/16-14	7/8	13	-	-	BU-51719-12-16

\*\* - for all steel version add „S” to the part code

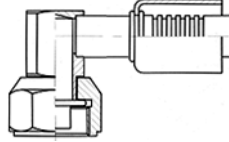
# INDUSTRIAL HOSES - air-conditioning

## Fittings for air-conditioning rubber hoses

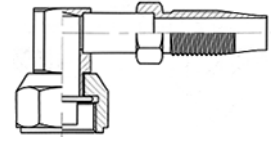
90° elbow, block type, O-ring pilot female swivel, UNF thread



**52740**



**53740**

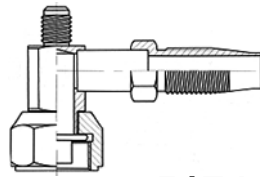


**51740**

fitting connection size	hose dash	thread [inch]	hose I.D. [inch]	valve size	crimping	crimping - LW hose	reusable
					code	code	code
-6	-6	5/8-18	5/16	-	BU-52740-06-06-S	BU-53740-06-06-S	BU-51740-06-06
-8	-8	3/4-16	13/32	-	BU-52740-08-08-S	BU-53740-08-08-S	BU-51740-08-08
-10	-10	7/8-14	1/2	-	BU-52740-10-10-S	BU-53740-10-10-S	BU-51740-10-10
-10	-12	7/8-14	5/8	-	BU-52740-10-12-S	-	BU-51740-10-12
-12	-10	1.1/16-14	1/2	-	BU-52740-12-10-S	-	-
-12	-12	1.1/16-14	5/8	-	BU-52740-12-12-S	BU-53740-12-12-S	BU-51740-12-12

S -steel version

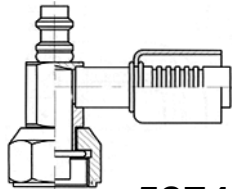
90° elbow, block type, O-ring pilot female swivel, UNF thread, R12 valve



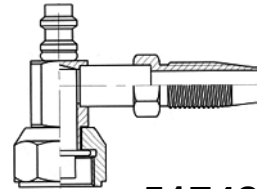
**51741**

fitting connection size	hose dash	thread [inch]	hose I.D. [inch]	valve size [inch]	crimping	crimping - LW hose	reusable
					code	code	code
-6	-6	5/8-18	5/16	1/4	-	-	BU-51741-06-06
-8	-8	3/4-16	13/32	1/4	-	-	BU-51741-08-08
-10	-10	7/8-14	1/2	1/4	-	-	BU-51741-10-10
-10	-12	7/8-14	5/8	1/4	-	-	BU-51741-10-12
-12	-12	1.1/16-14	5/8	1/4	-	-	BU-51741-12-12

90° elbow, block type, O-ring pilot female swivel, UNF thread, R134 valve



**52742**



**51742**

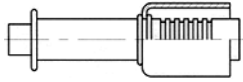
fitting connection size	hose dash	thread [inch]	hose I.D. [inch]	valve size [mm]	crimping	crimping - LW hose	reusable
					code	code	code
-6	-6	5/8-18	5/16	16	BU-52742-06-06-S	-	BU-51742-06-06
-8	-8	3/4-16	13/32	16	BU-52742-08-08-S	-	BU-51742-08-08
-10	-10	7/8-14	1/2	13	BU-52742-10-10-S	-	BU-51742-10-10
-10	-12	7/8-14	5/8	13	-	-	BU-51742-10-12
-12	-12	1.1/16-14	5/8	13	BU-52742-12-12-S	-	BU-51742-12-12

S -steel version

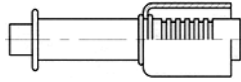
# INDUSTRIAL HOSES - air-conditioning

## Fittings for air-conditioning rubber hoses

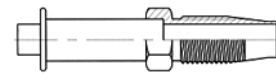
O-ring pilot, without nut



**52724**



**53724**

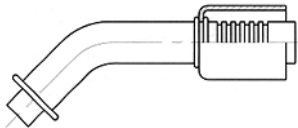


**51724**

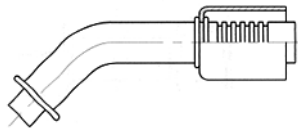
fitting connection size	hose dash	tube size	hose I.D. [inch]	valve size	crimping	crimping - LW hose	reusable
					code	code	code
-6	-6	8.5	5/16	-	BU-52724-06-06*	BU-53724-06-06*	BU-51724-06-06
-8	-6	11.6	5/16	-	BU-52724-08-06*	BU-53724-08-06	BU-51724-08-06
-8	-8	11.6	13/32	-	BU-52724-08-08*	BU-53724-08-08	BU-51724-08-08
-10	-10	14.4	1/2	-	BU-52724-10-10*	BU-53724-10-10	BU-51724-10-10
-12	-10	17.5	1/2	-	BU-52724-12-10	BU-53724-12-10*	BU-51724-12-10
-12	-12	17.5	5/8	-	BU-52724-12-12*	BU-53724-12-12	BU-51724-12-12

\* - for all steel version add „S” to the part code

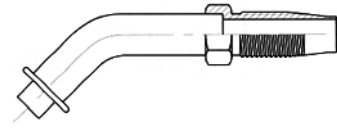
45° elbow. O-ring pilot, without nut



**52725**



**53725**

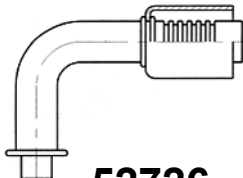


**51725**

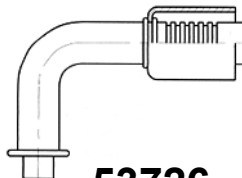
fitting connection size	hose dash	tube size	hose I.D. [inch]	valve size	crimping	crimping - LW hose	reusable
					code	code	code
-6	-6	8.5	5/16	-	BU-52725-06-06*	BU-53725-06-06*	BU-51725-06-06
-8	-6	11.6	5/16	-	BU-52725-08-06	BU-53725-08-06	BU-51725-08-06
-8	-8	11.6	13/32	-	BU-52725-08-08*	BU-53725-08-08	BU-51725-08-08
-12	-10	17.5	1/2	-	BU-52725-12-10*	BU-53725-12-10S	BU-51725-12-10
-12	-12	17.5	5/8	-	-	-	BU-51725-12-12

\* - for all steel version add „S” to the part code

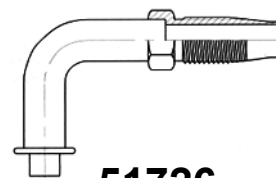
90° elbow. O-ring pilot, without nut



**52726**



**53726**



**51726**

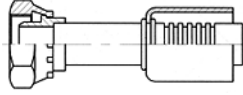
fitting connection size	hose dash	tube size	hose I.D. [inch]	valve size	crimping	crimping - LW hose	reusable
					code	code	code
-6	-6	8.5	5/16	-	BU-52726-06-06*	BU-53726-06-06*	BU-51726-06-06
-8	-6	11.6	5/16	-	BU-52726-08-06*	BU-53726-08-06	BU-51726-08-06
-8	-8	11.6	13/32	-	BU-52726-08-08*	-	BU-51726-08-08
-10	-10	14.4	1/2	-	BU-52726-10-10	-	-
-12	-10	17.5	1/2	-	BU-52726-12-10*	BU-53726-12-10*	BU-51726-12-10
-12	-12	17.5	5/8	-	BU-52726-12-12*	-	BU-51726-12-12

\* - for all steel version add „S” to the part code

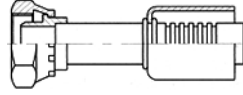
# INDUSTRIAL HOSES - air-conditioning

## Fittings for air-conditioning rubber hoses

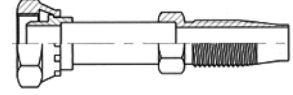
Compressor fitting female swivel, UNF thread



**52707**



**53707**

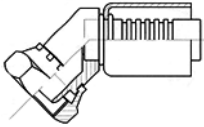


**51707**

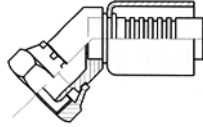
fitting connection size	hose dash	thread [inch]	hose I.D. [inch]	valve size	crimping	crimping - LW hose	reusable
					code	code	code
-10	-8	1-14	13/32	-	BU-52707-10-08*	BU-53707-10-08	BU-51707-10-08
-10	-10	1-14	1/2	-	BU-52707-10-10*	BU-53707-10-10	BU-51707-10-10
-10	-12	1-14	5/8	-	BU-52707-10-12*	BU-53707-10-12*	BU-51707-10-12

\* -for all steel version add „S” to the part code

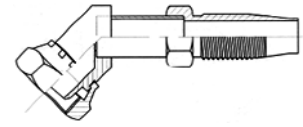
45° elbow, compressor fitting female swivel, UNF thread



**52708**



**53708**

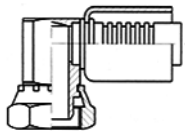


**51708**

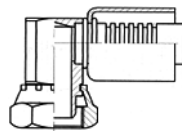
fitting connection size	hose dash	thread [inch]	hose I.D. [inch]	valve size	crimping	crimping - LW hose	reusable
					code	code	code
-10	-8	1-14	13/32	-	BU-52708-10-08*	BU-53708-10-08	BU-51708-10-08
-10	-10	1-14	1/2	-	BU-52708-10-10*	BU-53708-10-10	BU-51708-10-10
-10	-12	1-14	5/8	-	BU-52708-10-12*	BU-53708-10-12	BU-51708-10-12

\* -for all steel version add „S” to the part code

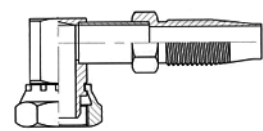
90° elbow, compressor fitting female swivel, UNF thread



**52709**



**53709**



**51709**

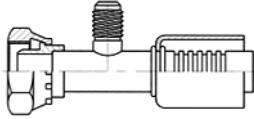
fitting connection size	hose dash	thread [inch]	hose I.D. [inch]	valve size	crimping	crimping - LW hose	reusable
					code	code	code
-10	-8	1-14	13/32	-	BU-52709-10-08*	BU-53709-10-08*	BU-51709-10-08
-10	-10	1-14	1/2	-	BU-52709-10-10*	BU-53709-10-10*	BU-51709-10-10
-10	-12	1-14	5/8	-	BU-52709-10-12*	BU-53709-10-12	BU-51709-10-12

\* -for all steel version add „S” to the part code

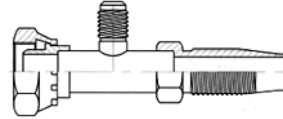
# INDUSTRIAL HOSES - air-conditioning

## Fittings for air-conditioning rubber hoses

Compressor fitting female swivel, UNF thread, R12 valve



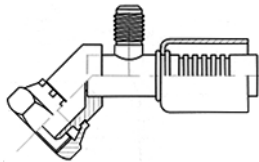
**52730**



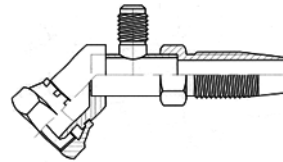
**51730**

fitting connection size	hose dash	thread [inch]	hose I.D. [inch]	valve size [inch]	crimping	crimping - LW hose	reusable
					code	code	code
-10	-8	1-14	13/32	1/4	BU-52730-10-08	-	BU-51730-10-08
-10	-10	1-14	1/2	1/4	BU-52730-10-10	-	BU-51730-10-10
-10	-12	1-14	5/8	1/4	-	-	BU-51730-10-12

45° elbow, compressor fitting female swivel, UNF thread, R12 valve



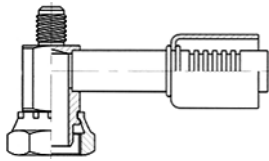
**52731**



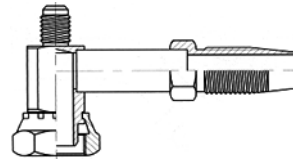
**51731**

fitting connection size	hose dash	thread [inch]	hose I.D. [inch]	valve size [inch]	crimping	crimping - LW hose	reusable
					code	code	code
-10	-8	1-14	13/32	1/4	BU-52731-10-08	-	BU-51731-10-08
-10	-10	1-14	1/2	1/4	BU-52731-10-10	-	BU-51731-10-10
-10	-12	1-14	5/8	1/4	-	-	BU-51731-10-12

90° elbow, compressor fitting female swivel, UNF thread, R12 valve



**52732**



**51732**

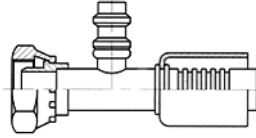
fitting connection size	hose dash	thread [inch]	hose I.D. [inch]	valve size [inch]	crimping	crimping - LW hose	reusable
					code	code	code
-10	-8	1-14	13/32	1/4	BU-52732-10-08-S	-	BU-51732-10-08
-10	-10	1-14	1/2	1/4	BU-52732-10-10-S	-	BU-51732-10-10
-10	-12	1-14	5/8	1/4	BU-52732-10-12-S	-	BU-51732-10-12

S - steel version

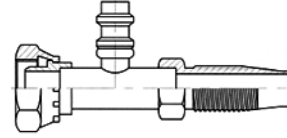
# INDUSTRIAL HOSES - air-conditioning

## Fittings for air-conditioning rubber hoses

Compressor fitting female swivel, UNF thread, R134 valve



**52733**

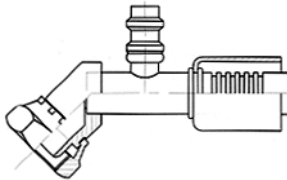


**51733**

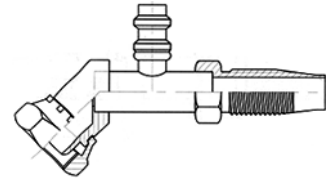
fitting connection size	hose dash	thread [inch]	hose I.D. [inch]	valve size [mm]	crimping	crimping - LW hose	reusable
					code	code	code
- 10	- 8	1-14	13/32	16	BU-52733-10-08*	-	BU-51733-10-08
- 10	- 10	1-14	1/2	13	BU-52733-10-10*	-	BU-51733-10-10
- 10	- 12	1-14	5/8	13	BU-52733-10-12*	-	BU-51733-10-12

\* - for all steel version add „S” to the part code

45° elbow, compressor fitting female swivel, UNF thread, R134 valve



**52734**

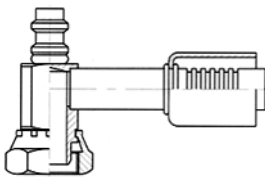


**51734**

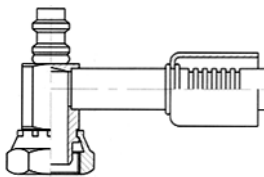
fitting connection size	hose dash	thread [inch]	hose I.D. [inch]	valve size [mm]	crimping	crimping - LW hose	reusable
					code	code	code
- 10	-8	1-14	13/32	16	BU-52734-10-08*	-	BU-51734-10-08
- 10	-10	1-14	1/2	13	BU-52734-10-10*	-	BU-51734-10-10
- 10	-12	1-14	5/8	13	BU-52734-10-12*	-	BU-51734-10-12

\*\* - for all steel version add „S” to the part code

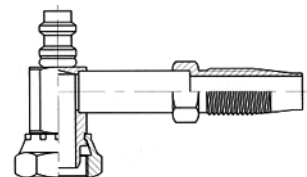
90° elbow, compressor fitting female swivel, UNF thread, R134 valve



**52735**



**53735**



**51735**

fitting connection size	hose dash	thread [inch]	hose I.D. [inch]	valve size [mm]	crimping	crimping - LW hose	reusable
					code	code	code
- 10	-8	1-14	13/32	16	BU-52735-10-08*	BU-53735-10-08-S	BU-51735-10-08
- 10	-10	1-14	1/2	13	BU-52735-10-10*	BU-53735-10-10-S	BU-51735-10-10
- 10	-12	1-14	5/8	13	BU-52735-10-12*	BU-53735-10-12-S	BU-51735-10-12

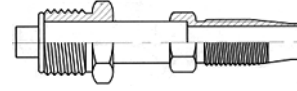
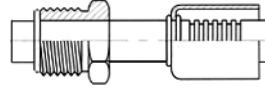
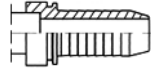
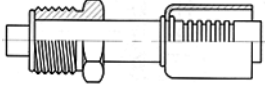
\* - for all steel version add „S” to the part code



# INDUSTRIAL HOSES - air-conditioning

## Fittings for air-conditioning rubber hoses

O-ring pilot male swivel, UNF thread



**52213**

**(52213)**

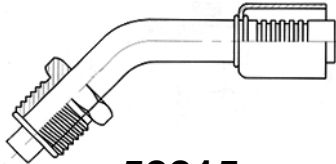
**53213**

**51213**

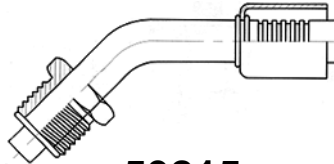
fitting connection size	hose dash	thread [inch]	hose I.D. [inch]	valve size	crimping	crimping - LW hose	reusable
					code	code	code
-6	-6	5/8-18	5/16	-	BU-52213-06-06*	BU-53213-06-06*	BU-51213-06-06
-6	-8	5/8-18	13/32	-	BU-52213-06-08	-	-
-8	-6	3/4-18	5/16	-	BU-52213-08-06	-	-
-8	-8	3/4-18	13/32	-	BU-52213-08-08*	BU-53213-08-08*	BU-51213-08-08
-10	-10	7/8-18	1/2	-	BU-52213-10-10*	BU-53213-10-10*	BU-51213-10-10
-10	-12	7/8-18	5/8	-	BU-52213-10-12*	BU-53213-10-12*	BU-51213-10-12
-12	-12	1.1/16-16	5/8	-	BU-52213-12-12*	BU-53213-12-12*	BU-51213-12-12
-12	-16	1.1/16-16	7/8	-	(BU-52213-12-16-S)	-	-

\* - for all steel version add „S” to the part code

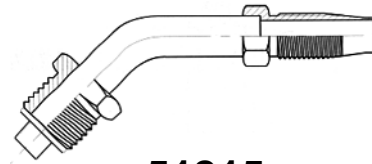
45° elbow, O-ring pilot male swivel, UNF thread



**52215**



**53215**



**51215**

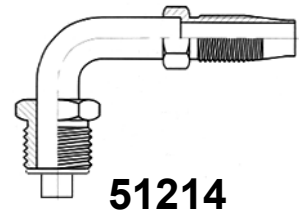
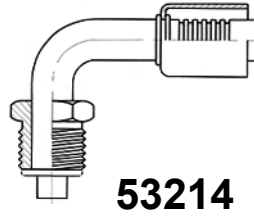
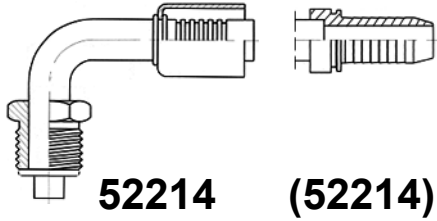
fitting connection size	hose dash	thread [inch]	hose I.D. [inch]	valve size	crimping	crimping - LW hose	reusable
					code	code	code
-6	-6	5/8-18	5/16	-	BU-52215-06-06*	BU-53215-06-06*	BU-51215-06-06
-6	-8	5/8-18	13/32	-	BU-52215-06-08	-	-
-8	-6	3/4-18	5/16	-	BU-52215-08-06	-	-
-8	-8	3/4-18	13/32	-	BU-52215-08-08*	BU-53215-08-08*	BU-51215-08-08
-10	-10	7/8-18	1/2	-	BU-52215-10-10*	BU-53215-10-10*	BU-51215-10-10
-10	-12	7/8-18	5/8	-	BU-52215-10-12	-	BU-51215-10-12
-12	-12	1.1/16-16	5/8	-	BU-52215-12-12*	BU-53215-12-12*	BU-51215-12-12
-12	-16	1.1/16-16	7/8	-	BU-52215-12-16	-	-

\* - for all steel version add „S” to the part code

# INDUSTRIAL HOSES - air-conditioning

## Fittings for air-conditioning rubber hoses

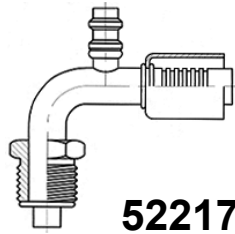
90° elbow, O-ring pilot male swivel, UNF thread



fitting connection size	hose dash	thread [inch]	hose I.D. [inch]	valve size	crimping	crimping - LW hose	reusable
					code	code	code
-6	-6	5/8-18	5/16	-	BU-52214-06-06*	BU-53214-06-06*	BU-51214-06-06
-6	-8	5/8-18	13/32	-	BU-52214-06-08	-	-
-8	-6	3/4-18	5/16	-	BU-52214-08-06	-	-
-8	-8	3/4-18	13/32	-	BU-52214-08-08*	BU-53214-08-08*	BU-51214-08-08
-10	-10	7/8-18	1/2	-	BU-52214-10-10*	BU-53214-10-10*	BU-51214-10-10
-10	-12	7/8-18	5/8	-	BU-52214-10-12	BU-53214-10-12*	BU-51214-10-12
-12	-12	1.1/16-16	5/8	-	BU-52214-12-12*	BU-53214-12-12	BU-51214-12-12
-12	-16	1.1/16-16	7/8	-	(BU-52214-12-16)	-	-

\* - for all steel version add „S” to the part code

90° elbow, O-ring pilot male swivel, UNF thread, R134 valve



fitting connection size	hose dash	thread [inch]	hose I.D. [inch]	valve size [mm]	crimping	crimping - LW hose	reusable
					code	code	code
-6	-6	5/8-18	5/16	16	BU-52217-06-06-S	-	-
-8	-8	3/4-18	13/32	16	BU-52217-08-08-S	-	-
-10	-10	7/8-18	1/2	13	BU-52217-10-10-S	-	-
-12	-12	1.1/16-16	5/8	13	BU-52217-12-12-S	-	-

S - steel version



before crimping

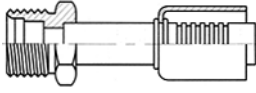


after crimping

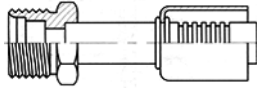
# INDUSTRIAL HOSES - air-conditioning

## Fittings for air-conditioning rubber hoses

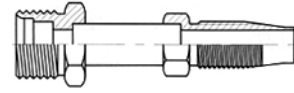
O-ring male, UNF thread



**52206**



**53206**

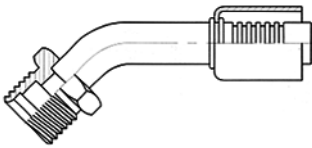


**51206**

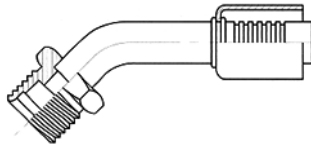
fitting connection size	hose dash	thread [inch]	hose I.D. [inch]	valve size	crimping	crimping - LW hose	reusable
					code	code	code
-6	-6	5/8-18	5/16	-	BU-52206-06-06*	BU-53206-06-06*	BU-51206-06-06
-8	-8	3/4-16	13/32	-	BU-52206-08-08*	BU-53206-08-08*	BU-51206-08-08
-10	-8	7/8-14	13/32	-	BU-52206-10-08-S	-	-
-10	-10	7/8-14	1/2	-	BU-52206-10-10*	BU-53206-10-10*	BU-51206-10-10
-10	-12	7/8-14	5/8	-	BU-52206-10-12-S	-	BU-51206-10-12
-12	-12	1.1/16-14	5/8	-	BU-52206-12-12*	BU-53206-12-12	BU-51206-12-12

\* - for all steel version add „S” to the part code

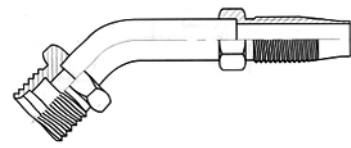
45° elbow, O-ring male, UNF thread



**52207**



**53207**

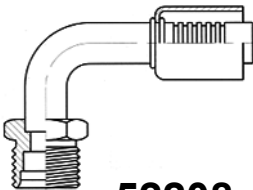


**51207**

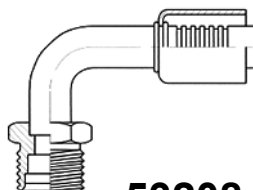
fitting connection size	hose dash	thread [inch]	hose I.D. [inch]	valve size	crimping	crimping - LW hose	reusable
					code	code	code
-6	-6	5/8-18	5/16	-	BU-52207-06-06*	BU-53207-06-06	BU-51207-06-06
-8	-8	3/4-16	13/32	-	BU-52207-08-08*	BU-53207-08-08	BU-51207-08-08
-10	-10	7/8-14	1/2	-	BU-52207-10-10*	BU-53207-10-10	BU-51207-10-10
-12	-12	1.1/16-14	5/8	-	BU-52207-12-12*	BU-53207-12-12	BU-51207-12-12

\* - for all steel version add „S” to the part code

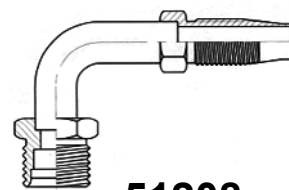
90° elbow, O-ring male, UNF thread



**52208**



**53208**



**51208**

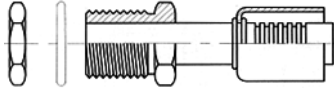
fitting connection size	hose dash	thread [inch]	hose I.D. [inch]	valve size	crimping	crimping - LW hose	reusable
					code	code	code
-6	-6	5/8-18	5/16	-	BU-52208-06-06*	BU-53208-06-06*	BU-51208-06-06
-8	-8	3/4-16	13/32	-	BU-52208-08-08*	BU-53208-08-08	BU-51208-08-08
-10	-10	7/8-14	1/2	-	BU-52208-10-10*	BU-53208-10-10*	BU-51208-10-10
-12	-12	1.1/16-14	5/8	-	BU-52208-12-12*	BU-53208-12-12*	BU-51208-12-12

\* - for all steel version add „S” to the part code

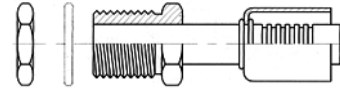
# INDUSTRIAL HOSES - air-conditioning

## Fittings for air-conditioning rubber hoses

O-ring male, bulkhead, UNF thread



**52758**

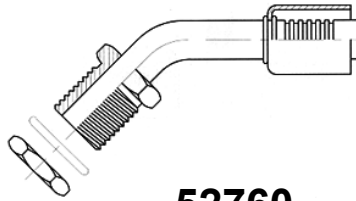


**53758**

fitting connection size	hose dash	thread [inch]	hose I.D. [inch]	valve size	crimping	crimping - LW hose	reusable
					code	code	
-6	-6	5/8-18	5/16	-	BU-52758-06-06*	BU-53758-06-06-S	-
-8	-8	3/4-16	13/32	-	BU-52758-08-08*	BU-53758-08-08-S	-
-10	-10	7/8-14	1/2	-	BU-52758-10-10*	BU-53758-10-10-S	-
-10	-12	7/8-14	5/8	-	BU-52758-10-12-S	-	-
-12	-12	1.1/16-14	5/8	-	BU-52758-12-12-S	-	-

\* - for all steel version add „S” to the part code

45° elbow, O-ring male, bulkhead, UNF thread

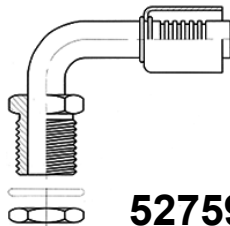


**52760**

fitting connection size	hose dash	thread [inch]	hose I.D. [inch]	valve size	crimping	crimping - LW hose	reusable
					code	code	
-6	-6	5/8-18	5/16	-	BU-52760-06-06-S	-	-
-8	-8	3/4-16	13/32	-	BU-52760-08-08-S	-	-
-10	-10	7/8-14	1/2	-	BU-52760-10-10-S	-	-

S - steel version

90° elbow, O-ring male, bulkhead, UNF thread



**52759**

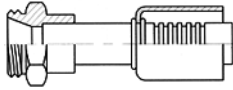
fitting connection size	hose dash	thread [inch]	hose I.D. [inch]	valve size	crimping	crimping - LW hose	reusable
					code	code	
-6	-6	5/8-18	5/16	-	BU-52759-06-06*	-	-
-8	-8	3/4-16	13/32	-	BU-52759-08-08*	-	-
-10	-10	7/8-14	1/2	-	BU-52759-10-10*	-	-

\* - for all steel version add „S” to the part code

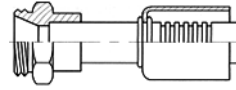
# INDUSTRIAL HOSES - air-conditioning

## Fittings for air-conditioning rubber hoses

### Quick disconnection male, UNF thread



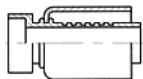
**52747**



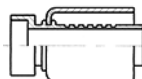
**53747**

fitting connection size	hose dash	thread [inch]	hose I.D. [inch]	valve size	crimping	crimping - LW hose	reusable
					code	code	code
-8	-6	7/8-20	5/16	-	BU-52747-08-06	BU-53747-08-06-S	-
-12	-10	1.1/4-18	1/2	-	BU-52747-12-10	BU-53747-12-10-S	-

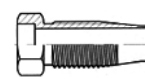
### Braze nipple



**52743**



**53743**

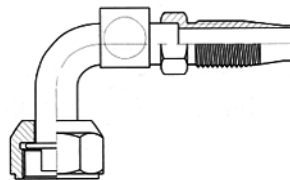


**51743**

fitting connection size	hose dash	thread [inch]	hose I.D. [inch]	valve size	crimping	crimping - LW hose	reusable
					code	code	code
-6	-6	3/8	5/16	-	BU-52743-06-06-S	BU-53743-06-06*	BU-51743-06-06
-8	-8	1/2	13/32	-	BU-52743-08-08-S	BU-53743-08-08*	BU-51743-08-08
-10	-10	5/8	1/2	-	BU-52743-10-10-S	BU-53743-10-10*	BU-51743-10-10
-12	-12	3/4	5/8	-	BU-52743-12-12-S	BU-53743-12-12*	BU-51743-12-12
-16	-16	1	7/8	-	-	-	BU-51743-16-16
-20	-20	1.1/4	1.1/8	-	-	-	BU-51743-20-20

\* \* - for all steel version add „S” to the part code

### 90° elbow, O-ring male, bulkhead, UNF thread



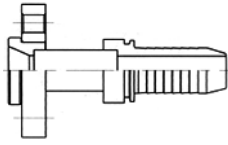
**51744**

fitting connection size	hose dash	thread [inch]	hose I.D. [inch]	valve size	crimping	crimping - LW hose	reusable
					code	code	code
-6	-6	5/8-18	5/16	-	-	-	BU-51744-06-06
-8	-8	3/4-16	13/32	-	-	-	BU-51744-08-08
-10	-10	7/8-14	1/2	-	-	-	BU-51744-10-10

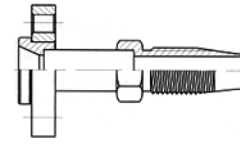
# INDUSTRIAL HOSES - air-conditioning

## Fittings for air-conditioning rubber hoses

BOCK flange connection (41.8 mm)



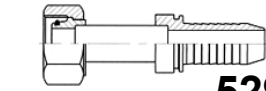
**52754**



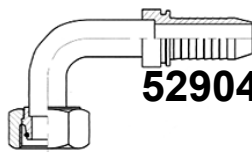
**51754**

fitting connection size	hose dash	connection size [mm]	hose ID [inch]	type	crimping	crimping - LW hose	reusable
					code	code	code
-16	-16	41.8	7/8	straight	BU-52754-16-16	-	BU-51754-16-16
-16	-20	41.8	1.1/8	straight	BU-52754-16-20	-	BU-51754-16-20
-16	-12	41.8	5/8	45°	-	-	BU-51755-16-12
-16	-16	41.8	7/8	45°	BU-52755-16-16	-	BU-51755-16-16
-16	-20	41.8	1.1/8	45°	BU-52755-16-20	-	BU-51755-16-20
-16	-12	41.8	5/8	90°	-	-	BU-51757-16-12
-16	-16	41.8	7/8	90°	BU-52757-16-16	-	BU-51757-16-16
-16	-20	41.8	1.1/8	90°	BU-52757-16-20	-	BU-51757-16-20

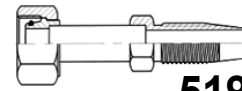
DIN 3865, cone 24°, light series, female swivel, metric thread



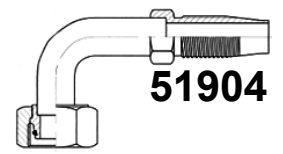
**52901**



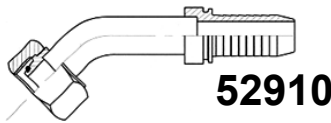
**52904**



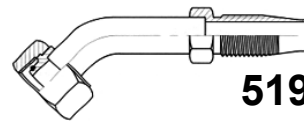
**51901**



**51904**



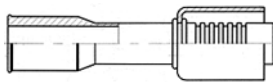
**52910**



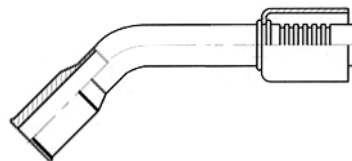
**51908**

fitting connection size	hose dash	thread [inch]	hose I.D. [inch]	type	crimping	crimping - LW hose	reusable
					code	code	code
-22	-16	M30x2	7/8	straight	BU-52901-22-16	-	BU-51901-22-16
-28	-20	M36x2	1.1/8	straight	BU-52901-28-20	-	BU-51901-28-20
-22	-16	M30x2	7/8	45°	BU-52910-22-16	-	BU-51908-22-16
-28	-20	M36x2	1.1/8	45°	BU-52910-28-20	-	BU-51908-28-20
-22	-16	M30x2	7/8	90°	BU-52904-22-16	-	BU-51904-22-16
-28	-20	M36x2	1.1/8	90°	BU-52904-28-20	-	BU-51904-28-20

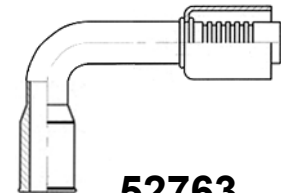
FORD female SPRINGLOCK



**52761**



**52762**



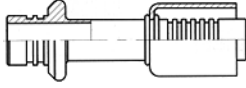
**52763**

fitting connection size	hose dash	socket size	hose I.D. [inch]	valve size	crimping	crimping - LW hose	reusable
					code	code	code
-6	-6	-	5/16	-	BU-52761-06-06	BU-52762-06-06	BU-52763-06-06
-8	-6	-	5/16	-	BU-52761-08-06	BU-52762-08-06	BU-52763-08-06
-8	-8	-	13/32	-	BU-52761-08-08	BU-52762-08-08	BU-52763-08-08
-10	-10	-	1/2	-	BU-52761-10-10	BU-52762-10-10	BU-52763-10-10
-10	-12	-	5/8	-	BU-52761-10-12	BU-52762-10-12	BU-52763-10-12
-12	-12	-	5/8	-	BU-52761-12-12	BU-52762-12-12	BU-52763-12-12

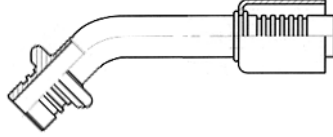
# INDUSTRIAL HOSES - air-conditioning

## Fittings for air-conditioning rubber hoses

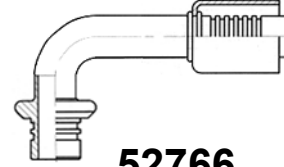
### FORD plug SPRINGLOCK



**52764**



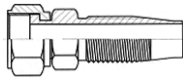
**52765**



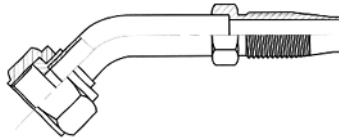
**52766**

fitting connection size	hose dash	plug size	hose I.D. [inch]	valve size	crimping	45° crimping	90° crimping
					code	code	code
-6	-6	-	5/16	-	BU-52764-06-06	BU-52765-06-06	BU-52766-06-06
-8	-6	-	5/16	-	BU-52764-08-06	BU-52765-08-06	BU-52766-08-06
-8	-8	-	13/32	-	BU-52764-08-08	BU-52765-08-08	BU-52766-08-08
-10	-10	-	1/2	-	BU-52764-10-10	BU-52765-10-10	BU-52766-10-10
-10	-12	-	5/8	-	BU-52764-10-12	BU-52765-10-12	BU-52766-10-12
-12	-12	-	5/8	-	BU-52764-12-12	BU-52765-12-12	BU-52766-12-12

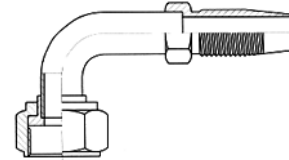
### ORFS female swivel, UNF thread



**51501**



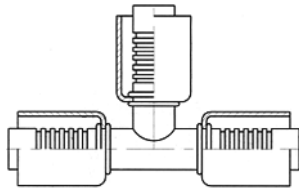
**51502**



**51503**

fitting connection size	hose dash	thread [inch]	hose I.D. [inch]	valve size	reusable	45° reusable	90° reusable
					code	code	code
-4	-4	9/16-18	3/16	-	BU-51501-04-04	BU-51502-04-04	BU-51503-04-04
-6	-6	11/16-16	5/16	-	BU-51501-06-06	BU-51502-06-06	BU-51503-06-06
-8	-8	13/16-16	13/32	-	BU-51501-08-08	BU-51502-08-08	BU-51503-08-08
-10	-10	1-14	1/2	-	BU-51501-10-10	BU-51502-10-10	BU-51503-10-10
-12	-12	1.3/16-12	5/8	-	BU-51501-12-12	BU-51502-12-12	BU-51503-12-12
-16	-16	1.7/16-12	7/8	-	BU-51501-16-16	BU-51502-16-16	BU-51503-16-16
-20	-20	1.11/16-12	1.1/8	-	BU-51501-20-20	BU-51502-20-20	BU-51503-20-20

### Tee



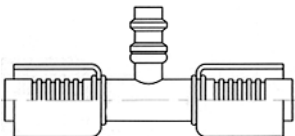
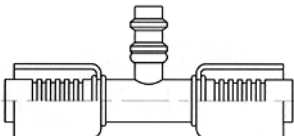
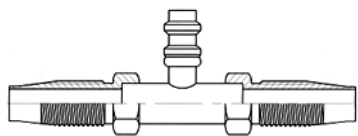
**7097**

hose dash	hose dash	hose I.D. [inch]	hose I.D. [inch]	valve size	crimping	crimping - LW hose	reusable
					code	code	code
-6	-6	5/16	5/16	-	BU-7097-06-06*	-	-
-8	-8	13/32	13/32	-	BU-7097-08-08*	-	-
-10	-10	1/2	1/2	-	BU-7097-10-10*	-	-
-12	-10	5/8 x 2	1/2	-	BU-7097-12-10*	-	-
-12	-10	5/8	5/8	-	BU-7097-12-12*	-	-

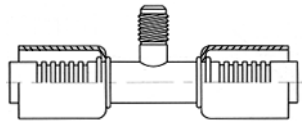
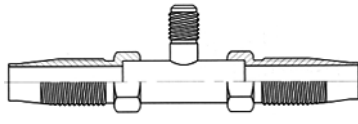
\* - for all steel version add „S” to the part code

# INDUSTRIAL HOSES - air-conditioning

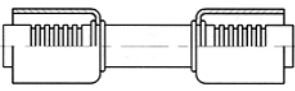
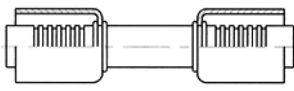
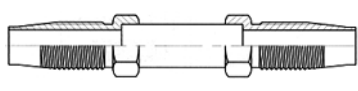
## Fittings for air-conditioning rubber hoses

In-line splicer, R134 valve							
							
<b>7024</b>		<b>8008</b>		<b>7031</b>			
hose dash 1	hose dash 2	hose I.D. 1 [inch]	hose I.D. 2 [inch]	valve size	crimping	crimping - LW hose	reusable
					code	code	code
-6	-6	5/16	5/16	16	BU-7024-06-06*	BU-8008-06-06*	BU-7031-06-06
-8	-8	13/32	13/32	16	BU-7024-08-08*	BU-8008-08-08*	BU-7031-08-08
-10	-10	1/2	1/2	13	BU-7024-10-10*	BU-8008-10-10*	BU-7031-10-10
-12	-12	5/8	5/8	13	BU-7024-12-12*	BU-8008-12-12*	BU-7031-12-12

\* - for all steel version add „S” to the part code

In-line splicer, R12 valve							
							
<b>7020 7023</b>		<b>7030 7025</b>					
hose dash 1	hose dash 2	hose I.D. 1 [inch]	hose I.D. 2 [inch]	valve size	crimping	crimping - LW hose	reusable
					code	code	code
-6	-6	5/16	5/16	3/16	BU-7020-06-06	-	BU-7030-06-06
-6	-6	5/16	13/32	1/4	BU-7023-06-06	-	BU-7025-06-06
-8	-8	13/32	13/32	3/16	BU-7020-08-08	-	BU-7030-08-08
-8	-8	13/32	1/2	1/4	BU-7023-08-08	-	BU-7025-08-08
-10	-10	1/2	1/2	1/4	BU-7020-10-10	-	BU-7025-10-10
-12	-12	5/8	5/8	1/4	BU-7020-12-12	-	BU-7025-12-12

\* - for all steel version add „S” to the part code

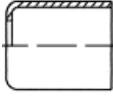
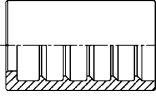
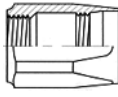
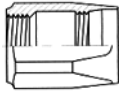
In-line splicer							
							
<b>7087</b>		<b>8007</b>		<b>7086</b>			
hose dash 1	hose dash 2	hose I.D. 1 [inch]	hose I.D. 2 [inch]	valve size	crimping	crimping - LW hose	reusable
					code	code	code
-6	-6	5/16	5/16	-	BU-7087-06-06*	BU-8007-06-06*	BU-7086-06-06
-6	-8	5/16	13/32	-	BU-7087-06-08*	BU-8007-06-08*	-
-8	-8	13/32	13/32	-	BU-7087-08-08*	BU-8007-08-08*	BU-7086-08-08
-8	-10	13/32	1/2	-	BU-7087-08-10	BU-8007-08-10*	-
-10	-10	1/2	1/2	-	BU-7087-10-10*	BU-8007-10-10*	BU-7086-10-10
-10	-12	1/2	5/8	-	BU-7087-10-12*	BU-8007-10-12*	-
-12	-12	5/8	5/8	-	BU-7087-12-12*	BU-8007-12-12*	BU-7086-12-12

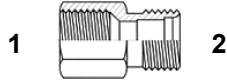
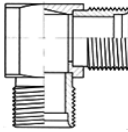
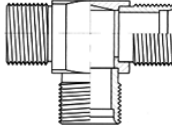
\* - for all steel version add „S” to the part code

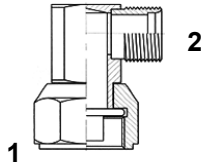
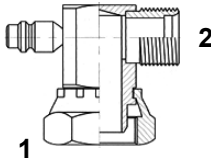
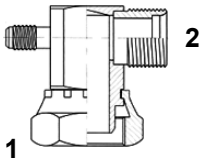


# INDUSTRIAL HOSES - air-conditioning

## Fittings for air-conditioning rubber hoses

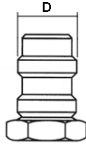



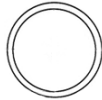
Ferrule					
					
<b>2051</b>		<b>2056</b>		<b>1052</b>	
					
<b>115</b>					
hose dash	hose ID [inch]	crimping 3055 hose code	crimping 3056 hose code	reusable 3055 hose code	reusable 3056 hose code
-4	3/16	-	BU-2056-04	-	BU-115-04
-6	5/16	BU-2051-06	-	BU-1052-06	BU-115-06
-8	13/32	BU-2051-08	-	BU-1052-08	BU-115-08
-10	1/2	BU-2051-10	-	BU-1052-10	BU-115-10
-12	5/8	BU-2051-12	-	BU-1052-12	BU-115-12
-16	7/8	-	BU-2056-16	-	BU-115-16
-20	1.1/8	-	BU-2056-20	-	BU-115-20
-24	1.3/8	-	-	-	BU-115-24

Female UNF SAE 45° / UNF male			Adapter 90° 2 x UNF male		Tee 3 x UNF male	
						
<b>7050</b>			<b>8020</b>		<b>8048</b>	
code	thread 1 [inch]	thread 2 [inch]	code	thread [inch]	code	thread [inch]
BU-7050-06-06	5/8-18	5/8-18	BU-8020-06-06	5/8-18	BU-8048-06-06	5/8-18
BU-7050-08-08	3/4-16	3/4-16	BU-8020-08-08	3/4-16	BU-8048-08-08	3/4-16
BU-7050-08-10	3/4-16	7/8-14	BU-8020-10-10	7/8-14	BU-8048-10-10	7/8-14
BU-7050-10-10	7/8-14	7/8-14	BU-8020-12-12	1.1/16-14	BU-8048-12-12	1.1/16-14

Adapter 90° UNF female / UNF male			90° UNF female/ UNF male with R134 valve			90° UNF female/ UNF male with R12 valve		
								
<b>7065</b>			<b>7066</b>			<b>7067</b>		
code	thread 1 [inch]	thread 2 [inch]	code	thread 1 [inch]	thread 2 [inch]	code	thread 1 [inch]	thread 2 [inch]
BU-7065-06-06	5/8-18	5/8-18	-	-	-	-	-	-
BU-7065-08-08	3/4-16	3/4-16	-	-	-	-	-	-
-	-	-	BU-7066-10-08	1-14	3/4-16	BU-7067-10-08	1-14	3/4-16
BU-7065-10-10	7/8-14	7/8-14	BU-7066-10-10	1-14	7/8-14	BU-7067-10-10	1-14	7/8-14

# INDUSTRIAL HOSES - air-conditioning

## Fittings for air-conditioning rubber hoses

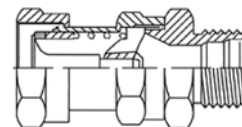
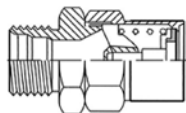
Retrofit adapter R12/R134A - protection caps - R134A valve					O-ring R12/R134A		
							
<b>7034/35/36</b>		<b>7037</b>	<b>7038</b>	<b>7039</b>	<b>7028</b>		
code	thread size [inch]	D [mm]	code	for adapter	code	O.D. [mm]	thickness [mm]
BU-7034	3/8-24	16	BU-7037	BU-7034-7036	BU-7028-06	7.65	1.78
BU-7035	7/16-20	13	BU-7038	BU-7035	BU-7028-08	10.82	1.78
BU-7036	7/16-20	16	BU-7039	BU-7035	BU-7028-10	14.00	1.78
-	-	-	-	-	BU-7028-12	17.17	1.78





## Quick release couplings for air-conditioning

**Material:** Zinc-plated steel  
**Seal:** CR (from -40°C up to +120°C)  
**Fluid loss:** 1.5 g/year  
**Max. vacuum:** 2 mm Hg  
**Safety factor:** 1:3 (static pressure)  
 1:2 (dynamic pressure)

Double shut-off, dry-break, screw-to-connect coupling designed for air-conditioning and refrigeration. Used for emptying and filling installations with fluid (refrigerant recharging). A socket has a special nut that allows panel mounting. Acceptable connection at residual pressure (static pressure left in the system when the drive is turned off). The coupling can be disconnected at maximum working pressure.



Socket	code	size	thread size	Plug	code	size	thread size
		BU-24421-06	1/4"		5/8"-18		BU-24422-06
	BU-24421-08	3/8"	3/4"-16		BU-24422-08	3/8"	3/4"-16
	BU-24421-10	1/2"	7/8"-14		BU-24422-10	1/2"	7/8"-14
	BU-24421-12	3/4"	1.1/16"-14		BU-24422-12	3/4"	1.1/16"-14

### Working parameters:

size	air inclusion / fluid loss (during connection and disconnection) [cm3]	working pressure [bar]		
		coupling connected	socket disconnected	plug disconnected
1/4"	0.02	330	175	35
3/8"	0.05	133	70	60
1/2"	0.1	183	183	50
3/4"	0.1	143	143	50