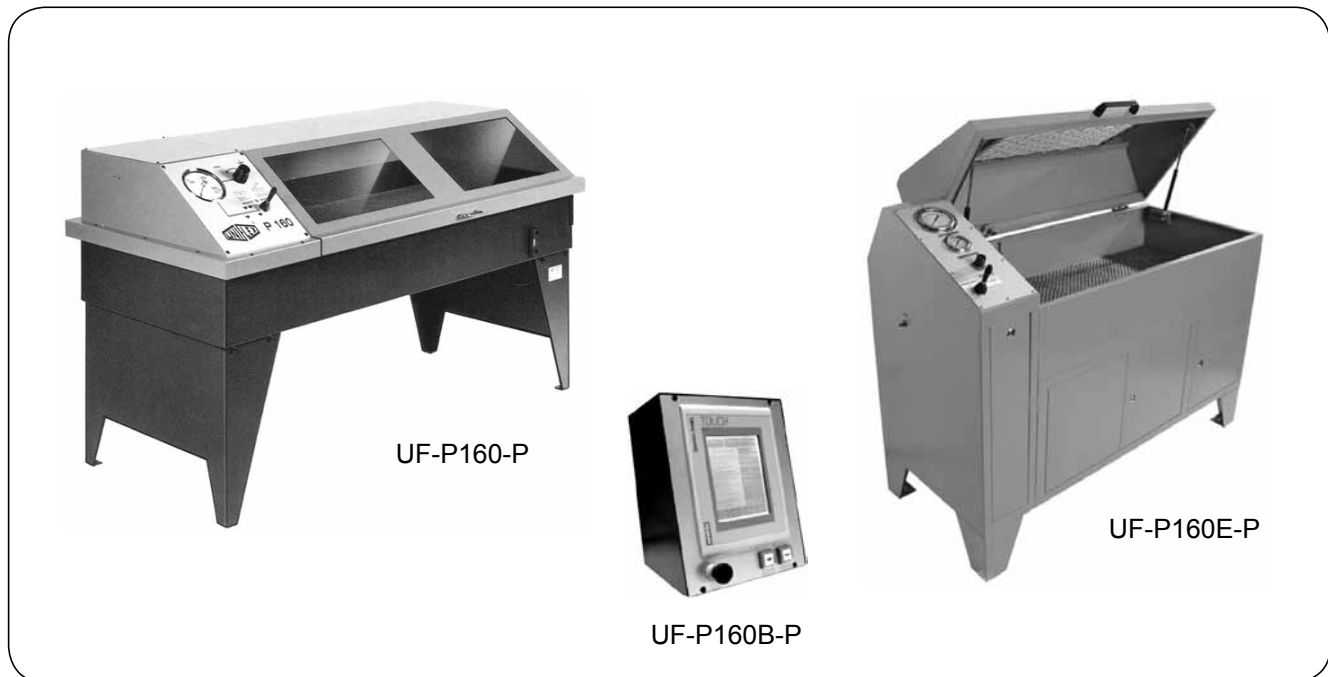


MACHINES AND ACCESSORIES - hose assembly production

Test benches for hydraulic assemblies testing P 110, P 160, P 160E



The test bench designed to test hydraulic hose assemblies with static pressure. The machine used in workshops allows to carry out a final inspection of the quality of manufactured assemblies.

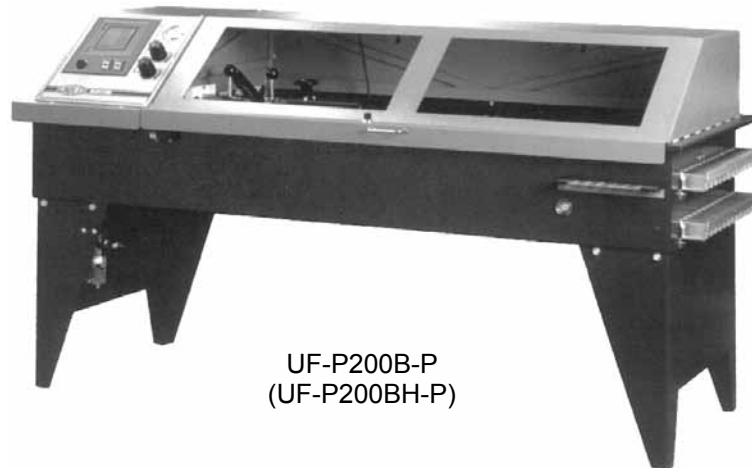
Characteristics:

- lockable testing tank with safety system consuming pressure when the tank is being opened,
- closed system tank of testing fluid with 100 l (P160), and 25 l (P160E),
- testing fluid: anticorrosive, safe and environment-friendly water-oil emulsion,
- testing capability: flexible assemblies (also in coils), rigid assemblies and other hydraulic components (valves, cylinders, etc.),
- assemblies that are to be tested are attached to the test benches using STECKO adapters,
- electronic control of P160B version enables printing out test reports, storing and data processing.

parameters	machine code		additional accessories and options	code
	UF-P160/P (UF-P160B/P)	UF-P160E/P		
test pressure [bar]	120 ÷ 1300		STECKO adapter set - metric (DN4 ÷ DN12)	UF-405901
drive	pneumatic-hydraulic intensifier		STECKO adapter set - imperial (1/4" ÷ 3/4")	UF-405902
flow [l/min]	1.1		anticorrosive additive 10 l	UF-EM10L
air operation	7 bar, 20 NI/min		filter (without filter cartridge)	UF-600901
testing tank dimensions [mm]	1590x795x370	1200x600x500	filter cartridge 5 µm	UF-6004
bench dimensions [mm]	2210x950x1325	1400x600x1200	filter cartridge 12 µm	UF-6005
weight (empty) [kg]	210		assembly cleaning unit (P 160)	UF-405903
standard accessories	service manual, suction filter 100 µm, air preparation unit		fast filling pump (P 160)	UF-405904
			low pressure testing 20 ÷ 120 bar (P 160)	UF-ND160

Machines UF-P160/P (UF-P160B/P), UF-P160E/P delivered with a set of adapters STECKO (UF-405901, UF-405902) and anti-corrosion fluid (UF-EM10L) as a standard.

Test benches for hydraulic assemblies testing P 200B, P 200BH

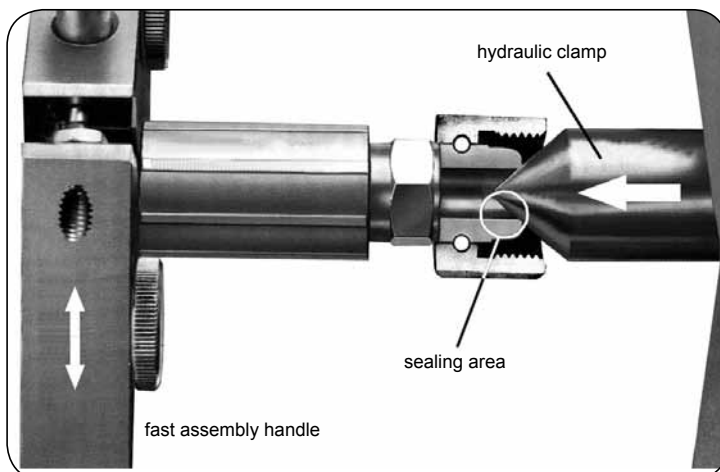


UF-P200B-P
(UF-P200BH-P)

The test bench designed for testing hydraulic hose assemblies with static pressure. The machine used in series production plants allows to carry out final inspection of the quality of manufactured assemblies.

Characteristics:

- lockable testing tank with safety system consuming pressure when the tank is being opened,
- closed system of testing fluid with 100 l reservoir capacity,
- testing fluid: anticorrosive, special water-oil emulsion, operation and environment friendly,
- testing capability: flexible assemblies (also in coils), rigid assemblies and other hydraulic components (valves, cylinders, etc.),
- assemblies to be tested are placed in the test chamber, clamped with the patented clamping system and sealed by a hydraulic clamp,
- testing procedure: automatic, with fast filling, venting and automatic emptying of the tested assembly,
- high testing performance: up to 1000 assemblies (DN12, L=800 mm) during 8 hour shift,
- electronic control enables printing out test reports, storing and data processing.



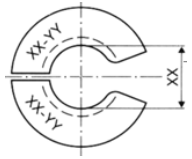

The principle of fast assembly mounting system

A hydraulic hose assembly is placed between two testing heads and clamped with fast mounting handles. The edge of a ferrule leans against a holding plate. The hydraulic system presses sealing cones against the internal edge of a fitting, ensuring perfect sealing of the tested assembly quickly and with no need to apply any screwed adapters.

MACHINES AND ACCESSORIES - hose assembly production

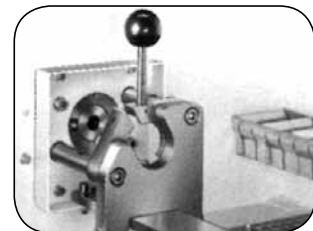
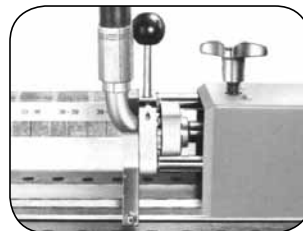
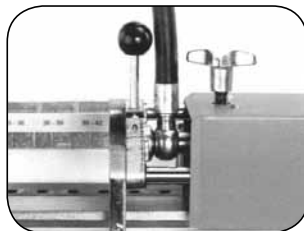
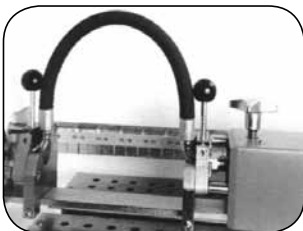
Test benches for hydraulic assemblies testing P 200B, P 200BH



parameters	machine code		additional options and accessories	code
	UF-P200B/P,	UF-P200BH/P		
test pressure [bar]	120 ÷ 1300	120 ÷ 3000		UF-HS400-..... 
drive	pneumatic-hydraulic intensifier		holding plate with clamping diameter XX from 8 to 42 mm (12 pcs.)	
flow [l/min]	1.1			
fast filling pump [l/min]	4.5			
air operation	7 bar, 20 NI/min		sealing cones (6 pcs.)	UF-DSP400-..... 
electric power supply	400 V, 0.38 kW		blind sealing cones (3 pcs)	UF-BDSP400-.....
testing tank dimensions [mm]	1590x795x370		sealing plate (120°)	UF-DS400-1
bench dimensions [mm]	2210x950x1325		low pressure testing 20 ÷ 120 bar	UF-ND200
weight (empty) [kg]	210		anti-corrosion liquid 10 l	UF-EM10L
standard accessories	service manual, suction filter 100 µm, air preparation unit			

Machines UF-P200B/P, UF-P200BH/P delivered with a set of holding plates (UF-HS400-...), sealing cones (UF-DSP400-..., UF-BDSP400-...), sealing plate (UF-DS400-1), and anti-corrosion fluid (UF-EM10L).

Examples of practical application of fast assembly system in P200B (P200BH) machine



MACHINES AND ACCESSORIES - hose assembly production

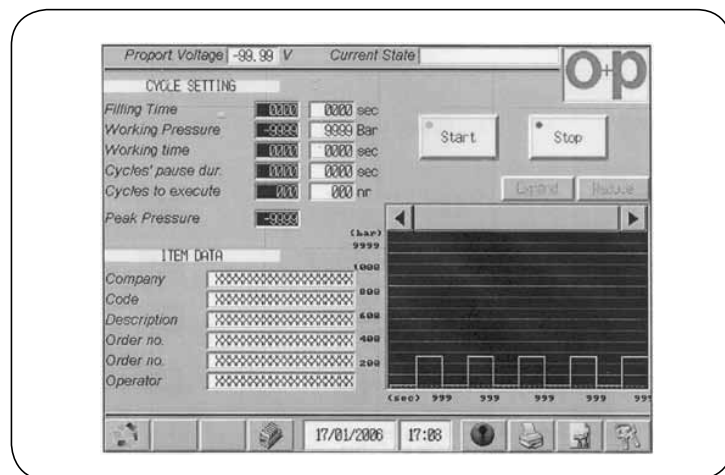
Test benches for hydraulic assemblies testing BC1200 ECO, BC1200 E, BC1200 EES



Test benches are designed to check hose assemblies, small actuators and other units of pressure hydraulics with static and pulsating pressure.

BC1200 ECO - a compact machine designed to test hose assemblies, manually controlled and pneumatically driven (no electronic elements). A porting block is equipped with a special quick release coupling that facilitates connection of a tested hose assembly in the small chamber of a machine.

BC1200E test bench - both ends of a tested hose assembly are attached to the porting blocks on the left wall of a test tank. Filling and testing processes are manual - by shifting the valves and pressure regulator. Pressure impulses are generated manually - by shifting the valve.



BC1200 EES test bench - equipped with two porting blocks, one is fixed and the other sliding so it can adjust to the length of a tested hose assembly. Filling and testing processes are automatic - according to a test program that is set on the touch pad (testing time and pressure; when tested with pulsating pressure: maximum pressure and time, pause time, number of cycles to go). Test reports can be printed out on a printer that can optionally be ordered with BC1200 EES test bench.

parameters	machine code		
	OP-BC1200 ECO	OP-BC1200 E	OP-BC1200 EES
test pressure [bar]	30 ÷ 1200	100 ÷ 1200	
drive	pneumatic intensifier	electric hydraulic pump, hydraulic intensifier 1:10	
operated by	-	400 V, 50 Hz, 3 phase	
test fluid	hydraulic oil		
oil tank capacity [l]	30	110	
pre-filling flow rate [l/min]	1.5	17	
control	manual	manual	electronic
testing procedure	manual	manual	automatic
number, dimension of connections	1 x 1/4" BSP	3 x 1/4" BSP	9 x 1/4" BSP
internal lightning	-	-	yes
test chamber dimensions [mm]	1200 x 550 x 250	2000 x 830 x 500	2000 x 830 x 300
machine dimensions [mm]	1500 x 600 x 1200	2500 x 875 x 1200	2500 x 955 x 1200
weight (without oil) [kg]	140	619	533