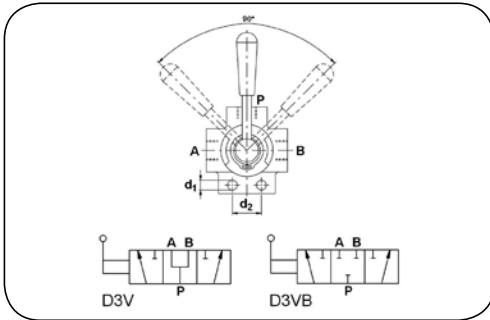


HIGH PRESSURE - valves

Hydraulic directional control valves



Hand switching valve D3V

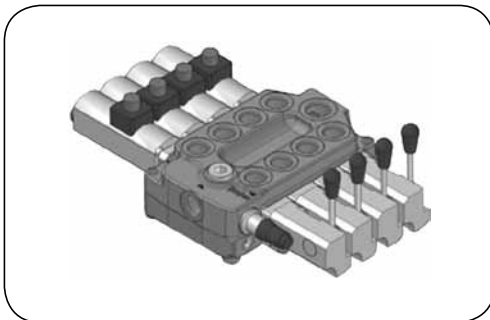
Material: Body - iron casting
Stem - hardened steel

Seal: NBR

Working temp.: From -20°C up to +90°C

Hand switching 3-way valve used in hydraulic systems to control fluid flow direction. Controlled by manual lever.

code	thread size [inch]	working pressure [bar]	flow rate [l/min]	D1 [mm]	D2 [mm]
DC-D3V-04	1/4	300	30	8.5	24
DC-D3V-06	3/8	250	35	8.5	24
DC-D3V-08	1/2	250	60	10.5	32
DC-D3V-12	3/4	250	100	10.5	32
DC-D3V-16	1	250	180	11	32
DC-D3VB-04	1/4	300	30	8.5	24
DC-D3VB-06	3/8	250	35	8.5	24
DC-D3VB-08	1/2	250	60	10.5	32
DC-D3VB-12	3/4	250	100	10.5	32
DC-D3VB-16	1	250	180	11	32



Directional control valves SALAMI

6-way, spool, directional control valves designed for hydraulic installations of cranes, hoists but also other construction, agricultural and industrial machines. They are used to control the fluid flow direction. There are two versions of the valves: sectional or monoblock (cast iron housing). The flow rate depends on a type and ranges from 45 to 180 l/min at maximum working pressure 350 bar. A single directional control valve can have up to 8 working sections.

type	version	nominal flow [l/min]	max. working pressure [bar]	number of working sections
VDM6	monoblock	45	350	7
VDM6A	monoblock	45	350	7
VDM09	monoblock	75	280	6
VDM8	monoblock	75	350	5
VD6A	sectional	45	350	8
VD8A	sectional	75	350	8
VD10A	sectional	120	280	8
VD12A	sectional	180	280	8

HIGH PRESSURE - valves

Hydraulic directional control valves



YFM35, YFM55 type

Material: Body - cast iron
Spools - hardened steel

Seal: NBR

Max. working press.: 315 bar

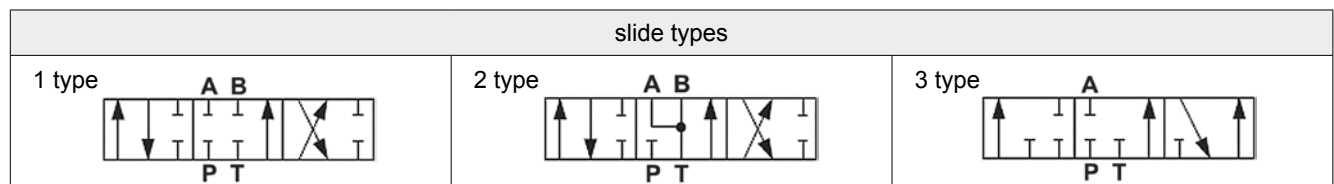
Max. return pressure: 25 bar

Working temp.: From -20°C up to +80°C

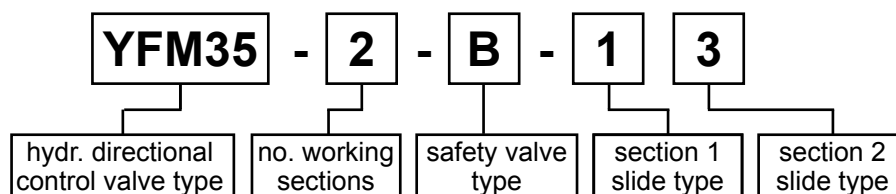
Monoblock spool directional control valve with a manual lever and centring springs. Designed for hydraulic systems used in cranes, hoists, construction, agricultural and industrial machines. Equipped with C type safety valve (set at 140 bar) and type 1 spool as a standard.

code	number of work. sections	safety valve type	nominal flow	connection port size		
				P (pump)	T (tank)	A, B (receiver)
YFM35 type						
TL-YFM35-1-C-1	1	C	45 l/min	3/8" BSP female thread	3/8" BSP female thread	3/8" BSP female thread
TL-YFM35-2-C-11	2					
TL-YFM35-3-C-111	3					
TL-YFM35-4-C-1111	4					
TL-YFM35-5-C-11111	5					
TL-YFM35-6-C-111111	6					
YFM55 type						
TL-YFM55-1-C-1	1	C	60 l/min	1/2" BSP female thread	1/2" BSP female thread	1/2" BSP female thread
TL-YFM55-2-C-11	2					
TL-YFM55-3-C-111	3					
TL-YFM55-4-C-1111	4					
TL-YFM55-5-C-11111	5					
TL-YFM55-6-C-111111	6					

safety valve types			
A type (without a valve)	B type (40 ÷ 80 bar)	C type (63 ÷ 200 bar)	D type (160 ÷ 315 bar)



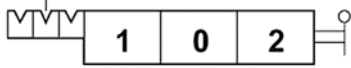
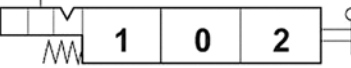
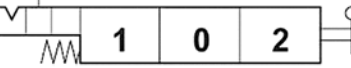
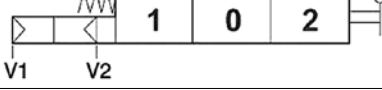
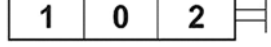
Code structure



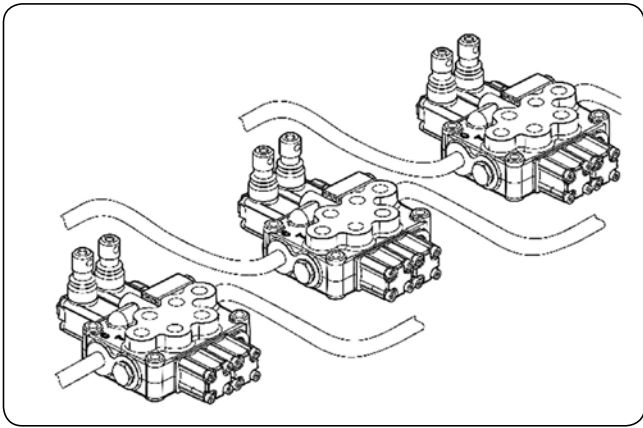
HIGH PRESSURE - valves

Hydraulic directional control valves

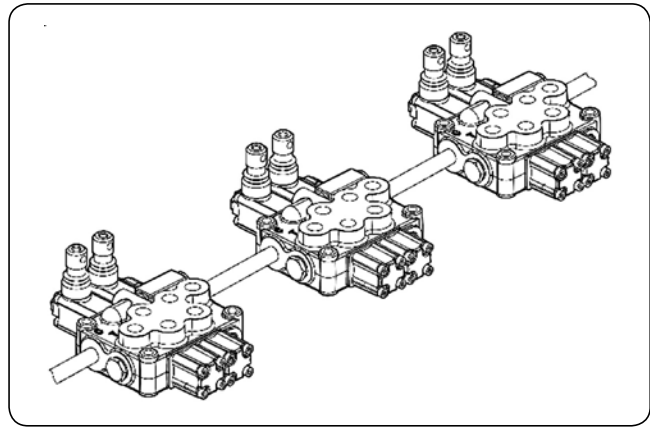
Other solutions - on request

type	description	hydraulic symbol
YFM35 YFM55	detent mechanism 3 positions spool control locked(1, 0, 2)	
YFM35 YFM55	detent mechanism 3 positions spool control locked (2)	
YFM35 YFM55	detent mechanism 3 positions spool control locked (1)	
YFM35 YFM55	pneumatic spool control min. 5.5 bar; max. 10 bar; 1/8" NPT	
YFM35 YFM55	remote control mechanism cable length from 1 to 6 meters	

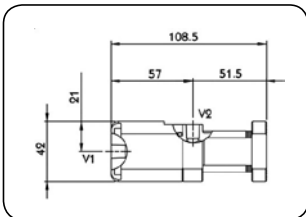
Power beyond - YFM35 and YFM55 directional control valves featuring an adapter. If installed inside the valve housing, the adapter allows to carry over the power beyond the circuit. In other words, the adapter blocks a direct connection between a pressure channel (P) and a tank channel (T). So as a result, unused hydraulic fluid under pressure gets directed to other parts of hydraulic system in order to supply other elements.



regular operation mode



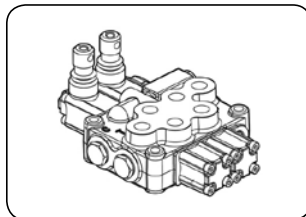
operation with power beyond function



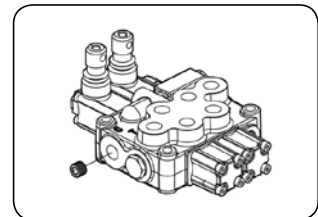
pneumatic control



remote control



regular operation mode



operation with power beyond function

HIGH PRESSURE - valves

Hydraulic directional control valves



YE45 type

Material: Body - iron cast
Spools - hardened steel

Seal: NBR

Max. working press.: 250 bar

Max. return pressure: 25 bar

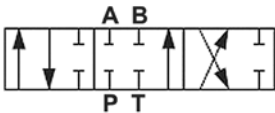
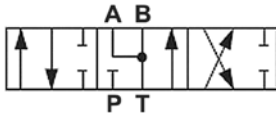
Control voltage: 12 V DC

Working temp.: From -20°C up to +80°C

Monoblock spool directional control valve with electrically controlled centring springs. Designed for hydraulic systems used in cranes, hoists, construction, agricultural and industrial machines. Equipped with C type safety valve (set at 140 bar) and type 1 spools.

code	number of work. sections	safety valve type	nominal flow	connection port size		
				P (pump)	T (tank)	A, B (receiver)
TL-YE45-1-C-1	1	C	45 l/min	3/8" BSP female thread	3/8" BSP female thread	3/8" BSP female thread
TL-YE45-2-C-11	2					
TL-YE45-3-C-111	3					
TL-YE45-4-C-1111	4					
TL-YE45-5-C-11111	5					
TL-YE45-6-C-111111	6					

safety valve types			
A type (without valve)	B type (40 ÷ 80 bar)	C type (63 ÷ 200 bar)	D type (160 ÷ 315 bar)

slide types	
1 type 	2 type 

code structure

