

HIGH PRESSURE - pumps

Flange connectors

Material: Zinc-plated steel (standard), AISI 316L steel (option)

Working temp.: From -20°C up to +100°C (NBR seal), from -20°C up to +200°C (Viton seal)

Compact flange connectors with square flange heads, bolt circle diameter from 26 mm up to 72.5 mm with metric and BSP threads used to connect hydraulic pumps. Equipped with a set of bolts, washers and O-rings as a standard.

Flange connector with 4 bolt holes / DIN 2353					
press. [bar]	code	bolt circle diameter [mm]	pipe O.D [mm]	thread size [mm]	bolt size [mm]
315	HK-A-35-10L	35	10	16x1.5	4xM6
	HK-A-35-12L		12	18x1.5	
250	HK-A-35-15L		15	22x1.5	
315	HK-A-35-16S		16	24x1.5	
100	HK-A-40-15L	40	15	22x1.5	
	HK-A-40-18L		18	26x1.5	
250	HK-A-40-20S		20	30x2	
100	HK-A-40-22L		22	30x2	
	HK-A-40-28L	28	36x2		
250	HK-A-55-20S	55	20	30x2	4xM8
	HK-A-55-25S		25	36x2	
	HK-A-55-30S		30	42x2	
100	HK-A-55-35L		35	45x2	

Flange connector with 4 bolt holes / DIN 2353					
press. [bar]	code	bolt circle diameter [mm]	pipe O.D [mm]	thread size [mm]	bolt size [mm]
315	HK-A-90-35-10L	35	10	16x1.5	4xM6
	HK-A-90-35-12L		12	18x1.5	
250	HK-A-90-35-15L		15	22x1.5	
315	HK-A-90-35-16S		16	24x1.5	
100	HK-A-90-40-15L	40	15	22x1.5	
	HK-A-90-40-18L		18	26x1.5	
250	HK-A-90-40-20S		20	30x2	
100	HK-A-90-40-22L		22	30x2	
	HK-A-90-40-28L	28	36x2		
250	HK-A-90-55-20S	55	20	30x2	4xM8
	HK-A-90-55-25S		25	36x2	
	HK-A-90-55-30S		30	42x2	
100	HK-A-90-55-35L		35	45x2	
250	HK-A-90-55-38S	38	52x2		
100	HK-A-90-55-42L	42	52x2		

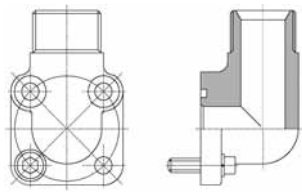
Square flange connector with 4 bolt holes / BSP male thread 60°				
press. [bar]	code	bolt circle diameter [mm]	thread size [inch]	bolt size [mm]
250	HK-A-BZ-30-08	30	1/2	4xM6
	HK-A-BZ-40-12	40	3/4	4xM8
	HK-A-BZ-51-16	51	1	4xM10
	HK-A-BZ-56-16	56	1	

Square flange connector with 4 bolt holes / BSP female thread				
press. [bar]	code	bolt circle diameter [mm]	thread size [inch]	bolt size [mm]
250	HK-A-BW-30-08	30	3/8	4xM6
	HK-A-BW-40-12	40	1/2	4xM8
	HK-A-BW-51-16	51	3/4	4xM10
	HK-A-BW-56-16	56	3/4	

HIGH PRESSURE - pumps

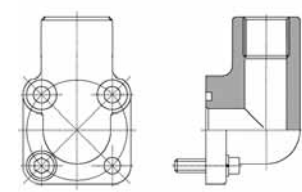
Flange connectors

90° flange connector with 4 bolt holes / BSP male thread 60°



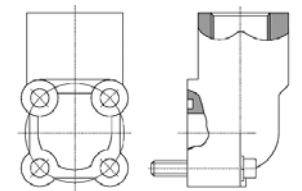
press. [bar]	code	bolt circle diameter [mm]	thread size [inch]	bolt size [mm]	
315	HK-A-BZ-90-35-06	35	3/8	4xM6	
	HK-A-BZ-90-35-08		1/2		
	HK-A-BZ-90-35-12		3/4		
250	HK-A-BZ-90-40-06	40	3/8		
	HK-A-BZ-90-40-08		1/2		
	HK-A-BZ-90-40-12		3/4		
	HK-A-BZ-90-40-16		1		
315	HK-A-BZ-90-55-08	55	1/2		4xM8
	HK-A-BZ-90-55-12		3/4		
	HK-A-BZ-90-55-16		1		

90° flange connector with 4 bolt holes / BSP female thread



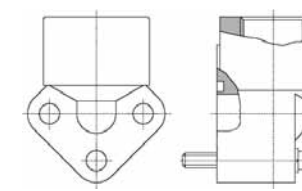
press. [bar]	code	bolt circle diameter [mm]	thread size [inch]	bolt size [mm]
315	HK-A-BW-90-35-06	35	3/8	4xM6
	HK-A-BW-90-35-08		1/2	
250	HK-A-BW-90-40-06	40	3/8	
	HK-A-BW-90-40-08		1/2	
	HK-A-BW-90-40-12		3/4	
315	HK-A-BW-90-55-08	55	1/2	
	HK-A-BW-90-55-12		3/4	
	HK-A-BW-90-55-16		1	

90° flange connector with 4 bolt holes / BSP female (aluminium)



press. [bar]	code	bolt circle diameter [mm]	thread size [inch]	bolt size [mm]
180	HK-A-BW-90-30-06-AL	30	3/8	4xM6
	HK-A-BW-90-30-08-AL		1/2	
	HK-A-BW-90-35-06-AL	35	3/8	
	HK-A-BW-90-35-08-AL		1/2	
	HK-A-BW-90-40-08-AL	40	1/2	3xM8
	HK-A-BW-90-40-12-AL		3/4	
	HK-A-BW-90-55-12-AL	55	3/4	4xM8
	HK-A-BW-90-55-16-AL		1	

90° flange connector with 3 bolt holes / BSP female (aluminium)

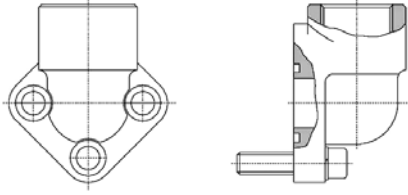


press. [bar]	code	bolt circle diameter [mm]	thread size [inch]	bolt size [mm]
180	HK-B-BW-90-26-06-AL	26	3/8	3xM5
	HK-B-BW-90-26-08-AL		1/2	
	HK-B-BW-90-30-06-AL	30	3/8	3xM6
	HK-B-BW-90-30-08-AL		1/2	
	HK-B-BW-90-40-08-AL	40	1/2	3xM8
	HK-B-BW-90-40-12-AL		3/4	
	HK-B-BW-90-51-12-AL	51	3/4	3xM10
	HK-B-BW-90-51-16-AL		1	

HIGH PRESSURE - pumps

Flange connectors

90° flange connector with 3 bolt holes / BSP female thread



press. [bar]	code	bolt circle diameter [mm]	thread size [inch]	bolt size [mm]
300	HK-B-BW-90-26-06	26	3/8	3xM5
	HK-B-BW-90-26-08		1/2	
	HK-B-BW-90-30-06	30	3/8	3xM6
	HK-B-BW-90-30-08		1/2	
	HK-B-BW-90-40-08	40	1/2	3xM8
	HK-B-BW-90-40-12		3/4	
	HK-B-BW-90-51-12	51	3/4	3xM10
	HK-B-BW-90-51-16		1	
	HK-B-BW-90-56-12	56	3/4	
	HK-B-BW-90-56-16		1	
	HK-B-BW-90-62-16	62	1	3xM12
	HK-B-BW-90-62-20		1.1/4	
	HK-B-BW-90-72-20	72.5	1.1/4	
	HK-B-BW-90-72-24		1.1/2	

