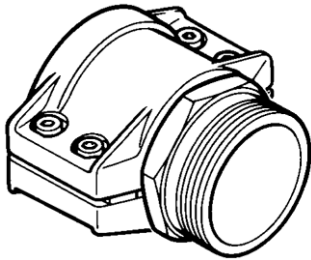
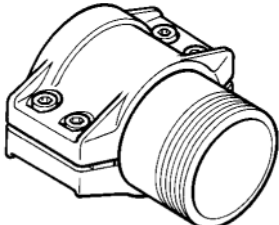
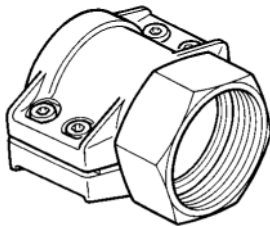
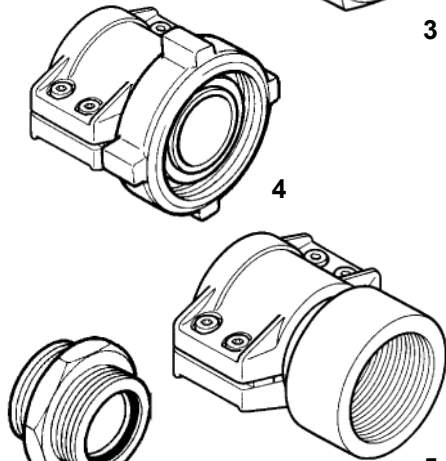
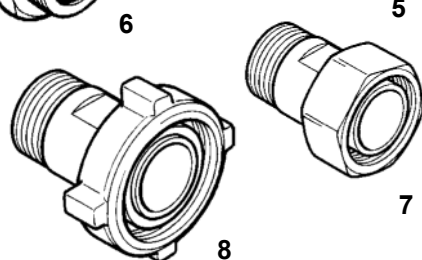


# INDUSTRIAL FITTINGS - couplings

## Threaded couplings for liquid gas (LPG)

**Coupling material:** St (carbon steel), Ms (brass)  
**Seal:** NBR (only for position 6)  
**Working pressure:** 25 bar

A complete hose coupling with an aluminium safety clamp and male or female thread. Adapters with male thread at both ends or with male thread and female thread with a swivel nut.  
 DN - hose inside diameter x hose wall thickness.

picture	code	DN / thread	thread	material	weight [kg]	pic.	
	RS-320135050310	13x5	1/2" NPT	St	0.18	1	
	RS-320196075310	19x6	3/4" NPT	St	0.24	1	
	RS-320196100310		1" NPT	St	0.31	1	
	RS-320256100310	25x6	1" NPT	St	0.33	1	
	RS-320256125310		1.1/4" NPT	St	0.39	1	
	RS-320326100310	32x6	1" NPT	St	0.35	1	
	RS-320326125310		1.1/4" NPT	St	0.39	1	
	RS-320326150310		1.1/2" NPT	St	0.38	1	
	RS-320387150310	38x6.5	1.1/2" NPT	St	0.42	1	
	RS-320508125310	50x8	1.1/4" NPT	St	0.60	1	
	RS-320508200310		2" NPT	St	0.70	1	
	RS-320758200310	75x8	2" NPT	St	1.60	1	
	RS-320758300310		3" NPT	St	1.95	2	
		RS-120135050310	13x5	1/2" NPT	St	0.20	3
		RS-120135175013		1.3/4" ACME	St/Ms	0.36	3
		RS-120196075310	19x6	3/4" NPT	St	0.26	3
RS-120196100310		1" NPT		St	0.35	3	
RS-120196175013		1.3/4" ACME		St/Ms	0.41	3	
RS-120256100310		25x6	1" NPT	St	0.37	3	
RS-120256175013			1.3/4" ACME	St/Ms	0.42	3	
RS-120326100310		32x6	1" NPT	St	0.40	3	
RS-120326125310			1.1/4" NPT	St	0.45	3	
RS-120326175013			1.3/4" ACME	St/Ms	0.46	3	
RS-120326225013			2.1/4" ACME	St/Ms	0.73	4	
RS-120387150310		38x6.5	1.1/2" NPT	St	0.47	3	
RS-120387225013			2.1/4" ACME	St/Ms	0.78	4	
		RS-120508125310	50x8	1.1/4" NPT	St	0.83	3
		RS-120508200310		2" NPT	St	0.83	3
		RS-120508325013		3.1/4" ACME	St/Ms	1.65	4
	RS-120758300310	75x8	3" NPT	St	1.75	5	
	RS-120758325013		3.1/4" ACME	St/Ms	2.85	4	
	RS-410175175010	1.3/4" ACME	1.3/4" ACME	St	0.20	6	
	RS-410225225010	2.1/4" ACME	2.1/4" ACME	St	0.51	6	
	RS-410325325010	3.1/4" ACME	3.1/4" ACME	St	1.40	6	
	RS-160175100031	1.3/4" ACME	1" NPT	St/Ms	0.37	7	
	RS-160225125031	2.1/4" ACME	1.1/4" NPT	St/Ms	0.78	8	
	RS-160325200031	3.1/4" ACME	2" NPT	St/Ms	1.60	8	
	RS-160325200031	3.1/4" ACME	2" NPT	St/Ms	1.60	8	

# INDUSTRIAL FITTINGS - couplings

## Threaded couplings for cryogenic gases - EIGA



**Material:** SS (AISI 303 / AISI 304)  
Ms - brass

**Seal:** PTFE

**Connections:** Female thread, welding neck, flanged connection

**Working temp.:** Down to -196°C

### Operation

EIGA coupling halves are secured together when a coupler (hose unit) connects with an adapter (tank unit). Female thread Tr 90x8 (coupler) is then connected with male thread Tr 89x8 (adapter). The coupler consists of a swivel nut set on a pipe stub with the use of a ball bearing. The pipe stub can either have 2.1/2" female thread or 76.1 x 8 mm welding neck at its end.

### Application

Loading and unloading of cryogenic liquefied gases such as CO<sub>2</sub>, N<sub>2</sub>, Ar, O<sub>2</sub> and a few other. The couplings are specific for each type of gas - they are coded using slots of special dimension on the coupler which mate only with pins on the corresponding adapter. This code systems prevents connecting the coupler of one gas e.g. oxygen with the adapter of the other e.g. nitrogen.

### Standard

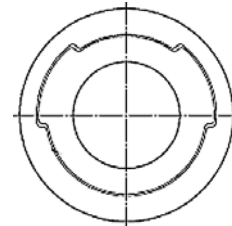
EIGA - EUROPEAN INDUSTRIAL GASES ASSOCIATION. EIGA couplings are manufactured according to EIGA 909/03/E standard (EIGA CRYOGENIC GASES COUPLINGS FOR TANKER FILLING) and meet the requirements of EN 13371.



adapter - tank unit



coupler - hose unit




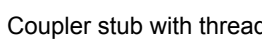






nut code example (N<sub>2</sub>)

picture	code	connection	working press. [bar]	medium	material	seal
	EV-830104070064	flange DN65/PN40	40	CO <sub>2</sub>	Ms	PTFE
	EV-830104070061			N <sub>2</sub>		
	EV-830104070062			Ar		
	EV-830104070063			O <sub>2</sub>		
	EV-830004070064			CO <sub>2</sub>	SS	
	EV-830004070061			N <sub>2</sub>		
	EV-830004070062			Ar		
	EV-830004070063			O <sub>2</sub>		
	EV-110102000003	welding end 76.1x8 mm	40	CO <sub>2</sub>	SS	-
	EV-110102000000			N <sub>2</sub>		
	EV-110102000001			Ar		
	EV-110102000002			O <sub>2</sub>		
	EV-120000060016	-	40	CO <sub>2</sub> , N <sub>2</sub> , Ar, O <sub>2</sub>	PTFE	-
	EV-110106000000	-	-	-	SS	-
	EV-110206000000				PA 6	
	EV-110006000011				Ms	

# INDUSTRIAL FITTINGS - couplings

## Threaded couplings for cryogenic gases - EIGA

picture	code	connection	work. press. [bar]	medium	material	seal
	EV-830103052065	2.1/2" BSP female thread	40	CO <sub>2</sub>	Ms	
	EV-830103049065			N <sub>2</sub>		
	EV-830103050065			Ar		
	EV-830103051065			O <sub>2</sub>		
	EV-830003052065	2.1/2" BSP female thread	40	CO <sub>2</sub>	SS	
	EV-830003049065			N <sub>2</sub>		
	EV-830003050065			Ar		
	EV-830003051065			O <sub>2</sub>		
	EV-830003052089	welding end 76.1x8 mm	40	CO <sub>2</sub>	SS	
	EV-830003049089			N <sub>2</sub>		
	EV-830003050089			Ar		
	EV-830003051089			O <sub>2</sub>		
	EV-120000000003	-	40	CO <sub>2</sub>	Ms	
	EV-120000000000			N <sub>2</sub>		
	EV-120000000001			Ar		
	EV-120000000002			O <sub>2</sub>	SS	
	EV-110100000003			CO <sub>2</sub>		
	EV-110100000000			N <sub>2</sub>		
	EV-110100000001			Ar		
	EV-110100000002			O <sub>2</sub>		
				EV-120000000012		2.1/2" BSP female thread
EV-110111000003		N <sub>2</sub> Ar O <sub>2</sub>	SS			
	EV-110111000000	welding end 76.1x8 mm	40	CO <sub>2</sub> N <sub>2</sub> Ar O <sub>2</sub>	SS	
	EV-110207000000	-	-	-	PA 6	
	EV-120000000135				Ms	
	EV-120000000048	-	-	CO <sub>2</sub> N <sub>2</sub> Ar O <sub>2</sub>	SS	
	EV-120000000031	-	-	-	Ms	

# INDUSTRIAL FITTINGS - couplings

## Threaded couplings for cryogenic gases - LPG



**Material:** SS (AISI 304 steel)  
Ms (brass)

**Seal:** PTFE

**Connections:** Weld-in neck, (option - flange connection)

**Working temp.:** Down to -196°C

**Working press.:** Up to 12 bar

### Operation:

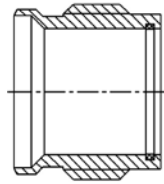
Threaded couplings for application in LNG installations. A coupler (hose unit) connects with an adapter (tank unit) by thread Tr 80x8. The coupler consists of a swivel nut set on a pipe stub. The pipe stub has a welding neck as a standard. The couplings are also available with flange connections.

### Application:

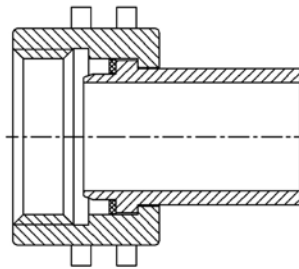
Loading and unloading of LNG (Liquefied Natural Gas) and other liquefied technical gases.

### Standard:

Manufactured according to the producer's standard.



adapter - tank unit



coupler - hose unit

picture	code	description	picture	code	description
	EV-LNG-W-065-SS	Adapter with welding neck 76.1x2.9 mm and seal. Material: AISI 304.		EV-LNG-G-065-SS	Coupler with welding neck 63x6.5 mm and seal. Material: AISI 304.
	EV-LNG-Z-Ms	Adapter cap. Material: brass.		EV-LNG-K-Al	Coupler plug. Material: aluminium.
-	EV-LNG-UW	Adapter seal.	-	EV-LNG-UG	Coupler seal.
-	-	-	-	EV-LNG-KL	Wrench for nut.